



The DCMI Metadata Registry

Registry Working Group Meeting

<http://dublincore.org/dcregistry/>

DC-2003

Supporting Communities of
Discourse and Practice
Seattle, Washington

Harry Wagner

September 2003

OCLC Office of Research

Dublin Core Metadata Initiative



Agenda

- Working group overview
- Prior year activities & current status
- Discussion of current activity:
 - Centralized -> distributed architecture
 - Definition & objectives
 - Expected benefits of deploying a registry
 - Account of currently deployed sites
- Demonstrate Registry
 - User interface
 - Application / registry interface
 - Administration module
- Proposed new charter
- Open issues discussion



Working Group Overview

- Established December 1999
- Chairs:
 - Rachel Heery, UKOLN
 - Harry Wagner, OCLC
- Mission:
 - Authoritative source of in-depth information about the DCMI vocabulary and the relationship between terms in that vocabulary
 - Format suitable for both humans and applications
- Consensus-driven activity involving the interests of a variety of participants, working and interest groups and related activities
- WG home page: <http://dublincore.org/groups/registry/>



Prior Year Activity & Current Status

Prior Year Activity

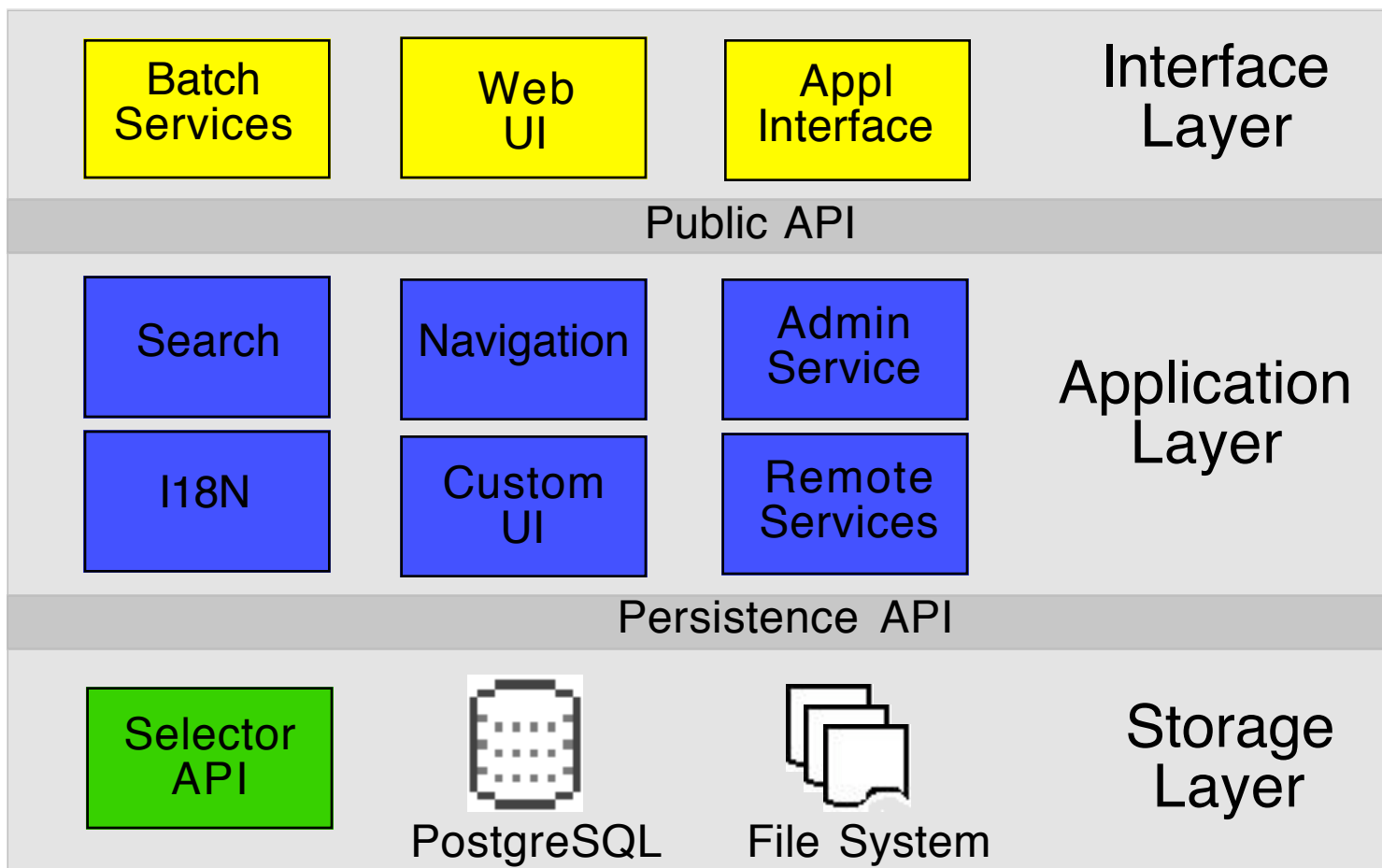
- Application interface
 - Web services architecture
 - WSDL compliant
 - WSIL implemented for service discovery
- Administration module
 - Import & manage metadata resources
 - Organize resources into collections
 - Administer inter-registry communication
- Extensibility features

Current Status

- Current charter fulfilled
- Architecture evolving: centralized -> distributed

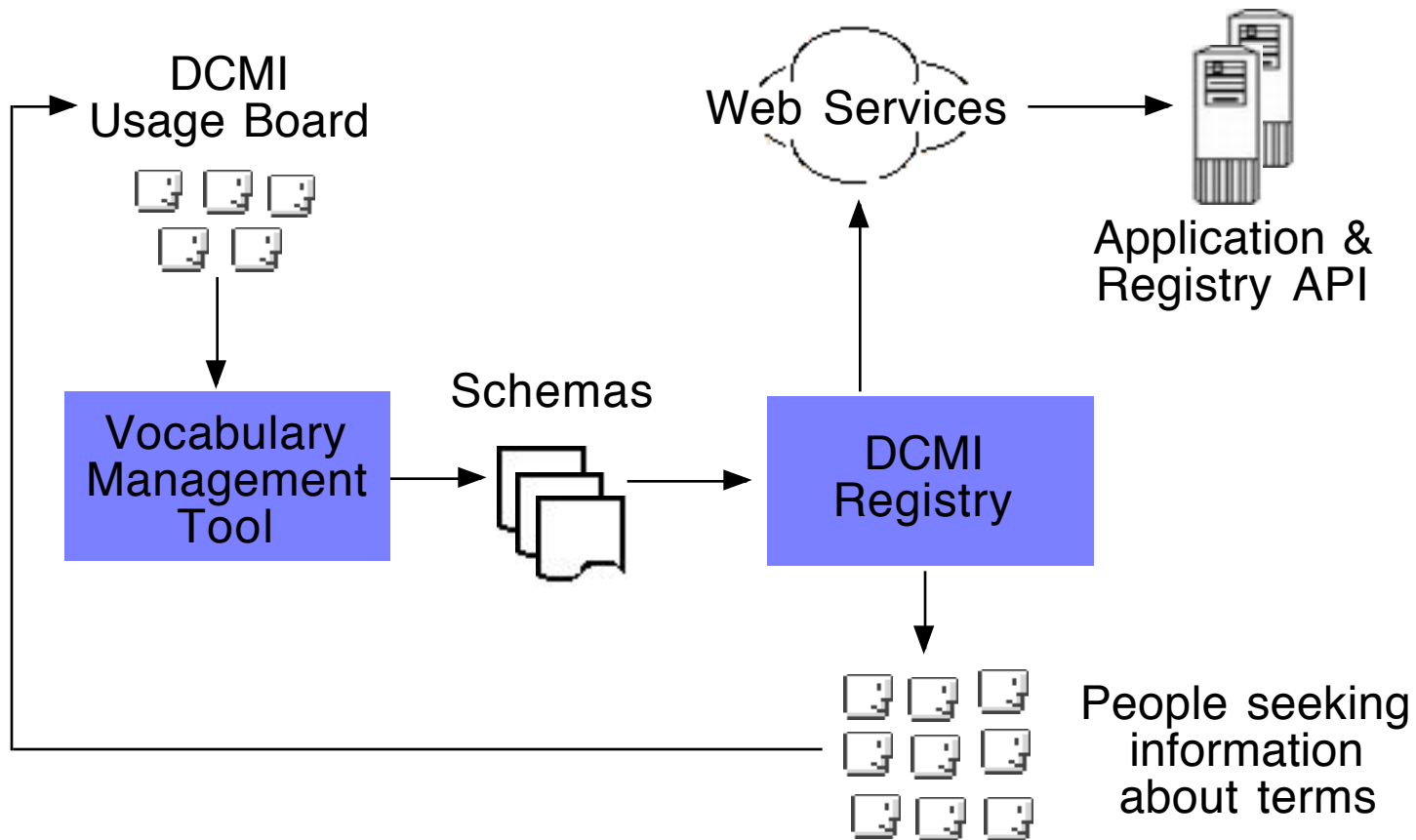


Registry Architecture





Centralized Registry Model



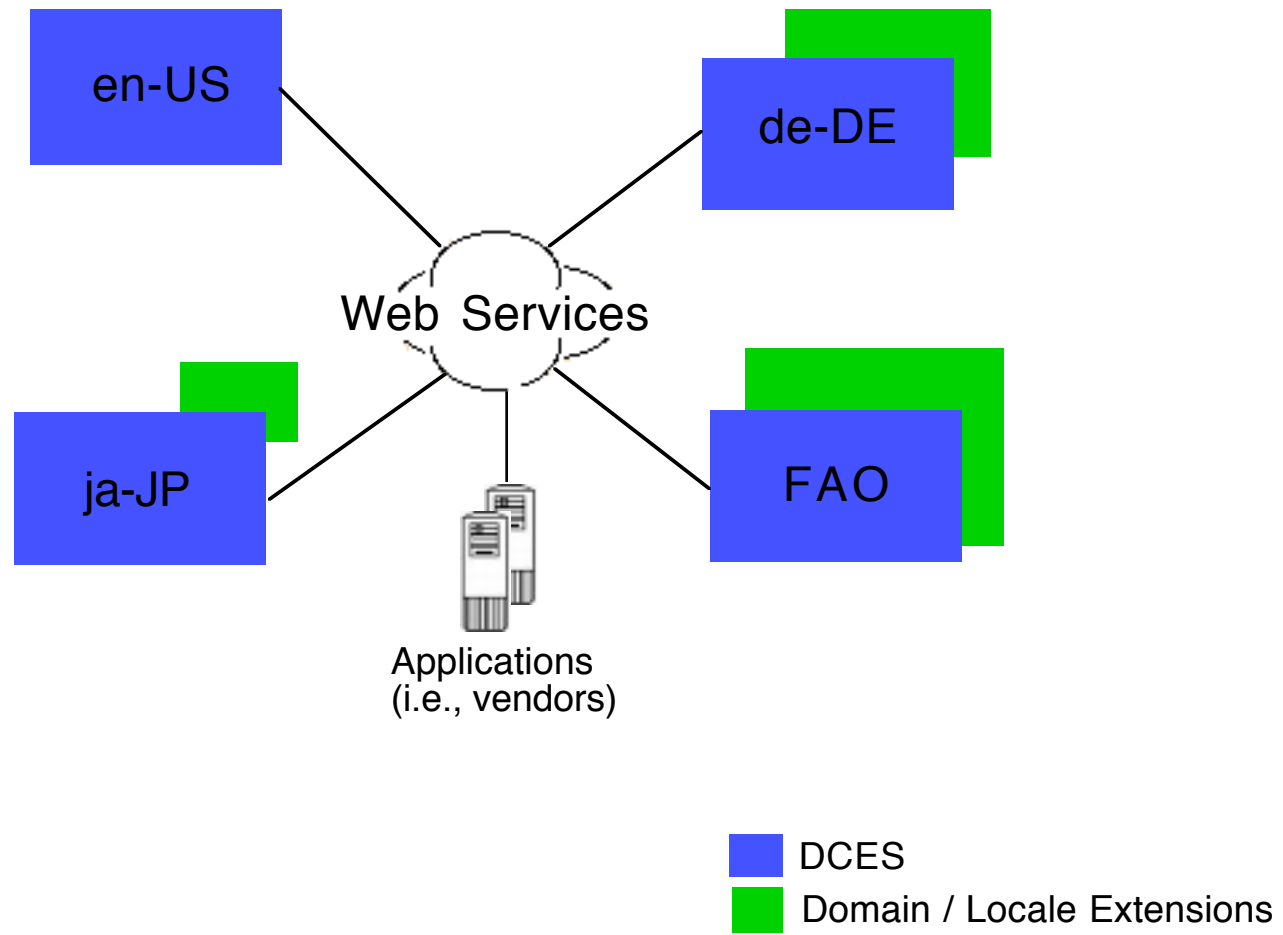


Definition & Objectives

- Open-source project, based on current registry model
- Provides enhanced and authoritative access to information that is important to diverse communities of practice
- Enables access to locale / domain-specific terms, extensions, application profiles, documents, classification schemes, etc.
- Cooperation with broader DCMI community is provided with application API that supports discovery and exchange of metadata
- “Plans for a distributed registry of Dublin Core in multiple languages”
<http://dublincore.org/documents/1998/10/28/distributed-registry/>

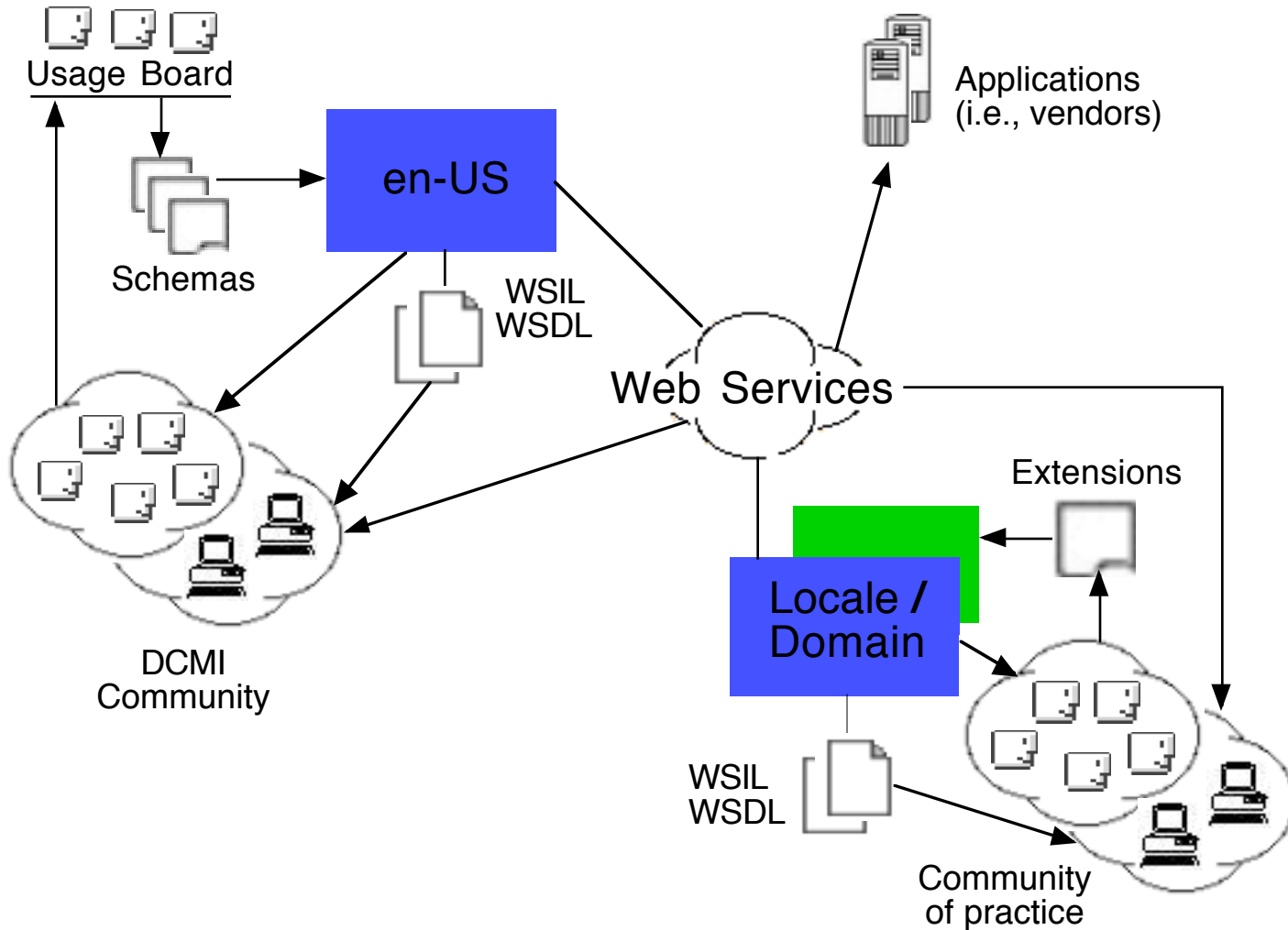


Distributed Registry Model Overview





Distributed Registry Model





Centralized vs. Distributed

Centralized Registry

- Authoritative source of information
- Enhanced access to information about resources
- User base: entire DCMI community
- Generic terms: DCMI core
- Broad value to the entire metadata community
- Finite value to specific communities of practice
- Administered by DCMI Usage Board
- All known translations supported

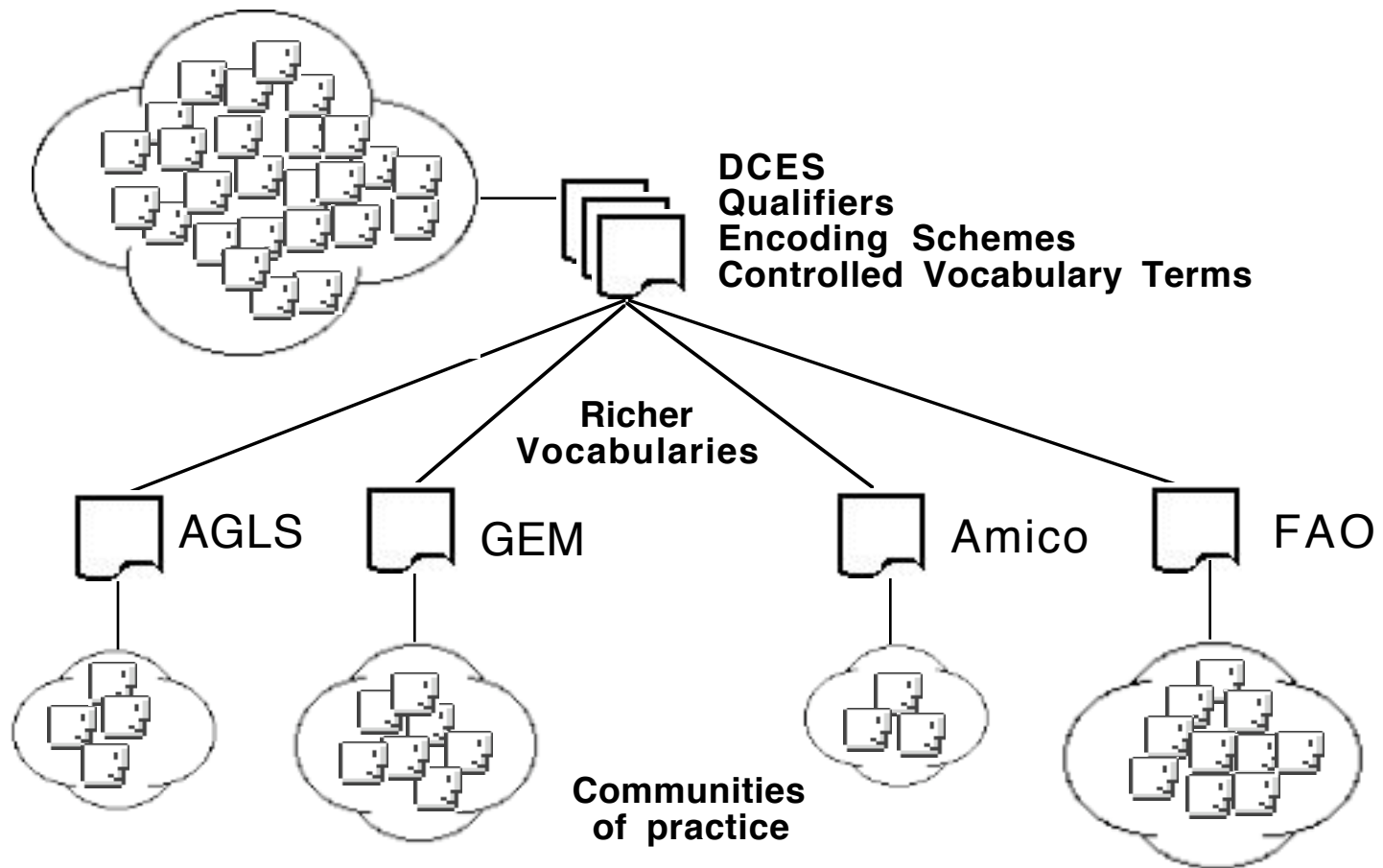
VS

Distributed Registry

- Authoritative source of information
- Enhanced access to information about resources
- User base: one distinct community
- DCMI core and locale / domain extensions
- Narrow value to the entire metadata community
- Precise value to a specific community of practice
- Administered by the community it serves
- Translations supported are those appropriate for that community

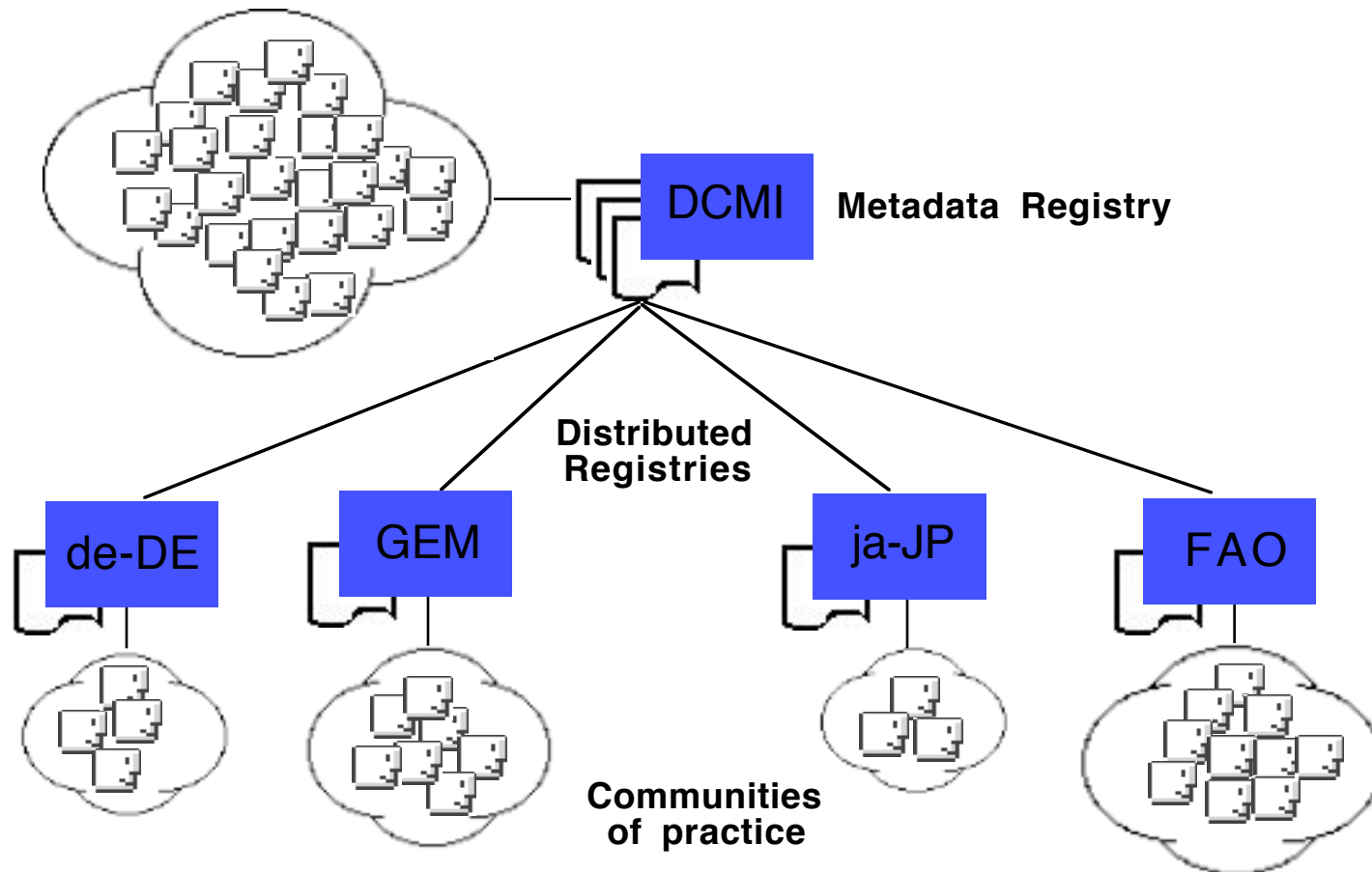


Who Does it Benefit?





How Do They Benefit?





What Are The Benefits?

- Authoritative source of information
 - Current and trusted information
- In-depth information about metadata
 - Relationships between terms
 - Vocabulary classification schemes
- Extensibility
 - Terms, application profiles, documents, etc.
 - Add new application services
- Metadata reuse & inter-registry cooperation
 - Discovery is key to reuse
- Internationalization
 - Registry designed as an i18n application
 - i18n tools are integral part of application
- Best practice
 - Interaction promotes best practice
- Affiliate program



Deployed Sites

- OCLC: Dublin, Ohio
 - <http://dublincore.org/dcregistry/index.html>
 - 23 languages
 - DC core terms
- ULIS: Tsukuba, Japan
 - <http://fiord.ulis.ac.jp/dcregistry/index.html>
 - CJK&E
 - Transcription term, Nippon cataloging rules, national diet metadata set
- University of Goettingen: Goettingen, Germany
 - <http://dbc.clear.sub.uni-goettingen.de/dcregistry/index.html>
 - German & English
 - SSGFI metadata terms
- UKOLN: Bath, England
 - <http://solo.ukoln.ac.uk/dcregistry/index.html>
 - English & French
 - RDN terms, RDN-OAI application profile



Open Issues / Challenges

- How to most effectively provide access to non-RDF information (i.e., application profiles)
- If and how to manage access to prior (historical) versions of terms, both at the item level and at the collection level
- How to manage different translation versions
- Level-of and style of cooperation between registries
- How to manage 'canonical' version of a term
- Managing provenance information in a distributed environment
- Enhancements needed to make application easier to install and extend



Conclusion

Metadata registry:

<http://dublincore.org/dcregistry/>

WG home page:

<http://dublincore.org/groups/registry/>

Mailing list:

<http://www.jiscmail.ac.uk/lists/DC-REGISTRY.html>

Prototypes & source:

<http://wip.dublincore.org/>

Harry Wagner

OCLC Office of Research

Dublin Core Metadata Initiative

<http://oclc.org/research/staff/wagner/index.shtm>

<mailto:wagnerh@oclc.org>