

Collection Description Application Profile

2007-03-11

- 1) Dublin Core Collections Application Profile Summary (pp 2-7)
<https://netfiles.uiuc.edu/sshreeve/www/dcmi/Collection-ap-summary/2007-03-09/>
- 2) Dublin Core Collections Application Profile (pp 8-54)
netfiles.uiuc.edu/sshreeve/www/dcmi/Collection-application-profile/2007-03-09/
-- <file:///localhost/Z:/u/folders/BARCELONA-PROFILE/CDAP.htm>
- 3) Dublin Core Collection Description Terms (pp 55-62)
<https://netfiles.uiuc.edu/sshreeve/www/dcmi/Collection-terms/2007-03-09/>
- 4) CDType Vocabulary (pp 63-67)
<https://netfiles.uiuc.edu/sshreeve/www/dcmi/Colldesc-type/2007-03-09/>
- 5) Accrual Method Vocabulary (pp 68-72)
<https://netfiles.uiuc.edu/sshreeve/www/dcmi/Accrual-method/2007-03-09/>
- 6) Description Accrual Policy Vocabulary (pp 73-76)
<https://netfiles.uiuc.edu/sshreeve/www/dcmi/Accrual-policy/2007-03-09/>
- 7) Frequency Vocabulary (pp 77-85)
<https://netfiles.uiuc.edu/sshreeve/www/dcmi/Frequency/2007-03-09/>



ABOUT THE INITIATIVE	DOCUMENTS	GROUPS	RESOURCES
DCMI NEWS	TOOLS AND SOFTWARE	PROJECTS	AskDCMI

Dublin Core Metadata Initiative[®]

[Home](#) > [Groups](#) > [Collections](#) > [Collection-ap-summary](#) > [2007-03-09](#) >



Dublin Core Metadata Initiative

Making it easier to find information

Dublin Core Collections Application Profile Summary

Creator:	Dublin Core Collection Description Working Group
Date Issued:	2007-03-09
Identifier:	http://dublincore.org/groups/collections/collection-ap-summary/2007-03-09/
Replaces:	http://dublincore.org/groups/collections/collection-ap-summary/2006-08-24/
Is Replaced By:	Not applicable
Latest Version:	http://dublincore.org/groups/collections/collection-ap-summary/
Status of Document:	This is a Dublin Core Application Profile.
Description of Document:	This document presents a summary view of the draft application profile for collection-level description developed by the Dublin Core Collection Description Working Group.

Introduction

Note: This document presents a summary view only of the application profile. For full details, including notes on the nature of Dublin Core Application Profiles in general, and on the scope and purpose of this DCAP in particular, see the full description of the Dublin Core Collections Application Profile [[DCCAP](#)].

Vocabularies/Namespaces used in this DCAP

All references to properties, classes, vocabulary encoding schemes and syntax encoding schemes in DC metadata descriptions are made using URIs. In this document, Qualified Names of the form `prefix ":" local-part` are used as abbreviations for URIs which identify metadata terms. Prefixes are assumed to be associated with Namespace Names (URIs) as follows, and the corresponding URI for the term is constructed by concatenating the Namespace Name and the `local-part`:

Vocabulary Title	Namespace Name	Prefix
The Dublin Core Metadata Element Set, v1.1	http://purl.org/dc/elements/1.1/	dc
Dublin Core Terms	http://purl.org/dc/terms/	dcterms
Dublin Core Type Vocabulary	http://purl.org/dc/dcmitype/	dcmitype
MARC Relator Code Properties	http://www.loc.gov/loc.terms/relators/	marcrel
Collection Description Terms	http://purl.org/cld/terms/	cld
Collection Description Type Vocabulary Terms	http://purl.org/cld/cdtype/	cdtype

How to Read the Tables in this Document

Each main table in this document describes how a set of terms (properties, classes, vocabulary encoding schemes, syntax encoding schemes) is used to construct a DC metadata description of a resource of a specified type (e.g. a Collection).

Each row within the main tables describes how a specified property should be used in a statement within a DC metadata description of a resource of the specified type.

- **Label for Property in this DCAP:** A short human-readable label that provides an indication of how the property is to be used in a DC metadata description of a resource of the specified type. The label does not appear in the description. It *may* be used to provide a descriptor for fields in displays of descriptions to human readers, but there is no requirement for display applications to use this label.
- **Property URI (as Qualified Name):** A unique name/identifier for the property. It is presented as a Qualified Name, but is an abbreviation for a URI. This URI is used to refer to the property in DC metadata descriptions.
- **Usage in this DCAP:** A description of how the property is to be applied in a description of a resource of the specified type. This information supplements the definition of the property provided by its owner/maintenance agency.
- **Obligation:** An indication of whether a statement using this property is required in a description of a resource of the specified type. M = mandatory; a

- statement using this property is required, OR = a statement using this property is optional but recommended, O = a statement using this property is optional
- **Vocabulary Encoding Scheme URI(s) (as Qualified Name(s)):** The unique names/identifiers of vocabulary encoding schemes from which values for the property should be drawn. Names are presented as Qualified Names, but are abbreviations for URIs. The URI is used to refer to the vocabulary encoding scheme in DC metadata descriptions. If no vocabulary encoding scheme is listed, then the DCAP does not specify a vocabulary encoding scheme from which values should be drawn. However the definition and usage of the property may determine that values of only certain types are appropriate. For example, the value of the `dc:creator` property must be an entity capable of action.
 - **Value URI:** An indication of whether, if a statement using the property (and vocabulary encoding scheme, where specified) is present, a value URI is to be used. M = mandatory - a value URI is required; MF = mandatory, fixed - a specified value URI is required; O = a value URI is optional (see [note](#)); N = a value URI is not permitted
 - **Value String:** An indication of whether, if a statement using the property (and vocabulary encoding scheme, where specified) is present, a value string is to be used. M = mandatory - a value string is required; MF = mandatory, fixed - a specified value string is required; O = a value string is optional (see [note](#)); N = a value string is not permitted
 - **Qualified Name(s) for Syntax Encoding Scheme(s):** The unique names/identifiers of datatypes from which value strings for the property should be drawn. Names are presented as Qualified Names, but are abbreviations for URIs. The URI is used to refer to the datatype in DC metadata descriptions. If no datatype is listed, then the DCAP does not specify a datatype from which value strings should be drawn.
 - **Rich Representation:** An indication of whether, if a statement using the property (and vocabulary encoding scheme, where specified) is present, a rich representation is to be used. M = mandatory - a rich representation is required; O = a rich representation is optional (see [note](#)); N = a rich representation is not permitted

Note: For each statement, **at least one** of the following components must be present: a value URI, a rich representation, a value string or a (related) description.

Describing a Collection

A Collection is an aggregation of items.

It is *recommended* that a description of a Collection should include a resource URI.

The description of a Collection includes statements using the terms described in the following table:

Label for Property in this DCAP	Property URI (as Qualified Name)	Usage in this DCAP	Obligation	Vocabulary Encoding Scheme URI(s) (as Qualified Name(s))	Value URI	Value String	Qualified Name(s) for Syntax Encoding Scheme(s)	Rich Represent
Type	dc:type	The nature or genre of the resource, i.e. <code>dc:type:Collection</code> .	M	dcterms:DCMIType	MF <code>dc:type:Collection</code>	MF Collection		N
Collection Identifier	dc:identifier	A URI for the collection.	OR		N	M	dcterms:URI	N
Title	dc:title	The name of the collection.	M		N	M		N
Alternative Title	dcterms:alternative (sub-property of <code>dc:title</code>)	Any form of name used as a substitute or alternative to the formal name of the collection	O		N	M		N
Description	dcterms:abstract (sub-property of <code>dc:description</code>)	A free text summary description of the collection.	M		N	M		N
Size	dcterms:extent (sub-property of <code>dc:format</code>)	The size of the collection.	O		N	M		N
Language	dc:language	A language of the items in the collection.	O	dcterms:ISO639-2	O	M		N
Item Type	dcterms:itemType	The nature or genre of one or more items within the collection.	O	dcterms:DCMIType	O	M		N
Item Format	dcterms:itemFormat	A media type, physical or digital, of one or more items within the collection.	O		O	M		N
Rights	dc:rights	A statement of any rights held in/over the collection.	O		O	O		N
Access Rights	dcterms:accessRights (sub-property of <code>dc:rights</code>)	A statement of any access restrictions placed on the collection, including allowed users, charges, etc.	O		O	O		N

Accrual Method	dcterms:accrualMethod	A method by which items are added to the collection.	O	cld:AccrualMethod	O	M		N
Accrual Periodicity	dcterms:accrualPeriodicity	A frequency with which items are added to the collection.	O	cld:Frequency	O	M		N
Accrual Policy	dcterms:accrualPolicy	A policy governing the addition of items to the collection.	O	cld:AccrualPolicy	O	M		N
Custodial History	dcterms:provenance	A statement of any changes in ownership and custody of the collection that are significant for its authenticity, integrity and interpretation.	O		O	O		N
Audience	dcterms:audience	A class of entity for whom the collection is intended or useful.	O		O	M		N
Subject	dc:subject	A subject or topic of the collection.	O	dcterms:DDC	O	M		N
				dcterms:LCC	O	M		N
				dcterms:LCSH	O	M		N
				dcterms:MESH	O	M		N
				dcterms:UDC	O	M		N
Spatial Coverage	dcterms:spatial (sub-property of dc:coverage)	An indicator of the spatial scope of the collection.	O		O	M		N
Temporal Coverage	dcterms:temporal (sub-property of dc:coverage)	An indicator of the temporal scope of the collection.	O		O	M		N
Dates Collection Accumulated	dcterms:created (sub-property of dc:date)	A range of dates over which the collection was accumulated.	O		O	M	cld:RKMS-ISO8601	N
Dates Items Created	cld:dateItemsCreated (sub-property of dc:date)	A range of dates over which the individual items within the collection were created.	O		O	M	cld:RKMS-ISO8601	N
Relationships between the Collection and Agents								
Collector	dc:creator	An entity who gathers (or gathered) the items in a collection together.	O		O	M		N
Owner	marcrel:OWN	An entity who has legal possession of the collection.	O		O	M		N
Relationships between the Collection and Location, Collection and Service								
Is Located At	cld:isLocatedAt (sub-property of dc:relation)	A location where the collection is held.	O		O	O		N
Is Accessed Via	cld:isAccessedVia (sub-property of dc:relation)	A service that provides access to the items within the collection.	O		O	O		N
Relationships between Collections (and between Collections and Catalogues or Indices)								
Sub-Collection	dcterms:hasPart (sub-property of dc:relation)	A second collection contained within the current collection.	O		O	O		N
Super-Collection	dcterms:isPartOf (sub-property of dc:relation)	A second collection that contains the current collection.	O		O	O		N
Collection-Description	cld:catalogueOrIndex (sub-property of dc:description)	A catalogue for, of index of, the current collection.	O		O	O		N

Associated collection	cld:associatedCollection (sub-property of dc:relation)	A second collection that is associated with the current collection.	O		O	O		N
Relationships between the Collection and other resources								
Associated publication	dcterms:isReferencedBy (sub-property of dc:relation)	A publication that is based on the use, study, or analysis of the collection.	O		O	O		N

Describing a Catalogue or Index

A Catalogue or Index is a resource which describes a Collection. This profile supports the description of Catalogues or Indices which are themselves also Collections, i.e. in the terms of the typology of the *Analytical Model of Collections and their Catalogues* [AMCC], Analytic Finding Aids, Hierarchic Finding Aids and Indexing Finding Aids.

It is *recommended* that a description of a Catalogue or Index should include a resource URI.

The description of a Catalogue or Index includes statements using the terms described in the following table:

Label for Property in this DCAP	Property URI (as Qualified Name)	Usage in this DCAP	Obligation	Vocabulary Encoding Scheme URI(s) (as Qualified Name(s))	Value URI	Value String	Qualified Name(s) for Syntax Encoding Scheme(s)	Rich Represent
Type	dc:type	The nature or genre of the resource, i.e. cdtype: CollectionDescription.	M	cld:CDType	MF cdtype: Collection Description	MF Collection- Description		N
Catalogue or Index Identifier	dc:identifier	A URI for the catalogue or index.	OR		N	M	dcterms:URI	N
Title	dc:title	The name of the catalogue or index.	M		N	M		N
Description	dcterms:abstract (sub-property of dc:description)	A summary description of the catalogue or index.	M		N	M		N
Catalogue or Index Type	dc:type	The type of the catalogue or index.	O	cld:CDType	O	M		N
Size	dcterms:extent (sub-property of dc:format)	The size of the catalogue or index.	O		N	M		N
Language	dc:language	A language of the items in the catalogue or index.	O	dcterms:ISO639-2	O	M		N
Item Type	cld:itemType	The nature or genre of one or more items within the catalogue or index.	O	dcterms:DCMIType	O	M		N
Item Format	cld:itemFormat	A media type, physical or digital, of one or more items within the catalogue or index.	O		O	M		N
Rights	dc:rights	A statement of any rights held in/over the catalogue or index.	O		O	O		N
Access Rights	dcterms:accessRights (sub-property of dc:rights)	A statement of any access restrictions placed on the catalogue or index, including allowed users, charges, etc.	O		O	O		N
Accrual Method	dcterms:accrualMethod	A method by which items are added to the catalogue or index.	O	cld:AccrualMethod	O	M		N
Accrual Periodicity	dcterms:accrualPeriodicity	A frequency with which items are added to the catalogue or index.	O	cld:Frequency	O	M		N

Accrual Policy	dcterms:accrualPolicy	A policy governing the addition of items to the catalogue or index.	O	cld:AccrualPolicy	O	M		N
Custodial History	dcterms:provenance	A statement of any changes in ownership and custody of the catalogue or index that are significant for its authenticity, integrity and interpretation.	O		O	M		N
Audience	dcterms:audience	A class of entity for whom the catalogue or index is intended or useful.	O		O	M		N
Dates Collection-Description Accumulated	dcterms:created (sub-property of dc: date)	A range of dates over which the catalogue or index was accumulated.	O		O	M	cld:RKMS-ISO8601	N
Dates Items Created	cld:dateItemsCreated (sub-property of dc: date)	A range of dates over which the individual items within the catalogue or index were created.	O		O	M	cld:RKMS-ISO8601	N
Relationships between the Catalogue or Index and Agents								
Collector	dc:creator	An entity who gathers (or gathered) the items in a catalogue or index together.	O		O	M		N
Owner	marcrel:OWN	An entity who has legal possession of the catalogue or index.	O		O	M		N
Relationships between the Catalogue or Index and Location, Catalogue or Index and Service								
Is Located At	cld:isLocatedAt (sub-property of dc: relation)	A location where the catalogue or index is held.	O		O	O		N
Is Accessed Via	cld:isAccessedVia (sub-property of dc: relation)	A service that provides access to the items within the catalogue or index.	O		O	O		N
Relationships between Catalogues or Indices(and between Catalogues or Indices and other Collections)								
Sub-Collection	dcterms:hasPart (sub-property of dc: relation)	A second catalogue or index contained within the current catalogue or index.	O		O	O		N
Super-Collection	dcterms:isPartOf (sub-property of dc: relation)	A second catalogue or index that contains the current catalogue or index.	O		O	O		N
Collection-Description	cld:catalogueOrIndex (sub-property of dc: description)	A second catalogue or index that describes the current catalogue or index.	O		O	O		N
Described collection	cld:describedCollection	A second collection that is described by the current catalogue or index.	M		O	O		N

References

[DCCAP] *Dublin Core Collections Application Profile*

<http://dublincore.org/groups/collections/collection-application-profile/>

[AMCC] Heaney, Michael. *An Analytical Model of Collections and their Catalogues*

<http://www.ukoln.ac.uk/metadata/rsip/model/>

Changes made in this version

- Changed Collection-Description to Catalogue or Index

2007-03-11

Page 7 of 85

- Aligned dcterms with current definitions
- Changed title to Dublin Core Collections Application Profile.



Metadata associated with this resource: <http://dublincore.org/groups/collections/collection-ap-summary/2006-08-24/index.shtml.rdf>

[Copyright](#) © 1995-2007 [DCMI](#) All Rights Reserved. DCMI [liability](#), [trademark/service mark](#), [document use](#) and [software licensing](#) rules apply. Your interactions with this site are in accordance with our [privacy](#) statements. Please feel free to [contact us](#) for any questions, comments or media inquiries.

DCMI and the DCMI Web site are hosted by [OCLC Research](#).

Copyright © 1995-2007 DCMI. All Rights Reserved.



[Home](#) > [Groups](#) > [Collections](#) > [Collection-application-profile](#) > [2007-03-09](#)



Dublin Core Metadata Initiative

Making it easier to find information

Dublin Core Collections Application Profile

Creator:	Dublin Core Collection Description Working Group
Date Issued:	2007-03-09
Identifier:	http://dublincore.org/groups/collections/collection-application-profile/2007-03-09/
Replaces:	http://dublincore.org/groups/collections/collection-application-profile/2006-08-24/
Is Replaced By:	Not applicable
Latest Version:	http://dublincore.org/groups/collections/collection-application-profile/
Status of Document:	This is a Dublin Core Application Profile.
Description of Document:	This document describes the application profile for collection-level description developed by the Dublin Core Collection Description Working Group.

Contents

- [Introduction](#)
- [Vocabularies/Namespaces Used in this DCAP](#)
- [Describing a Collection](#)
- [Describing a Catalogue or Index](#)
- [Vocabulary Encoding Schemes Used](#)
- [Syntax Encoding Schemes Used](#)
- [Administrative Metadata](#)

Introduction

Note: This document presents full details of the application profile. For a summary view, see the Dublin Core Collections Application Profile Summary [[APS](#)].

A Note on Dublin Core Application Profiles

A Dublin Core Application Profile (DCAP) specifies how some class of DC metadata *description sets* is constructed, typically the class of description sets which are deployed within a metadata application or within a set of applications and services operating within some domain or community. A DCAP describes:

1. The **set of terms** used in a class of DC metadata *description sets*.
2. **How** the terms in this set are deployed in this class of DC metadata description sets. This includes
 - the *types of resources* described by descriptions within these description sets,
 - the *properties* referenced in *statements* in those *descriptions*, and how those properties are used to describe resources of the specified type.

- requirements for the the occurrence of *statements* using a specified *property*,
- constraints on the sets of *values* which are referenced in a statement using a specified property (*vocabulary encoding schemes*), and
- constraints on the *datatypes* of the *value strings* occurring in a statement using a specified property (*syntax encoding schemes*)

The terms description set, description, property, value, vocabulary encoding scheme, value representation, rich representation, value string, syntax encoding scheme, and related description are used in the sense they are used in the DCMI Abstract Model [[DCAM](#)].

This document is **not** a description of an XML format. There may be multiple bindings of this DCAP, to XML and to other syntaxes.

Purpose and Scope

This document describes a DC Application Profile for describing:

- a collection
- a catalogue or index, i.e. an aggregation of metadata that describes a collection

The term "collection" can be applied to any aggregation of physical and/or digital resources. Those resources may be of any type, so examples might include aggregations of natural objects, created objects, "born-digital" items, digital surrogates of physical items, and the catalogues of such collections (as aggregations of metadata records). The criteria for aggregation may vary: e.g. by location, by type or form of the items, by provenance of the items, by source or ownership, and so on. Collections may contain any number of items and may have varying levels of permanence.

A "collection-level description" provides a description of the collection as a unit: the resource described by a collection-level description is the collection, rather than the individual items within that collection. Collection-level descriptions are referred to in Michael Heaney's *An Analytical Model of Collections and their Catalogues* as "unitary finding-aids" [[AMCC](#)].

The DC Collections AP specifies how to construct a DC metadata description set that provides a collection level description. It provides a means of creating **simple** descriptions of collections suitable for a **broad range** of collections, as well as **simple** descriptions of catalogues and indexes. Aggregations of physical or digital resources (collections) and aggregations of the metadata that describe them (catalogues and indices) can be described with similar properties. They are created by a collector, they have an accrual periodicity etc. They are related to each other because the aggregations of physical or digital resources (collections) can be described by one or more metadata aggregations (catalogues or indices). In order to distinguish the use of this DCAP either for collections or for catalogues or indices, the application of each property has been described for each case.

Functional Requirements of the DC Collections AP

The DC Collections AP is intended to provide a means of creating **simple** descriptions of collections and catalogues or indices suitable for a **broad range** of collections. It is designed primarily to support the discovery and selection of collections, though it may be used to support other functions such as collection management too. It is not intended to describe every possible characteristic of every type of collection.

The aim is that the DC Collections AP should support:

- the **discovery** of collections and catalogues or indices of potential interest, by enabling searching on various attributes of the collection including:
 - the name or title of the collection or catalogue or index
 - the subject and coverage of the collection
 - the nature or genre of the items within the collection or catalogue or index
 - the media type or format of the items within the collection or catalogue or index
 - the entity that created the collection or catalogue or index
 - the entity that owns the collection or catalogue or index
 - relationships between collections, between catalogues or indices and between collections and catalogues or indices
- the **identification** of a known collection or catalogue or index, by enabling the capture and disclosure of identifying attributes such as
 - the formal identifier(s) the collection or catalogue or index
 - the name or title of the collection or catalogue or index
 - a textual description of the collection or catalogue or index
- the **selection** of one or more collections or catalogues or indices from amongst a number of discovered collections or catalogues or indices, by enabling the capture and disclosure of attributes such as
 - a textual description of the collection or catalogue or index
 - a description of rights held in/over the collection or catalogue or index and conditions of access and use
 - a description of the custodial history of the collection or catalogue or index
 - a description of the way in which items are added to the collection or catalogue or index
- the **identification** of the location of the collection or catalogue or index

- the **identification** of the services that provide access to the collection or catalogue or index

Data Model

This section presents a simple entity-relational model for collections and their relationships to a number of other entities. [1] Figure 1 illustrates the entity types and their relationships

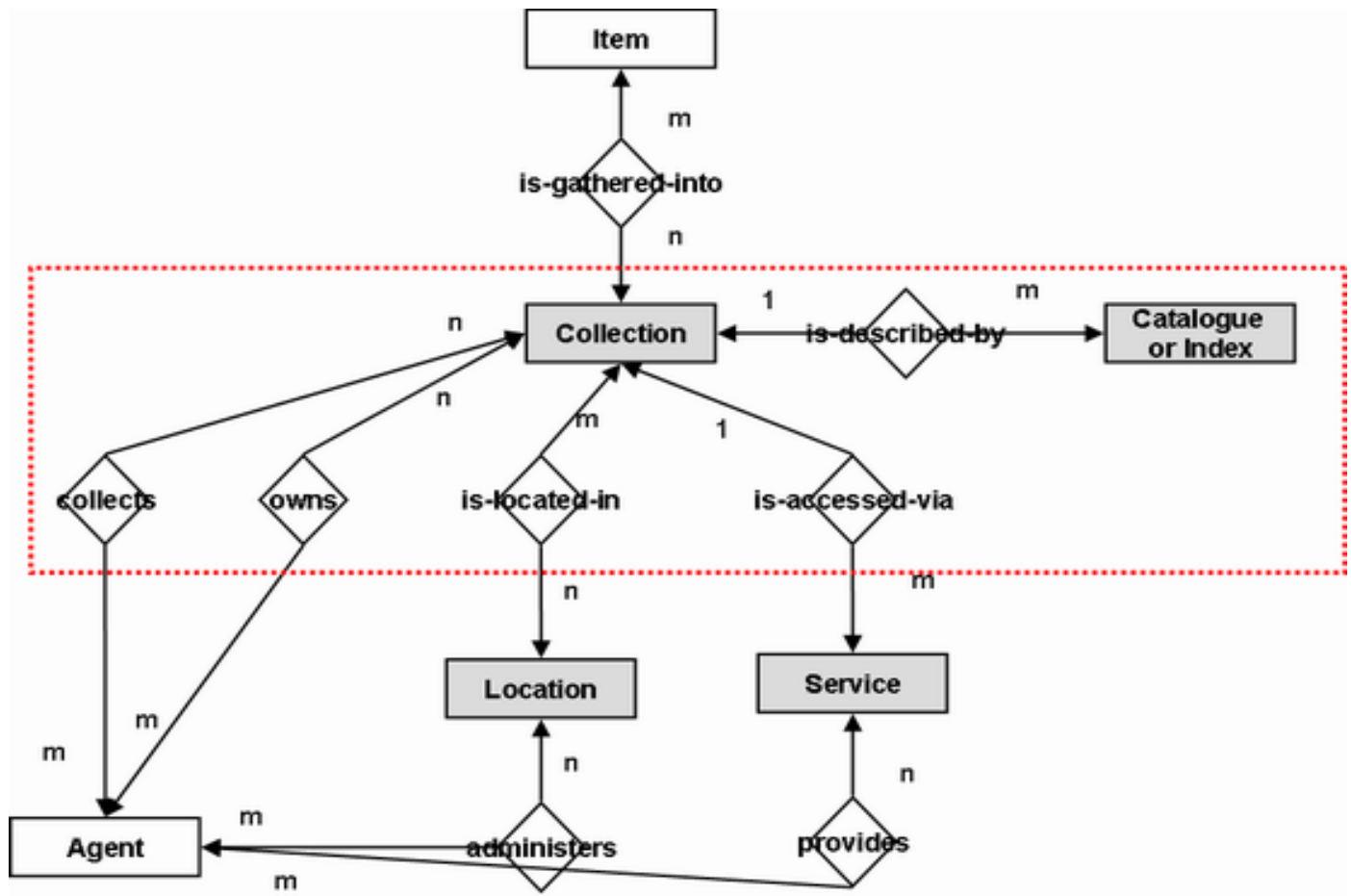


Fig 1: The DC Collections AP Data Model

The entity types are:

- **Collection** An aggregation of Items.
- **Item** A physical or digital resource.
- **Location** A place where a Collection is held.
- **Service** A system that provides access to the Items within the Collection
- **Catalogue or Index** An aggregation of Items which describes a Collection.

The DC Collections AP describes the use of properties to represent attributes of the collection and of the catalogue or index, and relationships between collections, between collections and catalogues or indices, and between collections, catalogues or indices and other entities. It does not describe how to represent attributes of other entities in the model.

The relationship types between entities are:

- an Item is-Gathered-Into one or more Collections
- a Collection is-Located-In zero or more Locations
- a Collection is-Accessed-Via zero or more Services
- a Collection is-Described-By zero or more Catalogues or Indices
- a Collection is-Owned-By one or more Agents
- a Collection is-Collected-By one or more Agents

The relationship between a collection and a catalogue or index is recorded in the DC Collections AP in the Catalogue or Index [cld:

[catalogueOrIndex](#)]

property. The relationship between a collection and an Agent is recorded either in the Collector [[dc:creator](#)] property (collects) or in the Owner [[marcrel:OWN](#)] property (owns). The relationship between a collection and its location is recorded in the Is Located At [[cld:isLocatedAt](#)] property.

The relationship between a collection and an access service is recorded in the Is Accessed Via [[cld:isAccessedVia](#)].

Figure 2 summarises the relationship between a collection and catalogue or index and their constituent items. The relationship between an item in the catalogue or index and an item in the (described) collection varies depending on the nature of the catalogue or index. In some cases, there may be fairly simple correspondences between items in the catalog or index and items in the described collection; in other cases the metadata items in the catalog or index may describe groupings of items within the described collection as well as individual items, or indeed the individual items may not be described at all. Further, a catalog or index which is itself a collection may be described by a second catalogue or index.

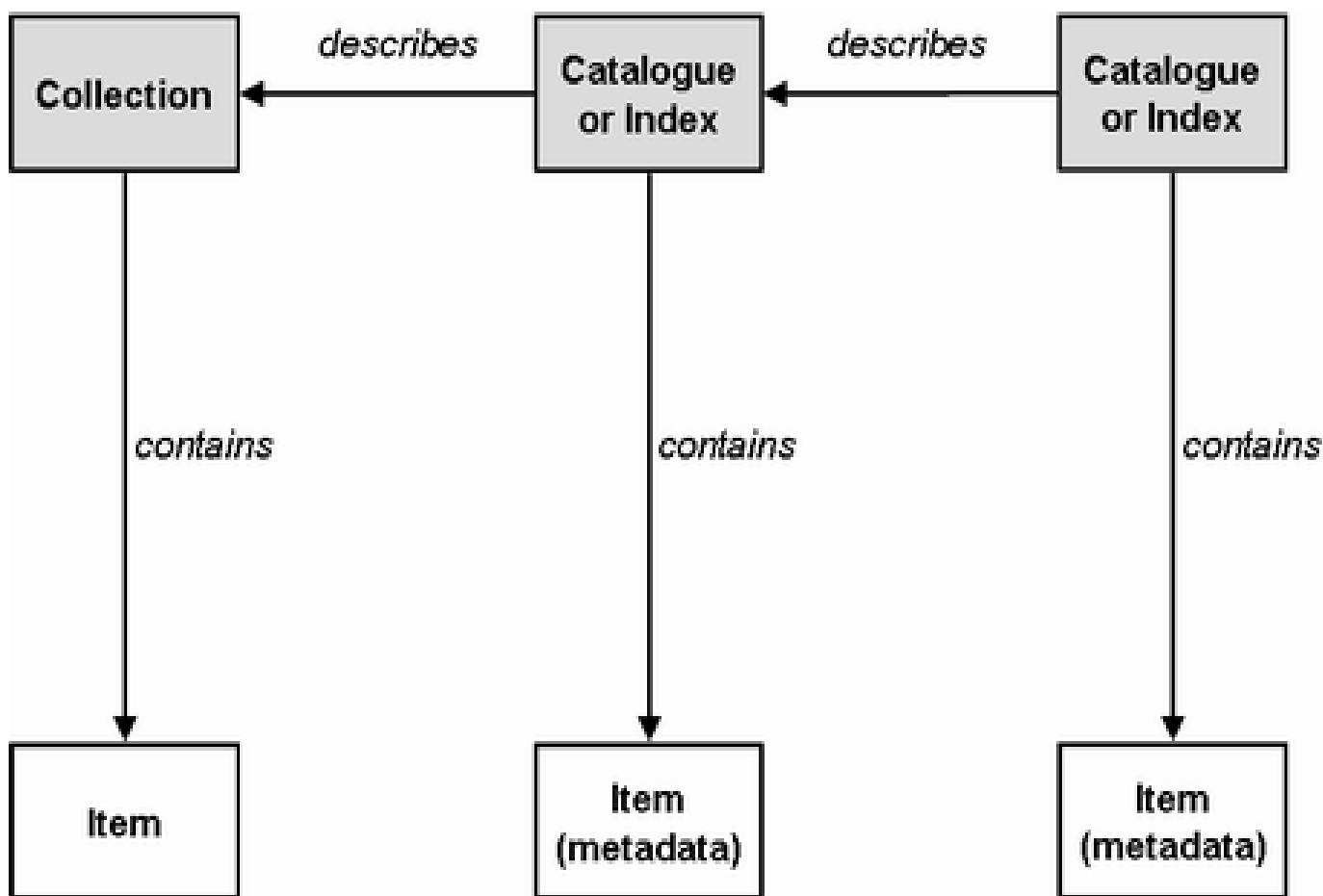


Fig 2: Collections , Catalogues and Indices

The Dublin Core Collections Application Profile (DC Collections AP)

The DC Collections AP specifies how to construct a DC metadata description set that includes:

- a description of one or more collections (aggregations of items)
- a description of zero or more catalogues or indices (resources which describe collections)

A description set conforming to this DCAP must contain at least one description of a collection. It may contain descriptions only of collections and catalogues or indices, or it may also include descriptions of resources of other types, related to those collections or catalogues or indices, which are referred to as values in statements about the collections or catalogues or indices. Such other resources might include the location of a collection, the services that provide access to a collection, concepts that are the subject of a collection, and agents related to the collection or catalogue or index. While this DCAP permits the inclusion of descriptions of those related resources in a description set, it does not specify the terms to be referenced in descriptions of resources other than collections and catalogues or indices.

The metadata terms referenced in the DC Collections AP are drawn from the DCMI metadata vocabularies and also from other metadata vocabularies owned by other agencies.

The DC Collections AP is independent of any particular syntax for representing description sets. Description sets conforming to the DC Collections AP may be represented using any of the conventions recommended by DCMI for expressing DC metadata based on the DCMI Abstract Model.

Vocabularies/Namespaces used in this DCAP

All references to properties and classes in DC metadata descriptions are made using URIs. In this document, Qualified Names of the form `prefix " : " local-part` are sometimes used as abbreviations for URIs which identify metadata terms. Prefixes are assumed to be associated with Namespace Names (URIs) as follows, and the corresponding URI for the term is constructed by concatenating the Namespace Name and the `local-part`:

Vocabulary Title	Namespace Name	Prefix
The Dublin Core Metadata Element Set, v1.1	http://purl.org/dc/elements/1.1/	dc
Dublin Core Terms	http://purl.org/dc/terms/	dcterms
Dublin Core Type Vocabulary	http://purl.org/dc/dcmitype/	dcmitype
MARC Relator Code Properties	http://www.loc.gov/loc/terms/relators/	marcrel
Collection Description Terms	http://purl.org/cld/terms/	cld
Collection Description Type Vocabulary Terms	http://purl.org/cld/cdtype/	cdtype

How to Read the Tables in this Document

The two sections "Describing a Collection" and "Describing a Catalogue or Index " each describe how a set of terms (properties, classes, vocabulary encoding schemes, syntax encoding schemes) is used to construct a DC metadata description of a resource of the specified type.

The first table in each of these sections describes the class, the type of resource, to which the metadata description applies.

- **Class URI:** The URI by which the class is referenced in a DC metadata description.
- **Qualified Name for Class:** The Qualified Name which is typically used as an abbreviation for the class URI.
- **Defined By:** The name and identifier of the metadata vocabulary from which the class is drawn.
- **Type of Term:** An indication of the type of the term, according to the typology of the DCMI Abstract Model
- **Subclass Of:** Class of which the current class is a subclass.
- **Label:** The short label provided for the class by its owner/maintenance agency.
- **Definition:** The definition provided for the class by its owner/maintenance agency.
- **Comments:** Additional information about the class provided by its owner/maintenance agency.
- **See Also:** A resource which provides further information about the class.

Each subsequent table in the section describes how a specified property is used in a statement within a DC metadata description. The use of the property is described using the following attributes:

- **Property URI:** The URI by which the property is referenced in a DC metadata description.
- **Qualified Name for Property:** A unique name/identifier for the property. It is presented as a Qualified Name, but is an abbreviation for the property URI.
- **Defined By:** The name and identifier of the metadata vocabulary from which the property is drawn.
- **Type of Term:** An indication of the type of the term, according to the typology of the DCMI Abstract Model
- **Subproperty Of:** A property of which the current property is a subproperty.
- **Source Label:** The short label provided for the property by its owner/maintenance agency.
- **Label in this DCAP:** A short human-readable label that provides an indication of how the property is to be used in a DC metadata description of a resource of the specified type. The label does not appear in the description. It *may* be used to provide a descriptor for fields in displays of descriptions to human readers, but there is no requirement for display applications to use this label.
- **Source Definition:** The definition provided for the property by its owner/maintenance agency.
- **Usage in this DCAP:** A description of how the property is to be applied in a description of a resource of the specified type. This information supplements the definition of the property provided by its owner/maintenance agency.
- **Comments for this DCAP:** Additional information about the use of the property in a description of a resource of the specified type, typically on the values and their representation.
- **Uses Vocabulary Encoding Scheme:** The unique names/identifiers of vocabulary encoding schemes from which values for the property

should be drawn. Names are presented as Qualified Names, but are abbreviations for URIs. The URI is used to refer to the vocabulary encoding scheme in DC metadata descriptions. If no vocabulary encoding scheme is listed, then the DCAP does not specify a vocabulary encoding scheme from which values should be drawn. However the definition and usage of the property may determine that values of only certain types are appropriate. For example, the value of the `dc:creator` property must be an entity capable of action.

- **Value URI:** An indication of whether, if a statement using the property (and vocabulary encoding scheme, where specified) is present, a value URI is to be used. Mandatory - a value URI is required; Mandatory, Fixed - a specified value URI is required; Optional = a value URI is optional (see [note](#)); Not permitted = a value URI is not permitted
- **Value String:** An indication of whether, if a statement using the property (and vocabulary encoding scheme, where specified) is present, a value string is to be used. Mandatory - a value string is required; Mandatory, Fixed - a specified value string is required; Optional = a value string is optional (see [note](#)); Not permitted = a value string is not permitted
- **Syntax Encoding Scheme(s):** The unique names/identifiers of datatypes from which value strings for the property should be drawn. Names are presented as Qualified Names, but are abbreviations for URIs. The URI is used to refer to the datatype in DC metadata descriptions. If no datatype is listed, then the DCAP does not specify a datatype from which value strings should be drawn.
- **Rich Representation:** An indication of whether, if a statement using the property (and vocabulary encoding scheme, where specified) is present, a rich representation is to be used. Mandatory - a rich representation is required; Optional = a rich representation is optional (see [note](#)); Not permitted = a rich representation is not permitted
- **Obligation:** An indication of whether a statement using this property is required in a DC metadata description. Mandatory = a statement using this property is required, Optional/Recommended = a statement using this property is optional but recommended, Optional = a statement using this property is optional
- **Condition:** Information on any additional conditions on the obligation to include a statement referencing the property in a description of a resource of the specified type
- **Minimum Occurrences:** The minimum number of statements referencing this property that can occur in a description of a resource of the specified type
- **Maximum Occurrences:** The maximum number of statements referencing this property that can occur in a description of a resource of the specified type

Note: For each value, **at least one** of the following components must be present: a value URI, a rich representation, a value string or a (related) description.

The following two sections describe the vocabulary encoding schemes and syntax encoding schemes referenced in the previous two sections.

- **Vocabulary Encoding Scheme URI:** The URI by which the vocabulary encoding scheme is referenced in a DC metadata description.
 - **Qualified Name for Vocabulary Encoding Scheme:** The Qualified Name which is typically used as an abbreviation for the class URI.
 - **Defined By:** The name and identifier of the metadata vocabulary from which the vocabulary encoding scheme is drawn.
 - **Type of Term:** An indication of the type of the term, according to the typology of the DCMI Abstract Model
 - **Label:** The short label provided for the vocabulary encoding scheme by its owner/maintenance agency.
 - **Definition:** The definition provided for the vocabulary encoding scheme by its owner/maintenance agency.
 - **Comments for this DCAP:** Additional information about the use of the vocabulary encoding scheme in this DCAP.
 - **See Also:** A resource which provides further information about the vocabulary encoding scheme.
 - **Used as Vocabulary Encoding Scheme For:** The type of resource and the property for which the vocabulary encoding scheme provides values.
-
- **Syntax Encoding Scheme URI:** The URI by which the syntax encoding scheme is referenced in a DC metadata description.
 - **Qualified Name for Syntax Encoding Scheme:** The Qualified Name which is typically used as an abbreviation for the class URI.
 - **Defined By:** The name and identifier of the metadata vocabulary from which the syntax encoding scheme is drawn.
 - **Type of Term:** An indication of the type of the term, according to the typology of the DCMI Abstract Model
 - **Label:** The short label provided for the syntax encoding scheme by its owner/maintenance agency.
 - **Definition:** The definition provided for the syntax encoding scheme by its owner/maintenance agency.
 - **Comments for this DCAP:** Additional information about the use of the syntax encoding scheme in this DCAP.
 - **See Also:** A resource which provides further information about the syntax encoding scheme.
 - **Used as Syntax Encoding Scheme For:** The type of resource and the property for which the syntax encoding scheme provides value strings.

Describing a Collection

Collection [dcmitype:Collection]

Class URI	http://purl.org/dc/dcmitype/Collection
Qualified Name for Class	dcmitype:Collection
Defined By	DCMI Type Vocabulary http://purl.org/dc/dcmitype/
Type of Term	Class
SubClass Of	[n/a]

Label	Collection
Definition	A collection is an aggregation of items. The term collection means that the resource is described as a group; its parts may be separately described and navigated.
Comments	[n/a]

- [Type \[dc:type\]](#)
- [Collection Identifier \[dc:identifier\]](#)
- [Title \[dc:title\]](#)
- [Alternative Title \[dcterms:alternative\]](#)
- [Description \[dcterms:abstract\]](#)
- [Size \[dcterms:extent\]](#)
- [Language \[dc:language\]](#)
- [Item Type \[cld:itemType\]](#)
- [Item Format \[cld:itemFormat\]](#)
- [Rights \[dc:rights\]](#)
- [Access Rights \[dcterms:accessRights\]](#)
- [Accrual Method \[dcterms:accrualMethod\]](#)
- [Accrual Periodicity \[dcterms:accrualPeriodicity\]](#)
- [Accrual Policy \[dcterms:accrualPolicy\]](#)
- [Custodial History \[dcterms:provenance\]](#)
- [Audience \[dcterms:audience\]](#)
- [Subject \[dc:subject\]](#)
- [Spatial Coverage \[dcterms:spatial\]](#)
- [Temporal Coverage \[dcterms:temporal\]](#)
- [Date Collection Accumulated \[dcterms:created\]](#)
- [Date Items Created \[cld:dateItemsCreated\]](#)
- [Collector \[dc:creator\]](#)
- [Owner \[marcrel:OWN\]](#)
- [Is Located At \[cld:isLocatedAt\]](#)
- [Is Accessed Via \[cld:isAccessedVia\]](#)
- [Sub-Collection \[dcterms:hasPart\]](#)
- [Super-Collection \[dcterms:isPartOf\]](#)
- [Catalogue or Index \[cld:catalogueOrIndex\]](#)
- [Associated Collection \[cld:associatedCollection\]](#)
- [Associated Publication \[dcterms:isReferencedBy\]](#)

Type [dc:type]

Property URI	http://purl.org/dc/elements/1.1/type
Qualified Name for Property	dc:type
Defined By	The Dublin Core Metadata Element Set, v1.1 http://purl.org/dc/elements/1.1/
Type of Term	Property
Subproperty Of	[n/a]
Source Label	Type
Label in this DCAP	[n/a]
Source Definition	The nature or genre of the resource.
Usage in this DCAP	The nature or genre of the resource, i.e. dcmitype:Collection.
Comments for this DCAP	The statement must assert that the resource is of type dcmitype:Collection.

Uses Vocabulary Encoding Scheme	dcterms:DCMIType , Dublin Core Terms http://purl.org/dc/terms/DCMIType			
	Value URI	Value String	Syntax Encoding Scheme(s)	Rich Represent
	Mandatory, Fixed dcmitype: Collection	Mandatory, Fixed Collection		Not permitted
Obligation	Mandatory			
Condition	[n/a]			
Minimum Occurrences	1			
Maximum Occurrences	1			

Collection Identifier [[dc:identifier](#)]

Property URI	http://purl.org/dc/elements/1.1/identifier			
Qualified Name for Property	dc:identifier			
Defined By	The Dublin Core Metadata Element Set, v1.1 http://purl.org/dc/elements/1.1/			
Type of Term	Property			
Subproperty Of	[n/a]			
Source Label	Identifier			
Label in this DCAP	Collection Identifier			
Source Definition	An unambiguous reference to the resource within a given context.			
Usage in this DCAP	A URI for the collection.			
Comments for this DCAP	<p>A collection identifier must be a URI, using a URI scheme that has been registered with IANA.</p> <p>The URI of the collection should be used as the resource URI of the description and also as the value string in a statement using the dc:identifier property.</p> <p>If multiple URIs are assigned to a collection, one of the URIs should be used as the resource URI, and each URI, including the resource URI, should be used as the value string in a separate statement using the dc:identifier property.</p>			
Uses Vocabulary Encoding Scheme	[Not specified]			
	Value URI	Value String	Syntax Encoding Scheme(s)	Rich Represent
	Not permitted	Mandatory	dcterms:URI	Not permitted
Obligation	Optional, but recommended.			
Condition	[n/a]			
Minimum Occurrences	0			
Maximum Occurrences	unbounded			

Title [[dc:title](#)]

Property URI	http://purl.org/dc/elements/1.1/title			
Qualified Name for Property	dc:title			

Defined By	The Dublin Core Metadata Element Set, v1.1 http://purl.org/dc/elements/1.1/										
Type of Term	Property										
Subproperty Of	[n/a]										
Source Label	Title										
Label in this DCAP	[n/a]										
Source Definition	A name given to the resource.										
Usage in this DCAP	The name of the collection.										
Comments for this DCAP	<p>A value string must be provided.</p> <p>To record titles in multiple languages, use multiple statements and in each statement associate the value string with the appropriate language tag.</p> <p>Where an existing name is used, the value string should preserve the original wording, order and spelling of an existing name. Punctuation need not reflect the usage of the original. Subtitles should be separated from the title by a sequence of space-colon-space, for example:</p> <p style="text-align: center;">Voices from the Dust Bowl: The Charles L. Todd and Robert Sonkin Migrant Worker Collection</p>										
Uses Vocabulary Encoding Scheme	[Not specified] <table border="1" style="margin-left: auto; margin-right: auto;"> <thead> <tr> <th>Value URI</th> <th>Value String</th> <th>Syntax Encoding Scheme(s)</th> <th>Rich Represent</th> </tr> </thead> <tbody> <tr> <td>Not permitted</td> <td>Mandatory</td> <td></td> <td>Not permitted</td> </tr> </tbody> </table>			Value URI	Value String	Syntax Encoding Scheme(s)	Rich Represent	Not permitted	Mandatory		Not permitted
Value URI	Value String	Syntax Encoding Scheme(s)	Rich Represent								
Not permitted	Mandatory		Not permitted								
Obligation	Mandatory										
Condition	[n/a]										
Minimum Occurrences	1										
Maximum Occurrences	unbounded										

Alternative Title [dcterms:alternative]

Property URI	http://purl.org/dc/terms/alternative
Qualified Name for Property	dcterms:alternative
Defined By	Dublin Core Terms http://purl.org/dc/terms/
Type of Term	Property
Subproperty Of	dc:title, Dublin Core Metadata Element Set, v1.1 http://purl.org/dc/elements/1.1/title
Source Label	Alternative
Label in this DCAP	Alternative Title
Source Definition	Any form of the title used as a substitute or alternative to the formal title of the resource.
Usage in this DCAP	Any form of the name used as a substitute or alternative to the formal name of the collection.
Comments for this DCAP	<p>A value string must be provided.</p> <p>To record alternative titles in multiple languages, use multiple statements and in each statement associate the value string with the appropriate language tag.</p> <p>Values may include acronyms that are used in addition to the name of the collection.</p>

Uses Vocabulary Encoding Scheme	[Not specified]								
	<table border="1"> <thead> <tr> <th>Value URI</th> <th>Value String</th> <th>Syntax Encoding Scheme(s)</th> <th>Rich Represent</th> </tr> </thead> <tbody> <tr> <td>Not permitted</td> <td>Mandatory</td> <td></td> <td>Not permitted</td> </tr> </tbody> </table>	Value URI	Value String	Syntax Encoding Scheme(s)	Rich Represent	Not permitted	Mandatory		Not permitted
Value URI	Value String	Syntax Encoding Scheme(s)	Rich Represent						
Not permitted	Mandatory		Not permitted						
Obligation	Optional								
Condition	[n/a]								
Minimum Occurrences	0								
Maximum Occurrences	unbounded								

Description [dcterms:abstract]

Property URI	http://purl.org/dc/terms/abstract								
Qualified Name for Property	dcterms:abstract								
Defined By	Dublin Core Terms http://purl.org/dc/terms/								
Type of Term	Property								
Subproperty Of	dc:description, Dublin Core Metadata Element Set, v1.1 http://purl.org/dc/elements/1.1/description								
Source Label	Abstract								
Label in this DCAP	Description								
Source Definition	A summary of the content of the resource.								
Usage in this DCAP	A free text summary description of the collection.								
Comments for this DCAP	<p>A value string must be provided.</p> <p>To record descriptions in multiple languages, use multiple statements and in each statement associate the value string with the appropriate language tag.</p> <p>Although a description might contain detailed subject-specific information, at least part of the description should be understandable by an end-user with no specialist knowledge of the subject area.</p>								
Uses Vocabulary Encoding Scheme	[Not specified]								
	<table border="1"> <thead> <tr> <th>Value URI</th> <th>Value String</th> <th>Syntax Encoding Scheme(s)</th> <th>Rich Represent</th> </tr> </thead> <tbody> <tr> <td>Not permitted</td> <td>Mandatory</td> <td></td> <td>Not permitted</td> </tr> </tbody> </table>	Value URI	Value String	Syntax Encoding Scheme(s)	Rich Represent	Not permitted	Mandatory		Not permitted
Value URI	Value String	Syntax Encoding Scheme(s)	Rich Represent						
Not permitted	Mandatory		Not permitted						
Obligation	Mandatory								
Condition	[n/a]								
Minimum Occurrences	1								
Maximum Occurrences	unbounded								

Size [dcterms:extent]

Property URI	http://purl.org/dc/terms/extent
Qualified Name for Property	dcterms:extent
Defined By	Dublin Core Terms http://purl.org/dc/terms/
Type of Term	Property

Subproperty Of	dc:format, Dublin Core Metadata Element Set, v1.1 http://purl.org/dc/elements/1.1/format								
Source Label	Extent								
Label in this DCAP	Size								
Source Definition	The size or duration of the resource.								
Usage in this DCAP	The size of the collection.								
Comments for this DCAP	A value string must be provided.								
Uses Vocabulary Encoding Scheme	[Not specified] <table border="1" data-bbox="399 504 1129 649"> <thead> <tr> <th>Value URI</th> <th>Value String</th> <th>Syntax Encoding Scheme(s)</th> <th>Rich Represent</th> </tr> </thead> <tbody> <tr> <td>Not permitted</td> <td>Mandatory</td> <td></td> <td>Not permitted</td> </tr> </tbody> </table>	Value URI	Value String	Syntax Encoding Scheme(s)	Rich Represent	Not permitted	Mandatory		Not permitted
Value URI	Value String	Syntax Encoding Scheme(s)	Rich Represent						
Not permitted	Mandatory		Not permitted						
Obligation	Optional								
Condition	[n/a]								
Minimum Occurrences	0								
Maximum Occurrences	unbounded								

Language [dc:language]

Property URI	http://purl.org/dc/elements/1.1/language								
Qualified Name for Property	dc:language								
Defined By	The Dublin Core Metadata Element Set, v1.1 http://purl.org/dc/elements/1.1/								
Type of Term	Property								
Subproperty Of	[n/a]								
Source Label	Language								
Label in this DCAP	[n/a]								
Source Definition	A language of the resource.								
Usage in this DCAP	A language of the items in the collection.								
Comments for this DCAP	A value string must be provided; a value URI may also be provided. The value string should be a language name in the form of the three character code defined by ISO 639-2. Where the collection covers multiple languages, a separate statement should be used for each language.								
Uses Vocabulary Encoding Scheme	dcterms:ISO639-2 , Dublin Core Terms http://purl.org/dc/terms/ISO639-2 <table border="1" data-bbox="399 1691 1129 1836"> <thead> <tr> <th>Value URI</th> <th>Value String</th> <th>Syntax Encoding Scheme(s)</th> <th>Rich Represent</th> </tr> </thead> <tbody> <tr> <td>Optional</td> <td>Mandatory</td> <td></td> <td>Not permitted</td> </tr> </tbody> </table>	Value URI	Value String	Syntax Encoding Scheme(s)	Rich Represent	Optional	Mandatory		Not permitted
Value URI	Value String	Syntax Encoding Scheme(s)	Rich Represent						
Optional	Mandatory		Not permitted						
Obligation	Optional								
Condition	[n/a]								
Minimum Occurrences	0								
Maximum Occurrences	unbounded								

Item Type [cld:itemType]

Property URI	http://purl.org/cld/terms/itemType										
Qualified Name for Property	cld:itemType										
Defined By	Collection Description Terms http://purl.org/cld/terms/										
Type of Term	Property										
Subproperty Of	[n/a]										
Source Label	Item Type										
Label in this DCAP	[n/a]										
Source Definition	The nature or genre of one or more items within the collection.										
Usage in this DCAP	[n/a]										
Comments for this DCAP	<p>A value string must be provided; a value URI may also be provided.</p> <p>Where the collection includes items of multiple types, a separate statement should be used for each type which is regarded as significant for a user of the collection description.</p>										
Uses Vocabulary Encoding Scheme	dcterms:DCMIType , Dublin Core Terms http://purl.org/dc/terms/DCMIType <table border="1" data-bbox="395 808 1129 954"> <thead> <tr> <th>Value URI</th> <th>Value String</th> <th>Syntax Encoding Scheme(s)</th> <th>Rich Represent</th> </tr> </thead> <tbody> <tr> <td>Optional</td> <td>Mandatory</td> <td></td> <td>Not permitted</td> </tr> </tbody> </table>			Value URI	Value String	Syntax Encoding Scheme(s)	Rich Represent	Optional	Mandatory		Not permitted
Value URI	Value String	Syntax Encoding Scheme(s)	Rich Represent								
Optional	Mandatory		Not permitted								
Obligation	Optional										
Condition	[n/a]										
Minimum Occurrences	0										
Maximum Occurrences	unbounded										

Item Format [cld:itemFormat]

Property URI	http://purl.org/cld/terms/itemFormat										
Qualified Name for Property	cld:itemFormat										
Defined By	Collection Description Terms http://purl.org/cld/terms/										
Type of Term	Property										
Subproperty Of	[n/a]										
Source Label	Item Format										
Label in this DCAP	[n/a]										
Source Definition	The media type, physical or digital, of one or more items within the collection.										
Usage in this DCAP	[n/a]										
Comments for this DCAP	<p>A value string must be provided; a value URI may also be provided.</p> <p>Where the collection includes items of multiple media types, a separate statement should be used for each media type which is regarded as significant for a user of the collection description.</p>										
Uses Vocabulary Encoding Scheme	[Not specified] <table border="1" data-bbox="395 1890 1129 2036"> <thead> <tr> <th>Value URI</th> <th>Value String</th> <th>Syntax Encoding Scheme(s)</th> <th>Rich Represent</th> </tr> </thead> <tbody> <tr> <td>Optional</td> <td>Mandatory</td> <td></td> <td>Not permitted</td> </tr> </tbody> </table>			Value URI	Value String	Syntax Encoding Scheme(s)	Rich Represent	Optional	Mandatory		Not permitted
Value URI	Value String	Syntax Encoding Scheme(s)	Rich Represent								
Optional	Mandatory		Not permitted								
Obligation	Optional										
Condition	[n/a]										

Minimum Occurrences	0
Maximum Occurrences	unbounded

Rights [dc:rights]

Property URI	http://purl.org/dc/elements/1.1/rights										
Qualified Name for Property	dc:rights										
Defined By	The Dublin Core Metadata Element Set, v1.1 http://purl.org/dc/elements/1.1/										
Type of Term	Property										
Subproperty Of	[n/a]										
Source Label	Rights										
Label in this DCAP	[n/a]										
Source Definition	Information about rights held in and over the resource.										
Usage in this DCAP	A statement of any rights held in/over the collection.										
Comments for this DCAP	<p>Either a value string or a value URI or both may be provided.</p> <p>To record information in multiple languages, use a single statement with multiple value strings and associate each value string with the appropriate language tag.</p>										
Uses Vocabulary Encoding Scheme	[Not specified] <table border="1" data-bbox="395 981 1129 1126"> <thead> <tr> <th>Value URI</th> <th>Value String</th> <th>Syntax Encoding Scheme(s)</th> <th>Rich Represent</th> </tr> </thead> <tbody> <tr> <td>Optional</td> <td>Optional</td> <td></td> <td>Not permitted</td> </tr> </tbody> </table>			Value URI	Value String	Syntax Encoding Scheme(s)	Rich Represent	Optional	Optional		Not permitted
Value URI	Value String	Syntax Encoding Scheme(s)	Rich Represent								
Optional	Optional		Not permitted								
Obligation	Optional										
Condition	[n/a]										
Minimum Occurrences	0										
Maximum Occurrences	unbounded										

Access Rights [dcterms:accessRights]

Property URI	http://purl.org/dc/terms/accessRights		
Qualified Name for Property	dcterms:accessRights		
Defined By	Dublin Core Terms http://purl.org/dc/terms/		
Type of Term	Property		
Subproperty Of	dc:rights, Dublin Core Metadata Element Set, v1.1 http://purl.org/dc/elements/1.1/rights		
Source Label	Access Rights		
Label in this DCAP	[n/a]		
Source Definition	Information about who can access the resource or an indication of its security status.		
Usage in this DCAP	A statement of any access restrictions placed on the collection, including allowed users, charges, etc.		
Comments for this DCAP	<p>Either a value string or a value URI or both may be provided.</p> <p>To record information in multiple languages, use a single statement with multiple value strings and associate each value string with the appropriate language tag.</p>		

Uses Vocabulary Encoding Scheme	[Not specified]								
	<table border="1"> <thead> <tr> <th>Value URI</th> <th>Value String</th> <th>Syntax Encoding Scheme(s)</th> <th>Rich Represent</th> </tr> </thead> <tbody> <tr> <td>Optional</td> <td>Optional</td> <td></td> <td>Not permitted</td> </tr> </tbody> </table>	Value URI	Value String	Syntax Encoding Scheme(s)	Rich Represent	Optional	Optional		Not permitted
Value URI	Value String	Syntax Encoding Scheme(s)	Rich Represent						
Optional	Optional		Not permitted						
Obligation	Optional								
Condition	[n/a]								
Minimum Occurrences	0								
Maximum Occurrences	unbounded								

Accrual Method [dcterms:accrualMethod]

Property URI	http://purl.org/dc/terms/accrualMethod								
Qualified Name for Property	dcterms:accrualMethod								
Defined By	Dublin Core Terms http://purl.org/dc/terms/								
Type of Term	Property								
Subproperty Of	[n/a]								
Source Label	Accrual Method								
Label in this DCAP	[n/a]								
Source Definition	A method by which items are added to a collection.								
Usage in this DCAP	[n/a]								
Comments for this DCAP	Recommended best practice is to use a value from the Collection Description Accrual Method vocabulary encoding scheme. A value string must be provided; a value URI may also be provided. Where multiple methods apply, a separate statement should be used for each method.								
Uses Vocabulary Encoding Scheme	cld:AccrualMethod , Collection Description Terms http://purl.org/cld/terms/AccrualMethod								
	<table border="1"> <thead> <tr> <th>Value URI</th> <th>Value String</th> <th>Syntax Encoding Scheme(s)</th> <th>Rich Represent</th> </tr> </thead> <tbody> <tr> <td>Optional</td> <td>Mandatory</td> <td></td> <td>Not permitted</td> </tr> </tbody> </table>	Value URI	Value String	Syntax Encoding Scheme(s)	Rich Represent	Optional	Mandatory		Not permitted
Value URI	Value String	Syntax Encoding Scheme(s)	Rich Represent						
Optional	Mandatory		Not permitted						
Obligation	Optional								
Condition	[n/a]								
Minimum Occurrences	0								
Maximum Occurrences	unbounded								

Accrual Periodicity [dcterms:accrualPeriodicity]

Property URI	http://purl.org/dc/terms/accrualPeriodicity
Qualified Name for Property	dcterms:accrualPeriodicity
Defined By	Dublin Core Terms http://purl.org/dc/terms/
Type of Term	Property
Subproperty Of	[n/a]

Source Label	Accrual Periodicity								
Label in this DCAP	[n/a]								
Source Definition	A frequency with which items are added to a collection.								
Usage in this DCAP	[n/a]								
Comments for this DCAP	Recommended best practice is to use a value from the Collection Description Frequency vocabulary encoding scheme. A value string must be provided; a value URI may also be provided.								
Uses Vocabulary Encoding Scheme	cld:Frequency , Collection Description Terms http://purl.org/cld/terms/Frequency <table border="1"> <thead> <tr> <th>Value URI</th> <th>Value String</th> <th>Syntax Encoding Scheme(s)</th> <th>Rich Represent</th> </tr> </thead> <tbody> <tr> <td>Optional</td> <td>Mandatory</td> <td></td> <td>Not permitted</td> </tr> </tbody> </table>	Value URI	Value String	Syntax Encoding Scheme(s)	Rich Represent	Optional	Mandatory		Not permitted
Value URI	Value String	Syntax Encoding Scheme(s)	Rich Represent						
Optional	Mandatory		Not permitted						
Obligation	Optional								
Condition	[n/a]								
Minimum Occurrences	0								
Maximum Occurrences	unbounded								

Accrual Policy [dcterms:accrualPolicy]

Property URI	http://purl.org/dc/terms/accrualPolicy								
Qualified Name for Property	dcterms:accrualPolicy								
Defined By	Dublin Core Terms http://purl.org/dc/terms/								
Type of Term	Property								
Subproperty Of	[n/a]								
Source Label	Accrual Policy								
Label in this DCAP	[n/a]								
Source Definition	A policy governing the addition of items to a collection.								
Usage in this DCAP	A policy governing the addition of items to a collection.								
Comments for this DCAP	Recommended best practice is to use a value from the Collection Description Accrual Policy vocabulary encoding scheme. A value string must be provided; a value URI may also be provided. Where multiple policies apply, a separate statement should be used for each policy.								
Uses Vocabulary Encoding Scheme	cld:AccrualPolicy , Collection Description Terms http://purl.org/cld/terms/AccrualPolicy <table border="1"> <thead> <tr> <th>Value URI</th> <th>Value String</th> <th>Syntax Encoding Scheme(s)</th> <th>Rich Represent</th> </tr> </thead> <tbody> <tr> <td>Optional</td> <td>Mandatory</td> <td></td> <td>Not permitted</td> </tr> </tbody> </table>	Value URI	Value String	Syntax Encoding Scheme(s)	Rich Represent	Optional	Mandatory		Not permitted
Value URI	Value String	Syntax Encoding Scheme(s)	Rich Represent						
Optional	Mandatory		Not permitted						
Obligation	Optional								
Condition	[n/a]								
Minimum Occurrences	0								
Maximum Occurrences	unbounded								

Custodial History [dcterms:provenance]

Property URI	http://purl.org/dc/terms/provenance										
Qualified Name for Property	dcterms:provenance										
Defined By	Dublin Core Terms http://purl.org/dc/terms/										
Type of Term	Property										
Subproperty Of	[n/a]										
Source Label	Provenance										
Label in this DCAP	Custodial History										
Source Definition	A statement of any changes in ownership and custody of the resource since its creation that are significant for its authenticity, integrity and interpretation.										
Usage in this DCAP	A statement of any changes in ownership and custody of the collection that are significant for its authenticity, integrity and interpretation.										
Comments for this DCAP	<p>Either a value string or a value URI or both may be provided.</p> <p>To record information in multiple languages, use a single statement with multiple value strings and associate each value string with the appropriate language tag.</p>										
Uses Vocabulary Encoding Scheme	[Not specified] <table border="1" data-bbox="399 862 1129 1008"> <thead> <tr> <th>Value URI</th> <th>Value String</th> <th>Syntax Encoding Scheme(s)</th> <th>Rich Represent</th> </tr> </thead> <tbody> <tr> <td>Optional</td> <td>Mandatory</td> <td></td> <td>Not permitted</td> </tr> </tbody> </table>			Value URI	Value String	Syntax Encoding Scheme(s)	Rich Represent	Optional	Mandatory		Not permitted
Value URI	Value String	Syntax Encoding Scheme(s)	Rich Represent								
Optional	Mandatory		Not permitted								
Obligation	Optional										
Condition	[n/a]										
Minimum Occurrences	0										
Maximum Occurrences	unbounded										

Audience [dcterms:audience]

Property URI	http://purl.org/dc/terms/audience										
Qualified Name for Property	dcterms:audience										
Defined By	Dublin Core Terms http://purl.org/dc/terms/										
Type of Term	Property										
Subproperty Of	[n/a]										
Source Label	Audience										
Label in this DCAP	[n/a]										
Source Definition	A class of entity for whom the resource is intended or useful.										
Usage in this DCAP	A class of entity for whom the collection is intended or useful.										
Comments for this DCAP	<p>A value string must be provided; a value URI may also be provided.</p> <p>Where a collection is intended or useful for multiple audiences, a separate statement should be used for each audience.</p>										
Uses Vocabulary Encoding Scheme	[Not specified] <table border="1" data-bbox="399 1944 1129 2089"> <thead> <tr> <th>Value URI</th> <th>Value String</th> <th>Syntax Encoding Scheme(s)</th> <th>Rich Represent</th> </tr> </thead> <tbody> <tr> <td>Optional</td> <td>Mandatory</td> <td></td> <td>Not permitted</td> </tr> </tbody> </table>			Value URI	Value String	Syntax Encoding Scheme(s)	Rich Represent	Optional	Mandatory		Not permitted
Value URI	Value String	Syntax Encoding Scheme(s)	Rich Represent								
Optional	Mandatory		Not permitted								

Obligation	Optional
Condition	[n/a]
Minimum Occurrences	0
Maximum Occurrences	unbounded

Subject [dc:subject]

Property URI	http://purl.org/dc/elements/1.1/subject										
Qualified Name for Property	dc:subject										
Defined By	The Dublin Core Metadata Element Set, v1.1 http://purl.org/dc/elements/1.1/										
Type of Term	Property										
Subproperty Of	[n/a]										
Source Label	Subject and Keywords										
Label in this DCAP	Subject										
Source Definition	The topic of the resource.										
Usage in this DCAP	A subject or topic associated with the items in the collection.										
Comments for this DCAP	<p>Keywords or subject descriptors associated with items in the collection.</p> <p>The terms used indicate the subject matter of the collection.</p> <p>The vocabulary encoding schemes below are those recommended by DCMI. Other appropriate vocabulary encoding schemes may be used, and the use of a scheme must be indicated.</p> <p>A value string must be provided; a value URI may also be provided.</p> <p>Where multiple keywords or subject descriptors are provided, a separate statement should be used for each keyword or descriptor.</p>										
Uses Vocabulary Encoding Scheme	dcterms:LCSH , Dublin Core Terms http://purl.org/dc/terms/LCSH <table border="1" data-bbox="395 1339 1129 1485"> <thead> <tr> <th>Value URI</th> <th>Value String</th> <th>Syntax Encoding Scheme(s)</th> <th>Rich Represent</th> </tr> </thead> <tbody> <tr> <td>Optional</td> <td>Mandatory</td> <td></td> <td>Not permitted</td> </tr> </tbody> </table>			Value URI	Value String	Syntax Encoding Scheme(s)	Rich Represent	Optional	Mandatory		Not permitted
Value URI	Value String	Syntax Encoding Scheme(s)	Rich Represent								
Optional	Mandatory		Not permitted								
Uses Vocabulary Encoding Scheme	dcterms:LCC , Dublin Core Terms http://purl.org/dc/terms/LCC <table border="1" data-bbox="395 1585 1129 1731"> <thead> <tr> <th>Value URI</th> <th>Value String</th> <th>Syntax Encoding Scheme(s)</th> <th>Rich Represent</th> </tr> </thead> <tbody> <tr> <td>Optional</td> <td>Mandatory</td> <td></td> <td>Not permitted</td> </tr> </tbody> </table>			Value URI	Value String	Syntax Encoding Scheme(s)	Rich Represent	Optional	Mandatory		Not permitted
Value URI	Value String	Syntax Encoding Scheme(s)	Rich Represent								
Optional	Mandatory		Not permitted								
Uses Vocabulary Encoding Scheme	dcterms:MESH , Dublin Core Terms http://purl.org/dc/terms/MESH <table border="1" data-bbox="395 1832 1129 1977"> <thead> <tr> <th>Value URI</th> <th>Value String</th> <th>Syntax Encoding Scheme(s)</th> <th>Rich Represent</th> </tr> </thead> <tbody> <tr> <td>Optional</td> <td>Mandatory</td> <td></td> <td>Not permitted</td> </tr> </tbody> </table>			Value URI	Value String	Syntax Encoding Scheme(s)	Rich Represent	Optional	Mandatory		Not permitted
Value URI	Value String	Syntax Encoding Scheme(s)	Rich Represent								
Optional	Mandatory		Not permitted								

Uses Vocabulary Encoding Scheme	dcterms:DDC , Dublin Core Terms http://purl.org/dc/terms/DDC								
	<table border="1"> <thead> <tr> <th>Value URI</th> <th>Value String</th> <th>Syntax Encoding Scheme(s)</th> <th>Rich Represent</th> </tr> </thead> <tbody> <tr> <td>Optional</td> <td>Mandatory</td> <td></td> <td>Not permitted</td> </tr> </tbody> </table>	Value URI	Value String	Syntax Encoding Scheme(s)	Rich Represent	Optional	Mandatory		Not permitted
Value URI	Value String	Syntax Encoding Scheme(s)	Rich Represent						
Optional	Mandatory		Not permitted						
Uses Vocabulary Encoding Scheme	dcterms:UDC , Dublin Core Terms http://purl.org/dc/terms/UDC								
	<table border="1"> <thead> <tr> <th>Value URI</th> <th>Value String</th> <th>Syntax Encoding Scheme(s)</th> <th>Rich Represent</th> </tr> </thead> <tbody> <tr> <td>Optional</td> <td>Mandatory</td> <td></td> <td>Not permitted</td> </tr> </tbody> </table>	Value URI	Value String	Syntax Encoding Scheme(s)	Rich Represent	Optional	Mandatory		Not permitted
Value URI	Value String	Syntax Encoding Scheme(s)	Rich Represent						
Optional	Mandatory		Not permitted						
Obligation	Optional								
Condition	[n/a]								
Minimum Occurrences	0								
Maximum Occurrences	unbounded								

Spatial Coverage [[dcterms:spatial](#)]

Property URI	http://purl.org/dc/terms/spatial								
Qualified Name for Property	dcterms:spatial								
Defined By	Dublin Core Terms http://purl.org/dc/terms/								
Type of Term	Property								
Subproperty Of	dc:coverage, Dublin Core Metadata Element Set, v1.1 http://purl.org/dc/elements/1.1/coverage								
Source Label	Spatial								
Label in this DCAP	Spatial Coverage								
Source Definition	Spatial characteristics of the intellectual content of the resource.								
Usage in this DCAP	An indicator of the spatial scope of the collection.								
Comments for this DCAP	A value string must be provided; a value URI may also be provided. Where descriptors of multiple spatial locations are provided, a separate statement should be used for each descriptor.								
Uses Vocabulary Encoding Scheme	[Not specified]								
	<table border="1"> <thead> <tr> <th>Value URI</th> <th>Value String</th> <th>Syntax Encoding Scheme(s)</th> <th>Rich Represent</th> </tr> </thead> <tbody> <tr> <td>Optional</td> <td>Mandatory</td> <td></td> <td>Not permitted</td> </tr> </tbody> </table>	Value URI	Value String	Syntax Encoding Scheme(s)	Rich Represent	Optional	Mandatory		Not permitted
Value URI	Value String	Syntax Encoding Scheme(s)	Rich Represent						
Optional	Mandatory		Not permitted						
Obligation	Optional								
Condition	[n/a]								
Minimum Occurrences	0								
Maximum Occurrences	unbounded								

Temporal Coverage [[dcterms:temporal](#)]

Property URI	http://purl.org/dc/terms/temporal
---------------------	---

Qualified Name for Property	dcterms:temporal								
Defined By	Dublin Core Terms http://purl.org/dc/terms/								
Type of Term	Property								
Subproperty Of	dc:coverage, Dublin Core Metadata Element Set, v1.1 http://purl.org/dc/elements/1.1/coverage								
Source Label	Temporal								
Label in this DCAP	Temporal Coverage								
Source Definition	Temporal characteristics of the intellectual content of the resource.								
Usage in this DCAP	An indicator of the temporal scope of the collection.								
Comments for this DCAP	A value string must be provided; a value URI may also be provided. Where descriptors of multiple spatial locations are provided, a separate statement should be used for each descriptor.								
Uses Vocabulary Encoding Scheme	[Not specified] <table border="1" data-bbox="395 757 1129 902"> <thead> <tr> <th>Value URI</th> <th>Value String</th> <th>Syntax Encoding Scheme(s)</th> <th>Rich Represent</th> </tr> </thead> <tbody> <tr> <td>Optional</td> <td>Mandatory</td> <td></td> <td>Not permitted</td> </tr> </tbody> </table>	Value URI	Value String	Syntax Encoding Scheme(s)	Rich Represent	Optional	Mandatory		Not permitted
Value URI	Value String	Syntax Encoding Scheme(s)	Rich Represent						
Optional	Mandatory		Not permitted						
Obligation	Optional								
Condition	[n/a]								
Minimum Occurrences	0								
Maximum Occurrences	unbounded								

Dates Collection Accumulated [dcterms:created]

Property URI	http://purl.org/dc/terms/created
Qualified Name for Property	dcterms:created
Defined By	Dublin Core Terms http://purl.org/dc/terms/
Type of Term	Property
Subproperty Of	dc:date, Dublin Core Metadata Element Set, v1.1 http://purl.org/dc/elements/1.1/date
Source Label	Created
Label in this DCAP	Dates Collection Accumulated
Source Definition	Date of creation of the resource.
Usage in this DCAP	A range of dates over which the collection was accumulated.
Comments for this DCAP	A value string must be provided. A date range should be supplied in the form described by RKMS-ISO8601. Start dates and end dates should be in the form of a date or date-time combination as specified by W3CDTF. Start dates and end dates should be separated by a solidus (forward slash) (/). Either the start date or the end date may be omitted to indicate an open-ended date range. All the following are examples of RKMS-ISO8601 date ranges: 1888/1894 1960/ /1960 2000-02/2000-06-18

	<p>indicating, '1888 to 1894', '1960 onwards', 'up until 1960' and 'February 2000 to 18 June 2000' respectively.</p> <p>Where multiple ranges are required, a separate statement should be used for each range.</p>								
Uses Vocabulary Encoding Scheme	<p>[Not specified]</p> <table border="1"> <thead> <tr> <th>Value URI</th> <th>Value String</th> <th>Syntax Encoding Scheme(s)</th> <th>Rich Represent</th> </tr> </thead> <tbody> <tr> <td>Optional</td> <td>Mandatory</td> <td>cld:RKMS-ISO8601</td> <td>Not permitted</td> </tr> </tbody> </table>	Value URI	Value String	Syntax Encoding Scheme(s)	Rich Represent	Optional	Mandatory	cld:RKMS-ISO8601	Not permitted
Value URI	Value String	Syntax Encoding Scheme(s)	Rich Represent						
Optional	Mandatory	cld:RKMS-ISO8601	Not permitted						
Obligation	Optional								
Condition	[n/a]								
Minimum Occurrences	0								
Maximum Occurrences	unbounded								

Dates Items Created [[cld:dateItemsCreated](#)]

Property URI	http://purl.org/cld/terms/dateItemsCreated								
Qualified Name for Property	cld:dateItemsCreated								
Defined By	Collection Description Terms http://purl.org/cld/terms/								
Type of Term	Property								
Subproperty Of	dc:date, Dublin Core Metadata Element Set, v1.1 http://purl.org/dc/elements/1.1/date								
Source Label	Date Items Created								
Label in this DCAP	[n/a]								
Source Definition	A range of dates over which the individual items within the collection were created.								
Usage in this DCAP	[n/a]								
Comments for this DCAP	<p>A value string must be provided.</p> <p>A date range should be supplied in the form described by RKMS-ISO8601. Start dates and end dates should be in the form of a date or date-time combination as specified by W3CDTF. Start dates and end dates should be separated by a solidus (forward slash) (/). Either the start date or the end date may be omitted to indicate an open-ended date range.</p> <p>All the following are examples of RKMS-ISO8601 date ranges:</p> <p style="padding-left: 40px;">1888/1894 1960/ /1960 2000-02/2000-06-18</p> <p>indicating, '1888 to 1894', '1960 onwards', 'up until 1960' and 'February 2000 to 18 June 2000' respectively.</p> <p>Where multiple ranges are required, a separate statement should be used for each range.</p>								
Uses Vocabulary Encoding Scheme	<p>[Not specified]</p> <table border="1"> <thead> <tr> <th>Value URI</th> <th>Value String</th> <th>Syntax Encoding Scheme(s)</th> <th>Rich Represent</th> </tr> </thead> <tbody> <tr> <td>Optional</td> <td>Mandatory</td> <td>cld:RKMS-ISO8601</td> <td>Not permitted</td> </tr> </tbody> </table>	Value URI	Value String	Syntax Encoding Scheme(s)	Rich Represent	Optional	Mandatory	cld:RKMS-ISO8601	Not permitted
Value URI	Value String	Syntax Encoding Scheme(s)	Rich Represent						
Optional	Mandatory	cld:RKMS-ISO8601	Not permitted						
Obligation	Optional								

Condition	[n/a]
Minimum Occurrences	0
Maximum Occurrences	unbounded

Collector [dc:creator]

Property URI	http://purl.org/dc/elements/1.1/creator		
Qualified Name for Property	dc:creator		
Defined By	The Dublin Core Metadata Element Set, v1.1 http://purl.org/dc/elements/1.1/		
Type of Term	Property		
Subproperty Of	[n/a]		
Source Label	Creator		
Label in this DCAP	Collector		
Source Definition	An entity primarily responsible for making the resource.		
Usage in this DCAP	An entity who gathers (or gathered) the items in a collection together.		
Comments for this DCAP	A value string must be provided; a value URI may also be provided. The value string should be the name of the entity.		
Uses Vocabulary Encoding Scheme	[Not specified]		
	Value URI	Value String	Syntax Encoding Scheme(s)
	Optional	Mandatory	Not permitted
Obligation	Optional		
Condition	[n/a]		
Minimum Occurrences	0		
Maximum Occurrences	unbounded		

Owner [marcrel:OWN]

Property URI	http://www.loc.gov/loc.terms/relators/OWN		
Qualified Name for Property	marcrel:OWN		
Defined By	MARC Relator Codes http://www.loc.gov/loc.terms/relators/		
Type of Term	Property		
Subproperty Of	[n/a]		
Source Label	Owner		
Label in this DCAP	[n/a]		
Source Definition	The person or organization that currently owns an item or collection.		
Usage in this DCAP	An entity who has legal possession of the collection.		
Comments for this DCAP	A value string must be provided; a value URI may also be provided. The value string should be the name of the entity.		

Uses Vocabulary Encoding Scheme	[Not specified]								
	<table border="1"> <thead> <tr> <th>Value URI</th> <th>Value String</th> <th>Syntax Encoding Scheme(s)</th> <th>Rich Represent</th> </tr> </thead> <tbody> <tr> <td>Optional</td> <td>Mandatory</td> <td></td> <td>Not permitted</td> </tr> </tbody> </table>	Value URI	Value String	Syntax Encoding Scheme(s)	Rich Represent	Optional	Mandatory		Not permitted
Value URI	Value String	Syntax Encoding Scheme(s)	Rich Represent						
Optional	Mandatory		Not permitted						
Obligation	Optional								
Condition	[n/a]								
Minimum Occurrences	0								
Maximum Occurrences	unbounded								

Is Located At [cld:isLocatedAt]

Property URI	http://purl.org/cld/terms/isLocatedAt								
Qualified Name for Property	cld:isLocatedAt								
Defined By	Collection Description Terms http://purl.org/cld/terms/								
Type of Term	Property								
Subproperty Of	dc:relation, Dublin Core Metadata Element Set, v1.1 http://purl.org/dc/elements/1.1/relation								
Source Label	Is Located At								
Label in this DCAP	[n/a]								
Source Definition	A location where the collection is held.								
Usage in this DCAP	[n/a]								
Comments for this DCAP	Either a value string or a value URI or both may be provided.								
Uses Vocabulary Encoding Scheme	[Not specified]								
	<table border="1"> <thead> <tr> <th>Value URI</th> <th>Value String</th> <th>Syntax Encoding Scheme(s)</th> <th>Rich Represent</th> </tr> </thead> <tbody> <tr> <td>Optional</td> <td>Optional</td> <td></td> <td>Not permitted</td> </tr> </tbody> </table>	Value URI	Value String	Syntax Encoding Scheme(s)	Rich Represent	Optional	Optional		Not permitted
Value URI	Value String	Syntax Encoding Scheme(s)	Rich Represent						
Optional	Optional		Not permitted						
Obligation	Optional								
Condition	[n/a]								
Minimum Occurrences	0								
Maximum Occurrences	unbounded								

Is Accessed Via [cld:isAccessedVia]

Property URI	http://purl.org/cld/terms/isAccessedVia
Qualified Name for Property	cld:isAccessedVia
Defined By	Collection Description Terms http://purl.org/cld/terms/
Type of Term	Property
Subproperty Of	dc:relation, Dublin Core Metadata Element Set, v1.1 http://purl.org/dc/elements/1.1/relation
Source Label	Is Accessed Via
Label in this DCAP	[n/a]
Source Definition	A service that provides access to the items within the collection.

Usage in this DCAP	[n/a]								
Comments for this DCAP	Either a value string or a value URI or both may be provided.								
Uses Vocabulary Encoding Scheme	[Not specified] <table border="1" data-bbox="395 309 1129 459"> <thead> <tr> <th>Value URI</th> <th>Value String</th> <th>Syntax Encoding Scheme(s)</th> <th>Rich Represent</th> </tr> </thead> <tbody> <tr> <td>Optional</td> <td>Optional</td> <td></td> <td>Not permitted</td> </tr> </tbody> </table>	Value URI	Value String	Syntax Encoding Scheme(s)	Rich Represent	Optional	Optional		Not permitted
Value URI	Value String	Syntax Encoding Scheme(s)	Rich Represent						
Optional	Optional		Not permitted						
Obligation	Optional								
Condition	[n/a]								
Minimum Occurrences	0								
Maximum Occurrences	unbounded								

Sub-Collection [dcterms:hasPart]

Property URI	http://purl.org/dc/terms/hasPart								
Qualified Name for Property	dcterms:hasPart								
Defined By	Dublin Core Terms http://purl.org/dc/terms/								
Type of Term	Property								
Subproperty Of	dc:relation, Dublin Core Metadata Element Set, v1.1 http://purl.org/dc/elements/1.1/relation								
Source Label	Has Part								
Label in this DCAP	Sub-Collection								
Source Definition	The described resource includes the referenced resource either physically or logically.								
Usage in this DCAP	A second collection contained within the current collection.								
Comments for this DCAP	Either a value string or a value URI or both may be provided.								
Uses Vocabulary Encoding Scheme	[Not specified] <table border="1" data-bbox="395 1348 1129 1498"> <thead> <tr> <th>Value URI</th> <th>Value String</th> <th>Syntax Encoding Scheme(s)</th> <th>Rich Represent</th> </tr> </thead> <tbody> <tr> <td>Optional</td> <td>Optional</td> <td></td> <td>Not permitted</td> </tr> </tbody> </table>	Value URI	Value String	Syntax Encoding Scheme(s)	Rich Represent	Optional	Optional		Not permitted
Value URI	Value String	Syntax Encoding Scheme(s)	Rich Represent						
Optional	Optional		Not permitted						
Obligation	Optional								
Condition	[n/a]								
Minimum Occurrences	0								
Maximum Occurrences	unbounded								

Super-Collection [dcterms:isPartOf]

Property URI	http://purl.org/dc/terms/isPartOf
Qualified Name for Property	dcterms:isPartOf
Defined By	Dublin Core Terms http://purl.org/dc/terms/
Type of Term	Property
Subproperty Of	dc:relation, Dublin Core Metadata Element Set, v1.1 http://purl.org/dc/elements/1.1/relation
Source Label	Is Part Of

Label in this DCAP	Super-Collection								
Source Definition	The described resource is a physical or logical part of the referenced resource.								
Usage in this DCAP	A second collection that contains the current collection.								
Comments for this DCAP	Either a value string or a value URI or both may be provided.								
Uses Vocabulary Encoding Scheme	[Not specified] <table border="1" data-bbox="395 394 1129 539"> <thead> <tr> <th>Value URI</th> <th>Value String</th> <th>Syntax Encoding Scheme(s)</th> <th>Rich Represent</th> </tr> </thead> <tbody> <tr> <td>Optional</td> <td>Optional</td> <td></td> <td>Not permitted</td> </tr> </tbody> </table>	Value URI	Value String	Syntax Encoding Scheme(s)	Rich Represent	Optional	Optional		Not permitted
Value URI	Value String	Syntax Encoding Scheme(s)	Rich Represent						
Optional	Optional		Not permitted						
Obligation	Optional								
Condition	[n/a]								
Minimum Occurrences	0								
Maximum Occurrences	unbounded								

Catalogue or Index [cld:catalogueOrIndex]

Property URI	http://purl.org/cld/terms/catalogueOrIndex								
Qualified Name for Property	cld:catalogueOrIndex								
Defined By	Collection Description Terms http://purl.org/cld/terms/								
Type of Term	Property								
Subproperty Of	dc:description, Dublin Core Metadata Element Set, v1.1 http://purl.org/dc/elements/1.1/description								
Source Label	Catalogue or Index								
Label in this DCAP	[n/a]								
Source Definition	A catalogue for, or index of, the collection								
Usage in this DCAP	[n/a]								
Comments for this DCAP	The second collection may be an analytic finding aid or indexing finding aid. Either a value string or a value URI or both may be provided.								
Uses Vocabulary Encoding Scheme	[Not specified] <table border="1" data-bbox="395 1473 1129 1619"> <thead> <tr> <th>Value URI</th> <th>Value String</th> <th>Syntax Encoding Scheme(s)</th> <th>Rich Represent</th> </tr> </thead> <tbody> <tr> <td>Optional</td> <td>Optional</td> <td></td> <td>Not permitted</td> </tr> </tbody> </table>	Value URI	Value String	Syntax Encoding Scheme(s)	Rich Represent	Optional	Optional		Not permitted
Value URI	Value String	Syntax Encoding Scheme(s)	Rich Represent						
Optional	Optional		Not permitted						
Obligation	Optional								
Condition	[n/a]								
Minimum Occurrences	0								
Maximum Occurrences	unbounded								

Associated collection [cld:associatedCollection]

Property URI	http://purl.org/cld/terms/associatedCollection
Qualified Name for Property	cld:associatedCollection
Defined By	Collection Description Terms http://purl.org/cld/terms/

Type of Term	Property								
Subproperty Of	dc:relation, Dublin Core Metadata Element Set, v1.1 http://purl.org/dc/elements/1.1/relation								
Source Label	Associated Collection								
Label in this DCAP	[n/a]								
Source Definition	A second collection that is associated with the current collection.								
Usage in this DCAP	Either a value string or a value URI or both may be provided.								
Label in this DCAP	[n/a]								
Uses Vocabulary Encoding Scheme	[Not specified]								
	<table border="1"> <thead> <tr> <th>Value URI</th> <th>Value String</th> <th>Syntax Encoding Scheme(s)</th> <th>Rich Represent</th> </tr> </thead> <tbody> <tr> <td>Optional</td> <td>Optional</td> <td></td> <td>Not permitted</td> </tr> </tbody> </table>	Value URI	Value String	Syntax Encoding Scheme(s)	Rich Represent	Optional	Optional		Not permitted
Value URI	Value String	Syntax Encoding Scheme(s)	Rich Represent						
Optional	Optional		Not permitted						
Obligation	Optional								
Condition	[n/a]								
Minimum Occurrences	0								
Maximum Occurrences	unbounded								

Associated publication [dcterms:isReferencedBy]

Property URI	http://purl.org/dc/terms/isReferencedBy								
Qualified Name for Property	dcterms:isReferencedBy								
Defined By	Dublin Core Terms http://purl.org/dc/terms/								
Type of Term	Property								
Subproperty Of	dc:relation, Dublin Core Metadata Element Set, v1.1 http://purl.org/dc/elements/1.1/relation								
Source Label	Is Referenced By								
Label in this DCAP	Associated publication								
Source Definition	The described resource is referenced, cited, or otherwise pointed to by the referenced resource.								
Usage in this DCAP	A publication that is based on the use, study, or analysis of the collection.								
Comments for this DCAP	Either a value string or a value URI or both may be provided. A human-readable citation for the publication should be provided; a machine-readable citation in the form of an OpenURL Context Object may be provided.								
Uses Vocabulary Encoding Scheme	[Not specified]								
	<table border="1"> <thead> <tr> <th>Value URI</th> <th>Value String</th> <th>Syntax Encoding Scheme(s)</th> <th>Rich Represent</th> </tr> </thead> <tbody> <tr> <td>Optional</td> <td>Optional</td> <td></td> <td>Not permitted</td> </tr> </tbody> </table>	Value URI	Value String	Syntax Encoding Scheme(s)	Rich Represent	Optional	Optional		Not permitted
Value URI	Value String	Syntax Encoding Scheme(s)	Rich Represent						
Optional	Optional		Not permitted						
Obligation	Optional								
Condition	[n/a]								
Minimum Occurrences	0								
Maximum Occurrences	unbounded								

Describing a Catalogue or Index

Class URI	http://purl.org/cld/cdtype/CatalogueOrIndex
------------------	---

Qualified Name for Class	cdtype:CatalogueOrIndex
Defined By	Collection Description Type Vocabulary http://purl.org/cld/cdtype/
Type of Term	Class
SubClass Of	[n/a]
Label	Catalogue or Index
Definition	A catalogue for, or index of, a collection
Comments	
See Also	An Analytical Model of Collections and their Catalogues http://www.ukoln.ac.uk/metadata/rsdp/model/

- [Type \[dc:type\]](#)
- [Catalogue or Index Identifier \[dc:identifier\]](#)
- [Title \[dc:title\]](#)
- [Description \[dcterms:abstract\]](#)
- [Catalogue or Index Type \[dc:type\]](#)
- [Size \[dcterms:extent\]](#)
- [Language \[dc:language\]](#)
- [Item Type \[cld:itemType\]](#)
- [Item Format \[cld:itemFormat\]](#)
- [Rights \[dc:rights\]](#)
- [Access Rights \[dcterms:accessRights\]](#)
- [Accrual Method \[dcterms:accrualMethod\]](#)
- [Accrual Periodicity \[dcterms:accrualPeriodicity\]](#)
- [Accrual Policy \[dcterms:accrualPolicy\]](#)
- [Custodial History \[dcterms:provenance\]](#)
- [Audience \[dcterms:audience\]](#)
- [Date Catalogue or Index Accumulated \[dcterms:created\]](#)
- [Date Items Created \[cld:dateItemsCreated\]](#)
- [Collector \[dc:creator\]](#)
- [Owner \[marcrel:OWN\]](#)
- [Is Located At \[cld:isLocatedAt\]](#)
- [Is Accessed Via \[cld:isAccessedVia\]](#)
- [Sub-Collection \[dcterms:hasPart\]](#)
- [Super-Collection \[dcterms:isPartOf\]](#)
- [Catalogue or Index \[cld:catalogueOrIndex\]](#)
- [Described Collection \[cld:describedCollection\]](#)

Type [dc:type]

Property URI	http://purl.org/dc/elements/1.1/type
Qualified Name for Property	dc:type
Defined By	The Dublin Core Metadata Element Set, v1.1 http://purl.org/dc/elements/1.1/
Type of Term	Property
Subproperty Of	[n/a]
Source Label	Type
Label in this DCAP	[n/a]
Source Definition	The nature or genre of the resource.
Usage in this DCAP	The nature or genre of the resource, i.e. cdtype:CatalogueOrIndex.
Comments for this DCAP	The statement must assert that the resource is of type cdtype:CatalogueOrIndex.

Uses Vocabulary Encoding Scheme	cld:CDType , Collection Description Terms http://purl.org/cld/terms/CDType			
	Value URI	Value String	Syntax Encoding Scheme(s)	Rich Represent
	Mandatory, Fixed cdtype: CatalogueOrIndex	Mandatory, Fixed CatalogueOrIndex		Not permitted
Obligation	Mandatory			
Condition	[n/a]			
Minimum Occurrences	1			
Maximum Occurrences	1			

Catalogue or Index Identifier [[dc:identifier](#)]

Property URI	http://purl.org/dc/elements/1.1/identifier			
Qualified Name for Property	dc:identifier			
Defined By	The Dublin Core Metadata Element Set, v1.1 http://purl.org/dc/elements/1.1/			
Type of Term	Property			
Subproperty Of	[n/a]			
Source Label	Resource Identifier			
Label in this DCAP	Catalogue or Index Identifier			
Source Definition	An unambiguous reference to the resource within a given context.			
Usage in this DCAP	A URI for the catalogue or index.			
Comments for this DCAP	<p>A catalogue or index identifier must be a URI, using a URI scheme that has been registered with IANA.</p> <p>The URI of the catalogue or index should be used as the resource URI of the description and also as the value string in a statement using the dc:identifier property.</p> <p>If multiple URIs are assigned to a catalogue or index, one of the URIs should be used as the resource URI, and each URI, including the resource URI, should be used as the value string in a separate statement using the dc:identifier property.</p>			
Uses Vocabulary Encoding Scheme	[Not specified]			
	Value URI	Value String	Syntax Encoding Scheme(s)	Rich Represent
	Not permitted	Mandatory	dcterms:URI	Not permitted
Obligation	Optional, but recommended.			
Condition	[n/a]			
Minimum Occurrences	0			
Maximum Occurrences	unbounded			

Title [[dc:title](#)]

Property URI	http://purl.org/dc/elements/1.1/title			
Qualified Name for Property	dc:title			
Defined By	The Dublin Core Metadata Element Set, v1.1 http://purl.org/dc/elements/1.1/			

Type of Term	Property								
Subproperty Of	[n/a]								
Source Label	Title								
Label in this DCAP	[n/a]								
Source Definition	A name given to the resource.								
Usage in this DCAP	The name of the catalogue or index.								
Comments for this DCAP	A value string must be provided. To record titles in multiple languages, use multiple statements and in each statement associate the value string with the appropriate language tag.								
Uses Vocabulary Encoding Scheme	[Not specified] <table border="1" data-bbox="399 593 1129 734"> <thead> <tr> <th>Value URI</th> <th>Value String</th> <th>Syntax Encoding Scheme(s)</th> <th>Rich Represent</th> </tr> </thead> <tbody> <tr> <td>Not permitted</td> <td>Mandatory</td> <td></td> <td>Not permitted</td> </tr> </tbody> </table>	Value URI	Value String	Syntax Encoding Scheme(s)	Rich Represent	Not permitted	Mandatory		Not permitted
Value URI	Value String	Syntax Encoding Scheme(s)	Rich Represent						
Not permitted	Mandatory		Not permitted						
Obligation	Mandatory								
Condition	[n/a]								
Minimum Occurrences	1								
Maximum Occurrences	unbounded								

Description [dcterms:abstract]

Property URI	http://purl.org/dc/terms/abstract								
Qualified Name for Property	dcterms:abstract								
Defined By	Dublin Core Terms http://purl.org/dc/terms/								
Type of Term	Property								
Subproperty Of	dc:description, Dublin Core Metadata Element Set, v1.1 http://purl.org/dc/elements/1.1/description								
Source Label	Abstract								
Label in this DCAP	Description								
Source Definition	A summary of the content of the resource.								
Usage in this DCAP	A free text summary description of the catalogue or index.								
Comments for this DCAP	A value string must be provided. To record descriptions in multiple languages, use multiple statements and in each statement associate the value string with the appropriate language tag.								
Uses Vocabulary Encoding Scheme	[Not specified] <table border="1" data-bbox="399 1697 1129 1839"> <thead> <tr> <th>Value URI</th> <th>Value String</th> <th>Syntax Encoding Scheme(s)</th> <th>Rich Represent</th> </tr> </thead> <tbody> <tr> <td>Not permitted</td> <td>Mandatory</td> <td></td> <td>Not permitted</td> </tr> </tbody> </table>	Value URI	Value String	Syntax Encoding Scheme(s)	Rich Represent	Not permitted	Mandatory		Not permitted
Value URI	Value String	Syntax Encoding Scheme(s)	Rich Represent						
Not permitted	Mandatory		Not permitted						
Obligation	Mandatory								
Condition	[n/a]								
Minimum Occurrences	1								
Maximum Occurrences	unbounded								

Catalogue or Index Type [dc:type]

Property URI	http://purl.org/dc/elements/1.1/type										
Qualified Name for Property	dc:type										
Defined By	The Dublin Core Metadata Element Set, v1.1 http://purl.org/dc/elements/1.1/										
Type of Term	Property										
Subproperty Of	[n/a]										
Source Label	Type										
Label in this DCAP	Catalogue or Index Type										
Source Definition	The nature or genre of the content of the resource.										
Usage in this DCAP	The type of the catalogue or index.										
Label in this DCAP	[n/a]										
Uses Vocabulary Encoding Scheme	cld:CDType , Collection Description Terms http://purl.org/cld/terms/CDType <table border="1" data-bbox="395 719 1129 864"> <thead> <tr> <th>Value URI</th> <th>Value String</th> <th>Syntax Encoding Scheme(s)</th> <th>Rich Represent</th> </tr> </thead> <tbody> <tr> <td>Optional</td> <td>Mandatory</td> <td></td> <td>Not permitted</td> </tr> </tbody> </table>			Value URI	Value String	Syntax Encoding Scheme(s)	Rich Represent	Optional	Mandatory		Not permitted
Value URI	Value String	Syntax Encoding Scheme(s)	Rich Represent								
Optional	Mandatory		Not permitted								
Obligation	Optional										
Condition	[n/a]										
Minimum Occurrences	0										
Maximum Occurrences	unbounded										

Size [dcterms:extent]

Property URI	http://purl.org/dc/terms/extent										
Qualified Name for Property	dcterms:extent										
Defined By	Dublin Core Terms http://purl.org/dc/terms/										
Type of Term	Property										
Subproperty Of	dc:format, Dublin Core Metadata Element Set, v1.1 http://purl.org/dc/elements/1.1/format										
Source Label	Extent										
Label in this DCAP	Size										
Source Definition	The size or duration of the resource.										
Usage in this DCAP	The size of the catalogue or index.										
Comments for this DCAP	A value string must be provided.										
Uses Vocabulary Encoding Scheme	[Not specified] <table border="1" data-bbox="395 1756 1129 1901"> <thead> <tr> <th>Value URI</th> <th>Value String</th> <th>Syntax Encoding Scheme(s)</th> <th>Rich Represent</th> </tr> </thead> <tbody> <tr> <td>Not permitted</td> <td>Mandatory</td> <td></td> <td>Not permitted</td> </tr> </tbody> </table>			Value URI	Value String	Syntax Encoding Scheme(s)	Rich Represent	Not permitted	Mandatory		Not permitted
Value URI	Value String	Syntax Encoding Scheme(s)	Rich Represent								
Not permitted	Mandatory		Not permitted								
Obligation	Optional										
Condition	[n/a]										
Minimum Occurrences	0										
Maximum Occurrences	unbounded										

Language [dc:language]

Property URI	http://purl.org/dc/elements/1.1/language										
Qualified Name for Property	dc:language										
Defined By	The Dublin Core Metadata Element Set, v1.1 http://purl.org/dc/elements/1.1/										
Type of Term	Property										
Subproperty Of	[n/a]										
Source Label	Language										
Label in this DCAP	[n/a]										
Source Definition	A language of the resource.										
Usage in this DCAP	A language of the content of the items in the catalogue or index.										
Comments for this DCAP	<p>A value string must be provided; a value URI may also be provided.</p> <p>The value string should be a language name in the form of the three character code defined by ISO 639-2.</p> <p>Where the catalogue or index covers multiple languages, a separate statement should be used for each language.</p>										
Uses Vocabulary Encoding Scheme	dcterms:ISO639-2 , Dublin Core Terms http://purl.org/dc/terms/ISO639-2 <table border="1" data-bbox="395 981 1129 1126"> <thead> <tr> <th>Value URI</th> <th>Value String</th> <th>Syntax Encoding Scheme(s)</th> <th>Rich Represent</th> </tr> </thead> <tbody> <tr> <td>Optional</td> <td>Mandatory</td> <td></td> <td>Not permitted</td> </tr> </tbody> </table>			Value URI	Value String	Syntax Encoding Scheme(s)	Rich Represent	Optional	Mandatory		Not permitted
Value URI	Value String	Syntax Encoding Scheme(s)	Rich Represent								
Optional	Mandatory		Not permitted								
Obligation	Optional										
Condition	[n/a]										
Minimum Occurrences	0										
Maximum Occurrences	unbounded										

Item Type [cld:itemType]

Property URI	http://purl.org/cld/terms/itemType		
Qualified Name for Property	cld:itemType		
Defined By	Collection Description Terms http://purl.org/cld/terms/		
Type of Term	Property		
Subproperty Of	[n/a]		
Source Label	Item Type		
Label in this DCAP	[n/a]		
Source Definition	The nature or genre of one or more items within the collection.		
Usage in this DCAP	The nature or genre of one or more items within the catalogue or index.		
Comments for this DCAP	<p>A value string must be provided; a value URI may also be provided.</p> <p>Where the catalogue or index includes items of multiple types, a separate statement should be used for each type which is regarded as significant for a user of the catalogue or index description.</p>		

Uses Vocabulary Encoding Scheme	dcterms:DCMIType , Dublin Core Terms http://purl.org/dc/terms/DCMIType			
	Value URI	Value String	Syntax Encoding Scheme(s)	Rich Represent
	Optional	Mandatory		Not permitted
Obligation	Optional			
Condition	[n/a]			
Minimum Occurrences	0			
Maximum Occurrences	unbounded			

Item Format [cld:itemFormat]

Property URI	http://purl.org/cld/terms/itemFormat			
Qualified Name for Property	cld:itemFormat			
Defined By	Collection Description Terms http://purl.org/cld/terms/			
Type of Term	Property			
Subproperty Of	[n/a]			
Source Label	Item Format			
Label in this DCAP	[n/a]			
Source Definition	The media type, physical or digital, of one or more items within the catalogue or index.			
Usage in this DCAP	[n/a]			
Comments for this DCAP	<p>A value string must be provided; a value URI may also be provided.</p> <p>Where the catalogue or index includes items of multiple media types, a separate statement should be used for each media type which is regarded as significant for a user of the catalogue or index description.</p>			
Uses Vocabulary Encoding Scheme	[Not specified]			
	Value URI	Value String	Syntax Encoding Scheme(s)	Rich Represent
	Optional	Mandatory		Not permitted
Obligation	Optional			
Condition	[n/a]			
Minimum Occurrences	0			
Maximum Occurrences	unbounded			

Rights [dc:rights]

Property URI	http://purl.org/dc/elements/1.1/rights			
Qualified Name for Property	dc:rights			
Defined By	The Dublin Core Metadata Element Set, v1.1 http://purl.org/dc/elements/1.1/			
Type of Term	Property			
Subproperty Of	[n/a]			
Source Label	Rights			
Label in this DCAP	[n/a]			

Source Definition	Information about rights held in and over the resource.								
Usage in this DCAP	A statement of any rights held in/over the catalogue or index.								
Comments for this DCAP	Either a value string or a value URI or both may be provided. To record information in multiple languages, use a single statement with multiple value strings and associate each value string with the appropriate language tag.								
Uses Vocabulary Encoding Scheme	[Not specified] <table border="1" data-bbox="395 427 1129 573"> <thead> <tr> <th>Value URI</th> <th>Value String</th> <th>Syntax Encoding Scheme(s)</th> <th>Rich Represent</th> </tr> </thead> <tbody> <tr> <td>Optional</td> <td>Optional</td> <td></td> <td>Not permitted</td> </tr> </tbody> </table>	Value URI	Value String	Syntax Encoding Scheme(s)	Rich Represent	Optional	Optional		Not permitted
Value URI	Value String	Syntax Encoding Scheme(s)	Rich Represent						
Optional	Optional		Not permitted						
Obligation	Optional								
Condition	[n/a]								
Minimum Occurrences	0								
Maximum Occurrences	unbounded								

Access Rights [dcterms:accessRights]

Property URI	http://purl.org/dc/terms/accessRights								
Qualified Name for Property	dcterms:accessRights								
Defined By	Dublin Core Terms http://purl.org/dc/terms/								
Type of Term	Property								
Subproperty Of	dc:rights, Dublin Core Metadata Element Set, v1.1 http://purl.org/dc/elements/1.1/rights								
Source Label	Access Rights								
Label in this DCAP	[n/a]								
Source Definition	Information about who can access the resource or an indication of its security status.								
Usage in this DCAP	A statement of any access restrictions placed on the catalogue or index, including allowed users, charges, etc.								
Comments for this DCAP	Either a value string or a value URI or both may be provided. To record information in multiple languages, use a single statement with multiple value strings and associate each value string with the appropriate language tag.								
Uses Vocabulary Encoding Scheme	[Not specified] <table border="1" data-bbox="395 1563 1129 1709"> <thead> <tr> <th>Value URI</th> <th>Value String</th> <th>Syntax Encoding Scheme(s)</th> <th>Rich Represent</th> </tr> </thead> <tbody> <tr> <td>Optional</td> <td>Optional</td> <td></td> <td>Not permitted</td> </tr> </tbody> </table>	Value URI	Value String	Syntax Encoding Scheme(s)	Rich Represent	Optional	Optional		Not permitted
Value URI	Value String	Syntax Encoding Scheme(s)	Rich Represent						
Optional	Optional		Not permitted						
Obligation	Optional								
Condition	[n/a]								
Minimum Occurrences	0								
Maximum Occurrences	unbounded								

Accrual Method [dcterms:accrualMethod]

Property URI	http://purl.org/dc/terms/accrualMethod
Qualified Name for Property	dcterms:accrualMethod

Defined By	Dublin Core Terms http://purl.org/dc/terms/								
Type of Term	Property								
Subproperty Of	[n/a]								
Source Label	Accrual Method								
Label in this DCAP	[n/a]								
Source Definition	A method by which items are added to a collection.								
Usage in this DCAP	A method by which items are added to a catalogue or index.								
Comments for this DCAP	Recommended best practice is to use a value from the Collection Description Accrual Method vocabulary encoding scheme. A value string must be provided; a value URI may also be provided. Where multiple methods apply, a separate statement should be used for each method.								
Uses Vocabulary Encoding Scheme	cld:AccrualMethod , Collection Description Terms http://purl.org/cld/terms/AccrualMethod <table border="1" data-bbox="395 763 1129 909"> <thead> <tr> <th>Value URI</th> <th>Value String</th> <th>Syntax Encoding Scheme(s)</th> <th>Rich Represent</th> </tr> </thead> <tbody> <tr> <td>Optional</td> <td>Mandatory</td> <td></td> <td>Not permitted</td> </tr> </tbody> </table>	Value URI	Value String	Syntax Encoding Scheme(s)	Rich Represent	Optional	Mandatory		Not permitted
Value URI	Value String	Syntax Encoding Scheme(s)	Rich Represent						
Optional	Mandatory		Not permitted						
Obligation	Optional								
Condition	[n/a]								
Minimum Occurrences	0								
Maximum Occurrences	unbounded								

Accrual Periodicity [[dcterms:accrualPeriodicity](#)]

Property URI	http://purl.org/dc/terms/accrualPeriodicity								
Qualified Name for Property	dcterms:accrualPeriodicity								
Defined By	Dublin Core Terms http://purl.org/dc/terms/								
Type of Term	Property								
Subproperty Of	[n/a]								
Source Label	Accrual Periodicity								
Label in this DCAP	[n/a]								
Source Definition	A frequency with which items are added to a collection.								
Usage in this DCAP	A frequency with which items are added to a catalogue or index.								
Comments for this DCAP	Recommended best practice is to use a value from the Collection Description Frequency vocabulary encoding scheme. A value string must be provided; a value URI may also be provided.								
Uses Vocabulary Encoding Scheme	cld:Frequency , Collection Description Terms http://purl.org/cld/terms/Frequency <table border="1" data-bbox="395 1877 1129 2022"> <thead> <tr> <th>Value URI</th> <th>Value String</th> <th>Syntax Encoding Scheme(s)</th> <th>Rich Represent</th> </tr> </thead> <tbody> <tr> <td>Optional</td> <td>Mandatory</td> <td></td> <td>Not permitted</td> </tr> </tbody> </table>	Value URI	Value String	Syntax Encoding Scheme(s)	Rich Represent	Optional	Mandatory		Not permitted
Value URI	Value String	Syntax Encoding Scheme(s)	Rich Represent						
Optional	Mandatory		Not permitted						
Obligation	Optional								
Condition	[n/a]								

Minimum Occurrences	0
Maximum Occurrences	unbounded

Accrual Policy [dcterms:accrualPolicy]

Property URI	http://purl.org/dc/terms/accrualPolicy										
Qualified Name for Property	dcterms:accrualPolicy										
Defined By	Dublin Core Terms http://purl.org/dc/terms/										
Type of Term	Property										
Subproperty Of	[n/a]										
Source Label	Accrual Policy										
Label in this DCAP	[n/a]										
Source Definition	A policy governing the addition of items to a collection.										
Usage in this DCAP	A policy governing the addition of items to a catalogue or index.										
Comments for this DCAP	<p>Recommended best practice is to use a value from the Collection Description Accrual Policy vocabulary encoding scheme.</p> <p>A value string must be provided; a value URI may also be provided.</p> <p>Where multiple policies apply, a separate statement should be used for each policy.</p>										
Uses Vocabulary Encoding Scheme	<p>cld:AccrualPolicy, Collection Description Terms http://purl.org/cld/terms/CollectionDescriptionTerms</p> <table border="1"> <thead> <tr> <th>Value URI</th> <th>Value String</th> <th>Syntax Encoding Scheme(s)</th> <th>Rich Represent</th> </tr> </thead> <tbody> <tr> <td>Optional</td> <td>Mandatory</td> <td></td> <td>Not permitted</td> </tr> </tbody> </table>			Value URI	Value String	Syntax Encoding Scheme(s)	Rich Represent	Optional	Mandatory		Not permitted
Value URI	Value String	Syntax Encoding Scheme(s)	Rich Represent								
Optional	Mandatory		Not permitted								
Obligation	Optional										
Condition	[n/a]										
Minimum Occurrences	0										
Maximum Occurrences	unbounded										

Custodial History [dcterms:provenance]

Property URI	http://purl.org/dc/terms/provenance		
Qualified Name for Property	dcterms:provenance		
Defined By	Dublin Core Terms http://purl.org/dc/terms/		
Type of Term	Property		
Subproperty Of	[n/a]		
Source Label	Provenance		
Label in this DCAP	Custodial History		
Source Definition	A statement of any changes in ownership and custody of the resource since its creation that are significant for its authenticity, integrity and interpretation.		
Usage in this DCAP	A statement of any changes in ownership and custody of the catalogue or index that are significant for its authenticity, integrity and interpretation.		

Comments for this DCAP	<p>Either a value string or a value URI or both may be provided.</p> <p>To record information in multiple languages, use a single statement with multiple value strings and associate each value string with the appropriate language tag.</p>											
Uses Vocabulary Encoding Scheme	<p>[Not specified]</p> <table border="1"> <thead> <tr> <th>Value URI</th> <th>Value String</th> <th>Syntax Encoding Scheme(s)</th> <th>Rich Represent</th> </tr> </thead> <tbody> <tr> <td>Optional</td> <td>Mandatory</td> <td></td> <td>Not permitted</td> </tr> </tbody> </table>				Value URI	Value String	Syntax Encoding Scheme(s)	Rich Represent	Optional	Mandatory		Not permitted
Value URI	Value String	Syntax Encoding Scheme(s)	Rich Represent									
Optional	Mandatory		Not permitted									
Obligation	Optional											
Condition	[n/a]											
Minimum Occurrences	0											
Maximum Occurrences	unbounded											

Audience [dcterms:audience]

Property URI	http://purl.org/dc/terms/audience											
Qualified Name for Property	dcterms:audience											
Defined By	Dublin Core Terms http://purl.org/dc/terms/											
Type of Term	Property											
Subproperty Of	[n/a]											
Source Label	Audience											
Label in this DCAP	[n/a]											
Source Definition	A class of entity for whom the resource is intended or useful.											
Usage in this DCAP	A class of entity for whom the catalogue or index is intended or useful.											
Comments for this DCAP	<p>A value string must be provided; a value URI may also be provided.</p> <p>Where a catalogue or index is intended or useful for multiple audiences, a separate statement should be used for each audience.</p>											
Uses Vocabulary Encoding Scheme	<p>[Not specified]</p> <table border="1"> <thead> <tr> <th>Value URI</th> <th>Value String</th> <th>Syntax Encoding Scheme(s)</th> <th>Rich Represent</th> </tr> </thead> <tbody> <tr> <td>Optional</td> <td>Mandatory</td> <td></td> <td>Not permitted</td> </tr> </tbody> </table>				Value URI	Value String	Syntax Encoding Scheme(s)	Rich Represent	Optional	Mandatory		Not permitted
Value URI	Value String	Syntax Encoding Scheme(s)	Rich Represent									
Optional	Mandatory		Not permitted									
Obligation	Optional											
Condition	[n/a]											
Minimum Occurrences	0											
Maximum Occurrences	unbounded											

Dates Catalogue or Index Accumulated [dcterms:created]

Property URI	http://purl.org/dc/terms/created			
Qualified Name for Property	dcterms:created			
Defined By	Dublin Core Terms http://purl.org/dc/terms/			
Type of Term	Property			

Subproperty Of	dc:date, Dublin Core Metadata Element Set, v1.1 http://purl.org/dc/elements/1.1/date								
Source Label	Created								
Label in this DCAP	Dates Collection Accumulated								
Source Definition	Date of creation of the resource.								
Usage in this DCAP	A range of dates over which the catalogue or index was accumulated.								
Comments for this DCAP	<p>A value string must be provided.</p> <p>A date range should be supplied in the form described by RKMS-ISO8601. Start dates and end dates should be in the form of a date or date-time combination as specified by W3CDTF. Start dates and end dates should be separated by a solidus (forward slash) (/). Either the start date or the end date may be omitted to indicate an open-ended date range.</p> <p>All the following are examples of RKMS-ISO8601 date ranges:</p> <p style="text-align: center;">1888/1894 1960/ /1960 2000-02/2000-06-18</p> <p>indicating, '1888 to 1894', '1960 onwards', 'up until 1960' and 'February 2000 to 18 June 2000' respectively.</p> <p>Where multiple ranges are required, a separate statement should be used for each range.</p>								
Uses Vocabulary Encoding Scheme	<p>[Not specified]</p> <table border="1" style="margin-left: auto; margin-right: auto;"> <thead> <tr> <th>Value URI</th> <th>Value String</th> <th>Syntax Encoding Scheme(s)</th> <th>Rich Represent</th> </tr> </thead> <tbody> <tr> <td>Optional</td> <td>Mandatory</td> <td>cld:RKMS-ISO8601</td> <td>Not permitted</td> </tr> </tbody> </table>	Value URI	Value String	Syntax Encoding Scheme(s)	Rich Represent	Optional	Mandatory	cld:RKMS-ISO8601	Not permitted
Value URI	Value String	Syntax Encoding Scheme(s)	Rich Represent						
Optional	Mandatory	cld:RKMS-ISO8601	Not permitted						
Obligation	Optional								
Condition	[n/a]								
Minimum Occurrences	0								
Maximum Occurrences	unbounded								

Dates Items Created [[cld:dateItemsCreated](#)]

Property URI	http://purl.org/cld/terms/dateItemsCreated
Qualified Name for Property	cld:dateItemsCreated
Defined By	Collection Description Terms http://purl.org/cld/terms/
Type of Term	Property
Subproperty Of	dc:date, Dublin Core Metadata Element Set, v1.1 http://purl.org/dc/elements/1.1/date
Source Label	Date Items Created
Label in this DCAP	[n/a]
Source Definition	A range of dates over which the individual items within the collection were created.
Usage in this DCAP	A range of dates over which the individual items within the catalogue or index were created.

Comments for this DCAP	<p>A value string must be provided.</p> <p>A date range should be supplied in the form described by RKMS-ISO8601. Start dates and end dates should be in the form of a date or date-time combination as specified by W3CDTF. Start dates and end dates should be separated by a solidus (forward slash) (/). Either the start date or the end date may be omitted to indicate an open-ended date range.</p> <p>All the following are examples of RKMS-ISO8601 date ranges:</p> <p style="text-align: center;">1888/1894 1960/ /1960 2000-02/2000-06-18</p> <p>indicating, '1888 to 1894', '1960 onwards', 'up until 1960' and 'February 2000 to 18 June 2000' respectively.</p> <p>Where multiple ranges are required, a separate statement should be used for each range.</p>			
Uses Vocabulary Encoding Scheme	[Not specified]			
	Value URI	Value String	Syntax Encoding Scheme(s)	Rich Represent
	Optional	Mandatory	cld:RKMS-ISO8601	Not permitted
Obligation	Optional			
Condition	[n/a]			
Minimum Occurrences	0			
Maximum Occurrences	unbounded			

Collector [dc:creator]

Property URI	http://purl.org/dc/elements/1.1/creator			
Qualified Name for Property	dc:creator			
Defined By	The Dublin Core Metadata Element Set, v1.1 http://purl.org/dc/elements/1.1/			
Type of Term	Property			
Subproperty Of	[n/a]			
Source Label	Creator			
Label in this DCAP	Collector			
Source Definition	An entity primarily responsible for making the resource.			
Usage in this DCAP	An entity who gathers (or gathered) the items in a catalogue or index together.			
Comments for this DCAP	<p>A value string must be provided; a value URI may also be provided.</p> <p>The value string should be the name of the entity.</p>			
Uses Vocabulary Encoding Scheme	[Not specified]			
	Value URI	Value String	Syntax Encoding Scheme(s)	Rich Represent
	Optional	Mandatory		Not permitted
Obligation	Optional			
Condition	[n/a]			

Minimum Occurrences	0
Maximum Occurrences	unbounded

Owner [marcrel:OWN]

Property URI	http://www.loc.gov/loc.terms/relators/OWN		
Qualified Name for Property	marcrel:OWN		
Defined By	MARC Relator Codes http://www.loc.gov/loc.terms/relators/		
Type of Term	Property		
Subproperty Of	[n/a]		
Source Label	Owner		
Label in this DCAP	[n/a]		
Source Definition	The person or organization that currently owns an item or collection.		
Usage in this DCAP	An entity who has legal possession of the catalogue or index.		
Comments for this DCAP	A value string must be provided; a value URI may also be provided. The value string should be the name of the entity.		
Uses Vocabulary Encoding Scheme	[Not specified]		
	Value URI	Value String	Syntax Encoding Scheme(s)
	Optional	Mandatory	Not permitted
Obligation	Optional		
Condition	[n/a]		
Minimum Occurrences	0		
Maximum Occurrences	unbounded		

Is Located At [cld:isLocatedAt]

Property URI	http://purl.org/cld/terms/isLocatedAt		
Qualified Name for Property	cld:isLocatedAt		
Defined By	Collection Description Terms http://purl.org/cld/terms/		
Type of Term	Property		
Subproperty Of	dc:relation, Dublin Core Metadata Element Set, v1.1 http://purl.org/dc/elements/1.1/relation		
Source Label	Is Located At		
Label in this DCAP	[n/a]		
Source Definition	A location where the collection is held.		
Usage in this DCAP	A location where the catalogue or index is held.		
Comments for this DCAP	Either a value string or a value URI or both may be provided.		

Uses Vocabulary Encoding Scheme	[Not specified]								
	<table border="1"> <thead> <tr> <th>Value URI</th> <th>Value String</th> <th>Syntax Encoding Scheme(s)</th> <th>Rich Represent</th> </tr> </thead> <tbody> <tr> <td>Optional</td> <td>Optional</td> <td></td> <td>Not permitted</td> </tr> </tbody> </table>	Value URI	Value String	Syntax Encoding Scheme(s)	Rich Represent	Optional	Optional		Not permitted
Value URI	Value String	Syntax Encoding Scheme(s)	Rich Represent						
Optional	Optional		Not permitted						
Obligation	Optional								
Condition	[n/a]								
Minimum Occurrences	0								
Maximum Occurrences	unbounded								

Is Accessed Via [cld:isAccessedVia]

Property URI	http://purl.org/cld/terms/isAccessedVia								
Qualified Name for Property	cld:isAccessedVia								
Defined By	Collection Description Terms http://purl.org/cld/terms/								
Type of Term	Property								
Subproperty Of	dc:relation, Dublin Core Metadata Element Set, v1.1 http://purl.org/dc/elements/1.1/relation								
Source Label	Is Accessed Via								
Label in this DCAP	[n/a]								
Source Definition	A service that provides access to the items within the collection.								
Usage in this DCAP	A service that provides access to the items within the catalogue or index.								
Comments for this DCAP	Either a value string or a value URI or both may be provided.								
Uses Vocabulary Encoding Scheme	[Not specified]								
	<table border="1"> <thead> <tr> <th>Value URI</th> <th>Value String</th> <th>Syntax Encoding Scheme(s)</th> <th>Rich Represent</th> </tr> </thead> <tbody> <tr> <td>Optional</td> <td>Optional</td> <td></td> <td>Not permitted</td> </tr> </tbody> </table>	Value URI	Value String	Syntax Encoding Scheme(s)	Rich Represent	Optional	Optional		Not permitted
Value URI	Value String	Syntax Encoding Scheme(s)	Rich Represent						
Optional	Optional		Not permitted						
Obligation	Optional								
Condition	[n/a]								
Minimum Occurrences	0								
Maximum Occurrences	unbounded								

Sub-Collection [dcterms:hasPart]

Property URI	http://purl.org/dc/terms/hasPart
Qualified Name for Property	dcterms:hasPart
Defined By	Dublin Core Terms http://purl.org/dc/terms/
Type of Term	Property
Subproperty Of	dc:relation, Dublin Core Metadata Element Set, v1.1 http://purl.org/dc/elements/1.1/relation
Source Label	Has Part
Label in this DCAP	Sub-Collection
Source Definition	The described resource includes the referenced resource either physically or logically.

Usage in this DCAP	A second catalogue or index contained within the current catalogue or index.			
Comments for this DCAP	Either a value string or a value URI or both may be provided.			
Uses Vocabulary Encoding Scheme	[Not specified]			
	Value URI	Value String	Syntax Encoding Scheme(s)	Rich Represent
	Optional	Optional		Not permitted
Obligation	Optional			
Condition	[n/a]			
Minimum Occurrences	0			
Maximum Occurrences	unbounded			

Super-Collection [dcterms:isPartOf]

Property URI	http://purl.org/dc/terms/isPartOf			
Qualified Name for Property	dcterms:isPartOf			
Defined By	Dublin Core Terms http://purl.org/dc/terms/			
Type of Term	Property			
Subproperty Of	dc:relation, Dublin Core Metadata Element Set, v1.1 http://purl.org/dc/elements/1.1/relation			
Source Label	Is Part Of			
Label in this DCAP	Super-Collection			
Source Definition	The described resource is a physical or logical part of the referenced resource.			
Usage in this DCAP	A second catalogue or index that contains the current catalogue or index.			
Comments for this DCAP	Either a value string or a value URI or both may be provided.			
Uses Vocabulary Encoding Scheme	[Not specified]			
	Value URI	Value String	Syntax Encoding Scheme(s)	Rich Represent
	Optional	Optional		Not permitted
Obligation	Optional			
Condition	[n/a]			
Minimum Occurrences	0			
Maximum Occurrences	unbounded			

Catalogue or Index [cld:catalogueOrIndex]

Property URI	http://purl.org/cld/terms/catalogueOrIndex			
Qualified Name for Property	cld:catalogueOrIndex			
Defined By	Collection Description Terms http://purl.org/cld/terms/			
Type of Term	Property			
Subproperty Of	dc:description, Dublin Core Metadata Element Set, v1.1 http://purl.org/dc/elements/1.1/description			
Source Label	Catalogue or Index			

Label in this DCAP	[n/a]								
Source Definition	A second collection that describes the current collection.								
Usage in this DCAP	A second catalogue or index that describes the current catalogue or index.								
Comments for this DCAP	The second catalogue or index may be an analytic finding aid, hierarchic finding aid or indexing finding aid. Either a value string or a value URI or both may be provided.								
Uses Vocabulary Encoding Scheme	[Not specified] <table border="1" data-bbox="395 465 1129 611"> <thead> <tr> <th>Value URI</th> <th>Value String</th> <th>Syntax Encoding Scheme(s)</th> <th>Rich Represent</th> </tr> </thead> <tbody> <tr> <td>Optional</td> <td>Optional</td> <td></td> <td>Not permitted</td> </tr> </tbody> </table>	Value URI	Value String	Syntax Encoding Scheme(s)	Rich Represent	Optional	Optional		Not permitted
Value URI	Value String	Syntax Encoding Scheme(s)	Rich Represent						
Optional	Optional		Not permitted						
Obligation	Optional								
Condition	[n/a]								
Minimum Occurrences	0								
Maximum Occurrences	unbounded								

Described Collection [cld:describedCollection]

Property URI	http://purl.org/cld/terms/catalogueOrIndex								
Qualified Name for Property	cld:catalogueOrIndex								
Defined By	Collection Description Terms http://purl.org/cld/terms/								
Type of Term	Property								
Subproperty Of	dc:relation, Dublin Core Metadata Element Set, v1.1 http://purl.org/dc/elements/1.1/relation								
Source Label	Described Collection								
Label in this DCAP	[n/a]								
Source Definition	A second collection that is described by the current collection.								
Usage in this DCAP	A second collection that is described by the catalogue or index.								
Comments for this DCAP	Either a value string or a value URI or both may be provided.								
Uses Vocabulary Encoding Scheme	[Not specified] <table border="1" data-bbox="395 1503 1129 1648"> <thead> <tr> <th>Value URI</th> <th>Value String</th> <th>Syntax Encoding Scheme(s)</th> <th>Rich Represent</th> </tr> </thead> <tbody> <tr> <td>Optional</td> <td>Optional</td> <td></td> <td>Not permitted</td> </tr> </tbody> </table>	Value URI	Value String	Syntax Encoding Scheme(s)	Rich Represent	Optional	Optional		Not permitted
Value URI	Value String	Syntax Encoding Scheme(s)	Rich Represent						
Optional	Optional		Not permitted						
Obligation	Mandatory								
Condition	[n/a]								
Minimum Occurrences	1								
Maximum Occurrences	1								

Vocabulary Encoding Schemes Used

- [DCMI Type Vocabulary \[dcterms:DCMIType\]](#)
- [ISO 639-2 \[dcterms:ISO639-2\]](#)
- [Collection Description Type Vocabulary \[cld:CDType\]](#)
- [Collection Description Accrual Method Vocabulary \[cld:AccrualMethod\]](#)
- [Collection Description Frequency Vocabulary \[cld:Frequency\]](#)

- [Collection Description Accrual Policy Vocabulary \[cld:AccrualPolicy\]](#)
- [Library of Congress Subject Headings \[dcterms:LCSH\]](#)
- [Library of Congress Classification \[dcterms:LCC\]](#)
- [Medical Subject Headings \[dcterms:MESH\]](#)
- [Dewey Decimal Classification \[dcterms:DDC\]](#)
- [Universal Decimal Classification \[dcterms:UDC\]](#)

DCMIType [dcterms:DCMIType]

Vocabulary Encoding Scheme URI	http://purl.org/dc/terms/DCMIType
Qualified Name	dcterms:DCMIType
Defined By	Dublin Core Terms http://purl.org/dc/terms/
Type of Term	Vocabulary Encoding Scheme
Label	DCMI Type Vocabulary
Definition	A list of types used to categorize the nature or genre of the content of the resource.
Label in this DCAP	[n/a]
See Also	http://dublincore.org/documents/dcmi-type-vocabulary/
Used as Vocabulary Encoding Scheme For	Collection [dcmitype:Collection] dc:type , Dublin Core Metadata Element Set, v1.1 http://purl.org/dc/elements/1.1/type
Used as Vocabulary Encoding Scheme For	Collection [dcmitype:Collection] cld:itemType , Collection Description Terms http://purl.org/cld/terms/
Used as Vocabulary Encoding Scheme For	Catalogue or Index [cdtype:CollectionDescription] cld:itemType , Collection Description Terms http://purl.org/cld/terms/

ISO639-2 [dcterms:ISO639-2]

Vocabulary Encoding Scheme URI	http://purl.org/dc/terms/ISO639-2
Qualified Name	dcterms:ISO639-2
Defined By	Dublin Core Terms http://purl.org/dc/terms/
Type of Term	Vocabulary Encoding Scheme
Label	ISO 639-2
Definition	ISO 639-2: Codes for the representation of names of languages.
Label in this DCAP	[n/a]
See Also	http://www.loc.gov/standards/iso639-2/
Used as Vocabulary Encoding Scheme For	Collection [dcmitype:Collection] dc:language , Dublin Core Metadata Element Set, v1.1 http://purl.org/dc/elements/1.1/language
Used as Vocabulary Encoding Scheme For	Catalogue or Index [cdtype:CollectionDescription] dc:language , Dublin Core Metadata Element Set, v1.1 http://purl.org/dc/elements/1.1/language

Collection Description Accrual Method Vocabulary [cld:AccrualMethod]

Vocabulary Encoding Scheme URI	http://purl.org/cld/terms/AccrualMethod
Qualified Name	cld:AccrualMethod

Defined By	Collection Description Terms http://purl.org/cld/terms/
Type of Term	Vocabulary Encoding Scheme
Label	Collection Description Accrual Method Vocabulary
Definition	A set of methods by which items are added to a collection.
Label in this DCAP	[n/a]
See Also	http://dublincore.org/groups/collections/accrual-method/
See Also	http://purl.org/cld/accmeth/
Used as Vocabulary Encoding Scheme For	Collection [dcmitype:Collection] dcterms:accrualMethod , Dublin Core Terms http://purl.org/dc/terms/accrualMethod
Used as Vocabulary Encoding Scheme For	Catalogue or Index [cdtype:CollectionDescription] dcterms:accrualMethod , Dublin Core Terms http://purl.org/dc/terms/accrualMethod

Collection Description Frequency Vocabulary [cld:Frequency]

Vocabulary Encoding Scheme URI	http://purl.org/cld/terms/Frequency
Qualified Name	cld:Frequency
Defined By	Collection Description Terms http://purl.org/cld/terms/
Type of Term	Vocabulary Encoding Scheme
Label	Collection Description Frequency Vocabulary
Definition	A set of frequencies with which a repeatable event occurs.
Label in this DCAP	[n/a]
See Also	http://dublincore.org/groups/collections/frequency/
See Also	http://purl.org/cld/freq/
Used as Vocabulary Encoding Scheme For	Collection [dcmitype:Collection] dcterms:accrualPeriodicity , Dublin Core Terms http://purl.org/dc/terms/accrualPeriodicity
Used as Vocabulary Encoding Scheme For	Catalogue or Index [cdtype:CollectionDescription] dcterms:accrualPeriodicity , Dublin Core Terms http://purl.org/dc/terms/accrualPeriodicity

Collection Description Accrual Policy Vocabulary [cld:AccrualPolicy]

Vocabulary Encoding Scheme URI	http://purl.org/cld/terms/AccrualPolicy
Qualified Name	cld:AccrualPolicy
Defined By	Collection Description Terms http://purl.org/cld/terms/
Type of Term	Vocabulary Encoding Scheme
Label	Collection Description Accrual Policy Vocabulary
Definition	A set of policies governing the addition of items are added to a collection.
Label in this DCAP	[n/a]
See Also	http://dublincore.org/groups/collections/accrual-policy/
See Also	http://purl.org/cld/accpol/
Used as Vocabulary Encoding Scheme For	Collection [dcmitype:Collection] dcterms:accrualPolicy , Dublin Core Terms http://purl.org/dc/terms/accrualPolicy

Used as Vocabulary Encoding Scheme For	Catalogue or Index [cdtype:CollectionDescription] dcterms:accrualPolicy , Dublin Core Terms http://purl.org/dc/terms/accrualPolicy
--	---

Library of Congress Subject Headings (LCSH) [dcterms:LCSH]

Vocabulary Encoding Scheme URI	http://purl.org/dc/terms/LCSH
Qualified Name	dcterms:LCSH
Defined By	Dublin Core Terms http://purl.org/dc/terms/
Type of Term	Vocabulary Encoding Scheme
Label	LCSH
Definition	Library of Congress Subject Headings.
Label in this DCAP	[n/a]
See Also	http://lcweb.loc.gov/cds/lcsh.html
Used as Vocabulary Encoding Scheme For	Collection [dcmitype:Collection] dc:subject , Dublin Core Metadata Element Set, v1.1 http://purl.org/dc/elements/1.1/subject

Library of Congress Classification (LCC) [dcterms:LCC]

Vocabulary Encoding Scheme URI	http://purl.org/dc/terms/LCC
Qualified Name	dcterms:LCC
Defined By	Dublin Core Terms http://purl.org/dc/terms/
Type of Term	Vocabulary Encoding Scheme
Label	LCC
Definition	Library of Congress Classification.
Label in this DCAP	[n/a]
See Also	http://lcweb.loc.gov/catdir/cpsolcco/lcco.html
Used as Vocabulary Encoding Scheme For	Collection [dcmitype:Collection] dc:subject , Dublin Core Metadata Element Set, v1.1 http://purl.org/dc/elements/1.1/subject

Medical Subject Headings (MESH) [dcterms:MESH]

Vocabulary Encoding Scheme URI	http://purl.org/dc/terms/MESH
Qualified Name	dcterms:MESH
Type of Term	Vocabulary Encoding Scheme
Defined By	Dublin Core Terms http://purl.org/dc/terms/
Label	MeSH
Definition	Medical Subject Headings.
Label in this DCAP	[n/a]
See Also	http://www.nlm.nih.gov/mesh/meshhome.html
Used as Vocabulary Encoding Scheme For	Collection [dcmitype:Collection] dc:subject , Dublin Core Metadata Element Set, v1.1 http://purl.org/dc/elements/1.1/subject

Dewey Decimal Classification (DDC) [dcterms:DDC]

Vocabulary Encoding Scheme URI	http://purl.org/dc/terms/DDC
Qualified Name	dcterms:DDC
Defined By	Dublin Core Terms http://purl.org/dc/terms/
Type of Term	Vocabulary Encoding Scheme
Label	DDC
Definition	Dewey Decimal Classification.
Label in this DCAP	[n/a]
See Also	http://www.oclc.org/dewey/
Used as Vocabulary Encoding Scheme For	Collection [dcmitype:Collection] dc:subject , Dublin Core Metadata Element Set, v1.1 http://purl.org/dc/elements/1.1/subject

Universal Decimal Classification (UDC) [dcterms:UDC]

Vocabulary Encoding Scheme URI	http://purl.org/dc/terms/UDC
Qualified Name	dcterms:UDC
Defined By	Dublin Core Terms http://purl.org/dc/terms/
Type of Term	Vocabulary Encoding Scheme
Label	UDC
Definition	Universal Decimal Classification.
Label in this DCAP	[n/a]
See Also	http://www.udcc.org/
Used as Vocabulary Encoding Scheme For	Collection [dcmitype:Collection] dc:subject , Dublin Core Metadata Element Set, v1.1 http://purl.org/dc/elements/1.1/subject

Collection Description Type Vocabulary [cld:CType]

Vocabulary Encoding Scheme URI	http://purl.org/cld/terms/CType
Qualified Name	cld:CType
Defined By	Collection Description Terms http://purl.org/cld/terms/
Type of Term	Vocabulary Encoding Scheme
Label	Collection Description Type Vocabulary
Definition	A list of types that categorize a collection description.
Label in this DCAP	[n/a]
See Also	Dublin Core Collection Description Type (CType) Vocabulary http://dublincore.org/groups/collections/colldesc-type/
See Also	An Analytical Model of Collections and their Catalogues http://www.ukoln.ac.uk/metadata/rsdp/model/
Used as Vocabulary Encoding Scheme For	Catalogue or Index [cdtype:CollectionDescription] dc:type , Dublin Core Metadata Element Set, v1.1 http://purl.org/dc/elements/1.1/type

Syntax Encoding Schemes Used

- [Uniform Resource Identifier \[dcterms:URI\]](#)
- [Recordkeeping Metadata Schema Extension to ISO8601 \[cld:RKMS-ISO8601\]](#)

Uniform Resource Identifier [dcterms:URI]

Syntax Encoding Scheme URI	http://purl.org/dc/terms/URI
Qualified Name	dcterms:URI
Defined By	Dublin Core Terms http://purl.org/dc/terms/
Type of Term	Syntax Encoding Scheme
Label	Uniform Resource Identifier
Definition	Uniform Resource Identifier.
Label in this DCAP	[n/a]
See Also	http://www.ietf.org/rfc/rfc2396.txt
Used as Syntax Encoding Scheme For	Collection [dcmitype:Collection] dc:identifier , Dublin Core Metadata Element Set, v1.1 http://purl.org/dc/elements/1.1/identifier
Used as Syntax Encoding Scheme For	Catalogue or Index [cdtype:CollectionDescription] dc:identifier , Dublin Core Metadata Element Set, v1.1 http://purl.org/dc/elements/1.1/identifier

Recordkeeping Metadata Schema Extension to ISO8601 [cld:RKMS-ISO8601]

Syntax Encoding Scheme URI	http://purl.org/cld/terms/RKMS-ISO8601
Qualified Name	cld:RKMS-ISO8601
Defined By	Collection Description Terms http://purl.org/cld/terms/
Type of Term	Syntax Encoding Scheme
Label	Recordkeeping Metadata Schema Extension to ISO8601
Definition	Instances of this datatype are dates or periods of time represented as literals according to the rules specified in Recordkeeping Metadata Schema Extension to ISO8601 .
Label in this DCAP	[n/a]
See Also	http://www.sims.monash.edu.au/research/rcrg/research/spirt/deliver/schemes.html#rkmsextension
Used as Syntax Encoding Scheme For	Collection [dcmitype:Collection] dcterms:created , Dublin Core Terms http://purl.org/dc/terms/created
Used as Syntax Encoding Scheme For	Collection [dcmitype:Collection] cld:dateItemsCreated , Collection Description Terms http://purl.org/cld/terms/dateItemsCreated
Used as Syntax Encoding Scheme For	Catalogue or Index [cdtype:CollectionDescription] dcterms:created , Dublin Core Terms http://purl.org/dc/terms/created
Used as Syntax Encoding Scheme For	Catalogue or Index [cdtype:CollectionDescription] cld:dateItemsCreated , Collection Description Terms http://purl.org/cld/terms/dateItemsCreated

Administrative Metadata

A description set conforming to this profile **should** itself be described by an appropriate administrative metadata description. This document does not specify the properties to be used in that administrative metadata description.

Footnote

1. This model is derived from that described in Michael Heaney's *An Analytical Model of Collections and their Catalogues* [AMCC] and *Users and Information Resources: An Extension of the Analytical Model of Collections and their Catalogues into Usage and Transactions* [EAMCC]. It is both a subset and a simplification of that model.

References

[APS] *Dublin Core Collection Application Profile Summary*
<http://dublincore.org/groups/collections/collection-ap-summary/>

[AMCC] Heaney, Michael. *An Analytical Model of Collections and their Catalogues*
<http://www.ukoln.ac.uk/metadata/rsdp/model/>

[EAMCC] Heaney, Michael. *Users and Information Resources: An Extension of the Analytical Model of Collections and their Catalogues into Usage and Transactions*
<http://www.ukoln.ac.uk/cd-focus/model-ext/>

[DCAM] Powell, Andy, Mikael Nilsson, Ambjörn Naeve, Pete Johnston. *DCMI Abstract Model*
<http://dublincore.org/documents/abstract-model/>

Changes made in this version

- Revised the title of the DC CD Application Profile to DC Collections Application Profile
- Added summary Purpose and Scope to document
- Incorporated parts of the "Collections and Collection-level description" section and removed the remainder.
- Clarified the "Use of the DC Collection AP for collection descriptions" to indicate that this was "Use of the DC Collection AP for catalogues or indices" and made subsequent changes to the document.
- Added expository paragraph distinguishing between collections and their catalogues/indices to Purpose and Scope
- Revised "Data Model" section to better explain the data model, and to set apart the DCCAP data model from the AMCC and EAMCC.
- Aligned dcterms in AP with current definitions.



Metadata associated with this resource: <http://dublincore.org/groups/collections/collection-application-profile/index.shtml.rdf>

[Copyright](#) © 1995-2007 [DCMI](#) All Rights Reserved. DCMI [liability](#), [trademark/service mark](#), [document use](#) and [software licensing](#) rules apply. Your interactions with this site are in accordance with our [privacy](#) statements. Please feel free to [contact us](#) for any questions, comments or media inquiries.

DCMI and the DCMI Web site are hosted by [OCLC Research](#).

Copyright © 1995-2007 DCMI. All Rights Reserved.



[Home](#) > [Groups](#) > [Collections](#) > [Collection-terms](#) > [2007-03-09](#)



Dublin Core Metadata Initiative

Making it easier to find information

Dublin Core Collection Description Terms

Creator:	Dublin Core Collection Description Working Group
Date Issued:	2007-03-09
Identifier:	http://dublincore.org/groups/collections/collection-terms/2007-03-09/
Replaces:	http://dublincore.org/groups/collections/collection-terms/2006-08-24/
Is Replaced By:	Not applicable
Latest Version:	http://dublincore.org/groups/collections/collection-terms/

Description of Document: This document describes the new properties, classes, vocabulary encoding schemes and syntax encoding schemes created for use by the application profile for collection-level description developed by the Dublin Core Collection Description Working Group.

Introduction

This document describes the new properties, classes, vocabulary encoding schemes and syntax encoding schemes created for use by the application profile for collection-level description developed by the Dublin Core Collection Description Working Group.

A representation of the terms in this vocabulary is also available as an [RDF/XML document](#).

Note

Where the names are listed below as Qualified Names, prefixes are assumed to be associated with Namespace Names as follows:

- **dc:** <http://purl.org/dc/elements/1.1/>
- **dcterms:** <http://purl.org/dc/terms/>
- **dcmitype:** <http://purl.org/dc/dcmitype/>
- **cld:** <http://purl.org/cld/terms/>

Properties

- [Item Type \[cld:itemType\]](#)
- [Item Format \[cld:itemFormat\]](#)
- [Date Items Created \[cld:dateItemsCreated\]](#)
- [Is Located At \[cld:isLocatedAt\]](#)
- [Is Accessed Via \[cld:isAccessedVia\]](#)
- [Catalogue or Index \[cld:catalogueOrIndex\]](#)
- [Described collection \[cld:describedCollection\]](#)
- [Associated collection \[cld:associatedCollection\]](#)

Item Type (Property cld:itemType)

Property URI	http://purl.org/cld/terms/itemType
Qualified Name	cld:itemType
Defined By	Collection Description Terms http://purl.org/cld/terms/
Type of Term	Property
Domain	dcmitype:Collection
Range	rdfs:Class
Has Inverse Property	[n/a]
Subproperty Of	[n/a]
Label	Item Type
Definition	The nature or genre of the content of one or more items within the collection.

Item Format (Property cld:itemFormat)

Property URI	http://purl.org/cld/terms/itemFormat
Qualified Name	cld:itemFormat
Defined By	Collection Description Terms http://purl.org/cld/terms/
Type of Term	Property
Domain	dcmitype:Collection
Range	
Has Inverse Property	[n/a]
Subproperty Of	[n/a]
Label	Item Format
Definition	A media type, physical or digital, of one or more items within the collection.

Date Items Created (Property cld:dateItemsCreated)

Property URI	http://purl.org/cld/terms/dateItemsCreated
Qualified Name	cld:dateItemsCreated
Defined By	Collection Description Terms http://purl.org/cld/terms/
Type of Term	Property
Domain	dcmitype:Collection
Range	
Has Inverse Property	[n/a]
Subproperty Of	dc:date, Dublin Core Metadata Element Set, v1.1 http://purl.org/dc/elements/1.1/date
Label	Date Items Created
Definition	A range of dates over which the individual items within the collection were created.

Is Located At (Property `cld:isLocatedAt`)

Property URI	http://purl.org/cld/terms/isLocatedAt
Qualified Name	cld:isLocatedAt
Defined By	Collection Description Terms http://purl.org/cld/terms/
Type of Term	Property
Domain	dcmitype:Collection
Range	
Has Inverse Property	[n/a]
Subproperty Of	dc:relation, Dublin Core Metadata Element Set, v1.1 http://purl.org/dc/elements/1.1/relation
Label	Is Located At
Definition	A location where the collection is held.
Comments	A location may be physical or digital. A location is distinct from an agency that administers the location.
See Also	An Analytical Model of Collections and their Catalogues http://www.ukoln.ac.uk/metadata/rslp/model/

Is Accessed Via (Property `cld:isAccessedVia`)

Property URI	http://purl.org/cld/terms/isAccessedVia
Qualified Name	cld:isAccessedVia
Defined By	Collection Description Terms http://purl.org/cld/terms/

Type of Term	Property
Domain	dcmitype:Collection
Range	dcmitype:Service
Has Inverse Property	[n/a]
Subproperty Of	dc:relation, Dublin Core Metadata Element Set, v1.1 http://purl.org/dc/elements/1.1/relation
Label	Is Accessed Via
Definition	A service that provides access to the items within the collection.
Comments	A service may be provided physically or digitally.

Catalogue or Index (Property `cld:catalogueOrIndex`)

Property URI	http://purl.org/cld/terms/catalogueOrIndex
Qualified Name	cld:catalogueOrIndex
Defined By	Collection Description Terms http://purl.org/cld/terms/
Type of Term	Property
Domain	dcmitype:Collection
Range	cdtype:CatalogueOrIndex
Range	dcmitype:Collection
Has Inverse Property	cld:describedCollection, Collection Description Terms http://purl.org/cld/terms/
Subproperty Of	dc:description, Dublin Core Metadata Element Set, v1.1 http://purl.org/dc/elements/1.1/description
Label	Catalogue or Index
Definition	A catalogue for, or index of, the collection
See Also	An Analytical Model of Collections and their Catalogues http://www.ukoln.ac.uk/metadata/rsip/model/

Described Collection (Property `cld:describedCollection`)

Property URI	http://purl.org/cld/terms/describedCollection
Qualified Name	cld:describedCollection
Defined By	Collection Description Terms http://purl.org/cld/terms/
Type of Term	Property
Domain	cdtype:CatalogueOrIndex
Domain	dcmitype:Collection

Range	dcmitype:Collection
Has Inverse Property	cld:collectionDescription, Collection Description Terms http://purl.org/cld/terms/
Subproperty Of	dc:relation, Dublin Core Metadata Element Set, v1.1 http://purl.org/dc/elements/1.1/relation
Label	Described Collection
Definition	A collection that is described by the current collection.
See Also	An Analytical Model of Collections and their Catalogues http://www.ukoln.ac.uk/metadata/rslp/model/

Associated Collection (Property `cld:associatedCollection`)

Property URI	http://purl.org/cld/terms/associatedCollection
Qualified Name	cld:associatedCollection
Defined By	Collection Description Terms http://purl.org/cld/terms/
Type of Term	Property
Domain	dcmitype:Collection
Range	dcmitype:Collection
Has Inverse Property	[n/a]
Subproperty Of	dc:relation, Dublin Core Metadata Element Set, v1.1 http://purl.org/dc/elements/1.1/relation
Label	Associated Collection
Definition	A second collection that is associated with the current collection.
Comments	The nature of the association between the collections is unspecified. The property may be used to reference any collection related in some way to the current collection.

Vocabulary Encoding Schemes

- [Collection Description Accrual Method Vocabulary \[cld:AccrualMethod\]](#)
- [Collection Description Frequency Vocabulary \[cld:Frequency\]](#)
- [Collection Description Accrual Policy Vocabulary \[cld:AccrualPolicy\]](#)

Collection Description Accrual Method Vocabulary [cld:AccrualMethod]

Vocabulary Encoding Scheme URI	http://purl.org/cld/terms/AccrualMethod
--------------------------------	---

Qualified Name	cld:AccrualMethod
Defined By	Collection Description Terms http://purl.org/cld/terms/
Type of Term	Vocabulary Encoding Scheme
Label	Collection Description Accrual Method Vocabulary
Definition	A set of methods by which items are added to a collection.
Comments	[n/a]
See Also	http://dublincore.org/groups/collections/accrual-method/
See Also	http://purl.org/cld/accmeth/

Collection Description Frequency Vocabulary [cld:Frequency]

Vocabulary Encoding Scheme URI	http://purl.org/cld/terms/Frequency
Qualified Name	cld:Frequency
Defined By	Collection Description Terms http://purl.org/cld/terms/
Type of Term	Vocabulary Encoding Scheme
Label	Collection Description Frequency Vocabulary
Definition	A set of frequencies with which a repeatable event occurs.
Comments	The Collection Description Frequency Vocabulary is based on the set of codes used for publication frequency in the MARC 21 Concise Format for Holdings Data.
See Also	http://www.loc.gov/marc/holdings/echdcapt.html
See Also	http://dublincore.org/groups/collections/frequency/
See Also	http://purl.org/cld/freq/

Collection Description Accrual Policy Vocabulary [cld:AccrualPolicy]

Vocabulary Encoding Scheme URI	http://purl.org/cld/terms/AccrualPolicy
---------------------------------------	--

Qualified Name	cld:AccrualPolicy
Defined By	Collection Description Terms http://purl.org/cld/terms/
Type of Term	Vocabulary Encoding Scheme
Label	Collection Description Accrual Policy Vocabulary
Definition	A set of policies governing the addition of items are added to a collection.
Comments	[n/a]
See Also	http://dublincore.org/groups/collections/accrual-policy/
See Also	http://purl.org/cld/accpol/

Syntax Encoding Schemes

- [Recordkeeping Metadata Schema Extension to ISO8601 \[cld:RKMS-ISO8601\]](#)

Recordkeeping Metadata Schema Extension to ISO8601 [cld:RKMS-ISO8601]

Syntax Encoding Scheme URI	http://purl.org/cld/terms/RKMS-ISO8601
Qualified Name	cld:RKMS-ISO8601
Defined By	Collection Description Terms http://purl.org/cld/terms/
Type of Term	Syntax Encoding Scheme
Label	Recordkeeping Metadata Schema Extension to ISO8601
Definition	Instances of this datatype are dates or periods of time represented as literals according to the rules specified in Recordkeeping Metadata Schema Extension to ISO8601 .
Comments	[n/a]
See Also	http://www.sims.monash.edu.au/research/rcrg/research/spirt/deliver/schemes.html#rkmsextension

Changes made in this version

- cld:collectionDescription changed to cld:catalogueOrIndex
- Changed definition of cld:itemType from The nature or genre of the content of one or more items within the collection. to The nature or genre of one or more items within the collection.



Metadata associated with this resource: <http://dublincore.org/groups/collections/collection-terms/2006-08-24/index.shtml.rdf>

[Copyright](#) © 1995-2007 [DCMI](#) All Rights Reserved. DCMI [liability](#), [trademark/service mark](#), [document use](#) and [software licensing](#) rules apply. Your interactions with this site are in accordance with our [privacy](#) statements. Please feel free to [contact us](#) for any questions, comments or media inquiries.

DCMI and the DCMI Web site are hosted by [OCLC Research](#).

Copyright © 1995-2007 DCMI. All Rights Reserved.



[Home](#) > [Groups](#) > [Collections](#) > [Colldesc-type](#) > [2007-03-09](#) >



Dublin Core Metadata Initiative

Making it easier to find information

Dublin Core Collection Description Type (CDType) Vocabulary

Creator:	Dublin Core Collection Description Working Group
Date Issued:	2007-03-09
Identifier:	http://dublincore.org/groups/collections/colldesc-type/2007-03-09/
Replaces:	http://dublincore.org/groups/collections/colldesc-type/2006-08-24/
Is Replaced By:	Not applicable
Latest Version:	http://dublincore.org/groups/collections/colldesc-type/

Description of Document: This document describes the collection description type vocabulary used by the application profile for collection-level description developed by the Dublin Core Collection Description Working Group.

Introduction

The Collection Description Type (CDType) Vocabulary provides a set of classes that can be used as values of the `dc:type` property in descriptions of collection descriptions. It has been developed in association with the [Dublin Core Collections Application Profile \(DC Collections AP\)](#) but this vocabulary is independent of that profile and the classes defined here may be referenced in other metadata descriptions

The Collection Description Type (CDType) Vocabulary is based on the typology of collection descriptions in Michael Heaney's *An Analytical Model of Collections and their Catalogues*

A representation of the terms in this vocabulary is also available as an [RDF/XML document](#).

Note

All references to properties, classes, vocabulary encoding schemes and syntax encoding schemes in DC metadata descriptions are made using URIs. In this document, Qualified Names of the form `prefix " : " local-part` are used as abbreviations for URIs which identify metadata terms. Prefixes are assumed to be associated with Namespace Names (URIs) as follows, and the corresponding URI for the term is constructed by concatenating the Namespace Name and the `local-part`:

- **dc:** <http://purl.org/dc/elements/1.1/>
- **dcterms:** <http://purl.org/dc/terms/>
- **dcmitype:** <http://purl.org/dc/dcmitype/>
- **cld:** <http://purl.org/cld/terms/>
- **cdtype:** <http://purl.org/cld/cdtype/>

Collection Description Type Vocabulary [cld:CDType]

Identifier	http://purl.org/cld/terms/CDType
Qualified Name	cld:CDType
Defined By	Collection Description Terms http://purl.org/cld/terms/
Type of Term	Vocabulary Encoding Scheme
Label	Collection Description Type Vocabulary
Definition	A set of types used to categorize a collection description according to its organization.
Comments	
See Also	An Analytical Model of Collections and their Catalogues http://www.ukoln.ac.uk/metadata/rslp/model/

Vocabulary Terms/Classes

- [Catalogue or Index \[cdtype:CatalogueOrIndex\]](#)
- [Analytic Finding Aid \[cdtype:AnalyticFindingAid\]](#)
- [Hierarchic Finding Aid \[cdtype:HierarchicFindingAid\]](#)
- [Indexing Finding Aid \[cdtype:IndexingFindingAid\]](#)

Catalogue or Index [cdtype:CatalogueOrIndex]

Identifier	http://purl.org/cld/cdtype/CatalogueOrIndex
Qualified Name	cdtype:CatalogueOrIndex
Defined By	Collection Description Type Vocabulary http://purl.org/cld/cdtype/
Type of Term	Class
Type of Term	Vocabulary Term
SubClass Of	Collection, Dublin Core Type Vocabulary [dcmitype:Collection] http://purl.org/dc/dcmitype/Collection
Label	Catalogue or Index
Definition	A catalogue for, or index of, a collection
Comments	

See Also	An Analytical Model of Collections and their Catalogues http://www.ukoln.ac.uk/metadata/rslp/model/
----------	--

Analytic Finding Aid [cdtype:AnalyticFindingAid]

Identifier	http://purl.org/cld/cdtype/AnalyticFindingAid
Qualified Name	cdtype:AnalyticFindingAid
Defined By	Collection Description Type Vocabulary http://purl.org/cld/cdtype/
Type of Term	Class
Type of Term	Vocabulary Term
SubClass Of	Collection, Dublin Core Type Vocabulary [dcmitype:Collection] http://purl.org/dc/dcmitype/Collection
SubClass Of	Catalogue or Index, Collection Description Type Vocabulary [cdtype:CatalogueOrIndex] http://purl.org/cld/cdtype/CatalogueOrIndex
Label	Analytic Finding Aid
Definition	A collection of individual records describing the items, and the intellectual content of those items, of a second collection. The records provide information about individual items. There are no intrinsic relationships between the records, and each record is essentially self-contained.
Comments	There may, in the individual records, be information about collections but that is not the focus of the catalogue. AnalyticFindingAids are typically created with significant human input.
See Also	An Analytical Model of Collections and their Catalogues http://www.ukoln.ac.uk/metadata/rslp/model/

Hierarchic Finding Aid [cdtype:HierarchicFindingAid]

Identifier	http://purl.org/cld/cdtype/HierarchicFindingAid
Qualified Name	cdtype:HierarchicFindingAid
Type of Term	Class
Type of Term	Vocabulary Term
SubClass Of	Collection, Dublin Core Type Vocabulary [dcmitype:Collection] http://purl.org/dc/dcmitype/Collection
SubClass Of	Catalogue or Index, Collection Description Type Vocabulary [cdtype:CatalogueOrIndex] http://purl.org/cld/cdtype/CatalogueOrIndex
Label	Hierarchic Finding Aid
Defined By	Collection Description Type Vocabulary http://purl.org/cld/cdtype/

Definition	A collection of records describing the individual items, and the intellectual content of those items, of a second collection. The records provide information about the collection and/or about the individual items, including contextual information about the relations between items and the collection. Relationships exist between records, and records are interpreted in the context of those relationships.
Comments	The records are grounded within the overall arrangement of the collection, e.g. grouping together all the letters, account books etc. in an ordered sequence or sequences. Items are often not uniquely identifiable when considered in isolation, so the context of the collection is an essential element in compiling the hierarchic finding-aid. Hierarchic finding-aids are typically created with significant human input.
See Also	An Analytical Model of Collections and their Catalogues http://www.ukoln.ac.uk/metadata/rslp/model/

Indexing Finding Aid [cdtype:IndexingFindingAid]

Identifier	http://purl.org/cld/cdtype/IndexingFindingAid
Qualified Name	IndexingFindingAid
Type of Term	Class
Type of Term	Vocabulary Term
SubClass Of	Collection, Dublin Core Type Vocabulary [dcmitype:Collection] http://purl.org/dc/dcmitype/Collection
SubClass Of	Catalogue or Index, Collection Description Type Vocabulary [cdtype:CatalogueOrIndex] http://purl.org/cld/cdtype/CatalogueOrIndex
Label	IndexingFindingAid
Defined By	Collection Description Type Vocabulary http://purl.org/cld/cdtype/
Definition	A collection of records consisting of information derived from items in a second collection, regardless of the content of those items.
Comments	For example, a robotic search engine will create an index of the words in a document (or catalogue record) regardless of their context and without trying to identify the discrete elements of intellectual content contained therein. IndexingFindingAides are typically generated automatically by a software robot or other harvesting technology, but may be created by human effort.
See Also	An Analytical Model of Collections and their Catalogues http://www.ukoln.ac.uk/metadata/rslp/model/

Changes made in this version

- Changed cldtype:CollectionDescription to cldtype:CatalogueOrIndex and made subsequent changes
- Removed cldtype:UnitaryFindingAid



Metadata associated with this resource: <http://dublincore.org/groups/collections/colldesc-type/2006-08-24/index.shtml.rdf>

[Copyright](#) © 1995-2007 [DCMI](#) All Rights Reserved. DCMI [liability](#), [trademark/service mark](#), [document use](#) and [software licensing](#) rules apply. Your interactions with this site are in accordance with our [privacy](#) statements. Please feel free to [contact us](#) for any questions, comments or media inquiries.

DCMI and the DCMI Web site are hosted by [OCLC Research](#).

Copyright © 1995-2007 DCMI. All Rights Reserved.



[Home](#) > [Groups](#) > [Collections](#) > [Accrual-method](#) > [2007-03-09](#) >



Dublin Core Metadata Initiative

Making it easier to find information

Dublin Core Collection Description Accrual Method Vocabulary

Creator:	Dublin Core Collection Description Working Group
Date Issued:	2007-03-09
Identifier:	http://dublincore.org/groups/collections/accrual-method/2007-03-09/
Replaces:	http://dublincore.org/groups/collections/accrual-method/2006-08-24/
Is Replaced By:	Not applicable
Latest Version:	http://dublincore.org/groups/collections/accrual-method/

Description of Document: This document describes the accrual method vocabulary used by the application profile for collection-level description developed by the Dublin Core Collection Description Working Group.

Introduction

The Collection Description Accrual Method Vocabulary provides a set of terms that can be used as values of the `dcterms:accrualPolicy` property in descriptions of collections. It has been developed in association with the [Dublin Core Collections Application Profile \(DC Collections AP\)](#) but this vocabulary is independent of that profile and the terms defined here may be referenced in other metadata descriptions and used as the values of other properties.

In statements in DC metadata descriptions, the URIs of the individual terms may be used as *value URIs* and/or the labels of the terms may be used as *value strings*. The *vocabulary encoding scheme URI* is `http://purl.org/cld/terms/AccrualMethod`.

A representation of the terms in this vocabulary is also available as an [RDF/XML document](#).

Note

All references to properties, classes, vocabulary encoding schemes and syntax encoding schemes in DC metadata descriptions are made using URIs. In this document, Qualified Names of the form `prefix " : " local-part` are used as abbreviations for URIs which identify metadata terms. Prefixes are assumed to be associated with Namespace Names (URIs) as follows, and the corresponding URI for the term is constructed by concatenating the Namespace Name and the `local-part`:

- **dc:** <http://purl.org/dc/elements/1.1/>
- **dcterms:** <http://purl.org/dc/terms/>
- **dcmitype:** <http://purl.org/dc/dcmitype/>
- **cld:** <http://purl.org/cld/terms/>
- **accmeth:** <http://purl.org/cld/accmeth/>

Collection Description Accrual Method Vocabulary [cld:AccrualMethod]

Identifier	http://purl.org/cld/terms/AccrualMethod
Qualified Name	cld:AccrualMethod
Defined By	Collection Description Terms http://purl.org/cld/terms/
Type of Term	Vocabulary Encoding Scheme
Label	Collection Description Accrual Method Vocabulary
Definition	A set of methods by which items are added to a collection.
Comments	
See Also	

Vocabulary Terms

- [Deposit \[accmeth:deposit\]](#)
- [Donation \[accmeth:donation\]](#)
- [Purchase \[accmeth:purchase\]](#)
- [Loan \[accmeth:loan\]](#)
- [License \[accmeth:license\]](#)
- [Item Creation \[accmeth:itemCreation\]](#)

Deposit [accmeth:deposit]

Identifier	http://purl.org/cld/accmeth/deposit
Qualified Name	accmeth:deposit
Defined By	Collection Description Accrual Method Namespace http://purl.org/cld/accmeth/
Type of Term	Vocabulary Term
Label	Deposit
Definition	The permanent addition of items to the collection, where the transfer of ownership is conditional on certain requirements or restrictions, but without financial payment or reciprocal transfer of items.
Comments	
Is Member Of	Collection Description Accrual Method Vocabulary http://purl.org/cld/terms/AccrualMethod
See Also	

Donation [accmeth:donation]

Identifier	http://purl.org/cld/accmeth/donation
Qualified Name	accmeth:donation
Defined By	Collection Description Accrual Method Namespace http://purl.org/cld/accmeth/
Type of Term	Vocabulary Term
Label	Donation
Definition	The permanent addition of items to the collection through the transfer of ownership, without financial payment.
Comments	
Is Member Of	Collection Description Accrual Method Vocabulary http://purl.org/cld/terms/AccrualMethod
See Also	

Purchase [accmeth:purchase]

Identifier	http://purl.org/cld/accmeth/purchase
Qualified Name	accmeth:purchase
Defined By	Collection Description Accrual Method Namespace http://purl.org/cld/accmeth/
Type of Term	Vocabulary Term
Label	Purchase
Definition	The permanent addition of items to the collection through the transfer of ownership, accompanied by one or more financial payments.
Comments	
Is Member Of	Collection Description Accrual Method Vocabulary http://purl.org/cld/terms/AccrualMethod
See Also	

Loan [accmeth:loan]

Identifier	http://purl.org/cld/accmeth/loan
Qualified Name	accmeth:loan
Defined By	Collection Description Accrual Method Namespace http://purl.org/cld/accmeth/
Type of Term	Vocabulary Term
Label	Loan
Definition	
Comments	
Is Member Of	
See Also	

Definition	The temporary addition of items to the collection with no transfer of ownership, without financial payment.
Comments	
Is Member Of	Collection Description Accrual Method Vocabulary http://purl.org/cld/terms/AccrualMethod
See Also	

License [accmeth:license]

Identifier	http://purl.org/cld/accmeth/license
Qualified Name	accmeth:license
Defined By	Collection Description Accrual Method Namespace http://purl.org/cld/accmeth/
Type of Term	Vocabulary Term
Label	License
Definition	The temporary addition of items to the collection with no transfer of ownership, accompanied by one or more financial payments.
Comments	
Is Member Of	Collection Description Accrual Method Vocabulary http://purl.org/cld/terms/AccrualMethod
See Also	

Item Creation [accmeth:itemCreation]

Identifier	http://purl.org/cld/accmeth/itemcreation
Qualified Name	accmeth:itemcreation
Defined By	Collection Description Accrual Method Namespace http://purl.org/cld/accmeth/
Type of Term	Vocabulary Term
Label	Item Creation
Definition	The permanent addition of items to the collection as a result of item creation by the owner of the collection.
Comments	
Is Member Of	Collection Description Accrual Method Vocabulary http://purl.org/cld/terms/AccrualMethod
See Also	

Changes made in this version

- Changed DC Collection Description Application Profile Name to DC Collections Application Profile



Metadata associated with this resource: <http://dublincore.org/groups/collections/accrual-method/2006-08-24/index.shtml.rdf>

[Copyright](#) © 1995-2007 [DCMI](#) All Rights Reserved. DCMI [liability](#), [trademark/service mark](#), [document use](#) and [software licensing](#) rules apply. Your interactions with this site are in accordance with our [privacy](#) statements. Please feel free to [contact us](#) for any questions, comments or media inquiries.

DCMI and the DCMI Web site are hosted by [OCLC Research](#).

Copyright © 1995-2007 DCMI. All Rights Reserved.



[Home](#) > [Groups](#) > [Collections](#) > [Accrual-policy](#) > [2007-03-09](#) >



Dublin Core Metadata Initiative

Making it easier to find information

Dublin Core Collection Description Accrual Policy Vocabulary

Creator:	Dublin Core Collection Description Working Group
Date Issued:	2007-03-09
Identifier:	http://dublincore.org/groups/collections/accrual-policy/2007-03-09/
Replaces:	http://dublincore.org/groups/collections/accrual-policy/2006-08-24/
Is Replaced By:	Not applicable
Latest Version:	http://dublincore.org/groups/collections/accrual-policy/

Description of Document: This document describes the accrual policy vocabulary used by the application profile for collection-level description developed by the Dublin Core Collection Description Working Group.

Introduction

The Collection Description Accrual Policy Vocabulary provides a set of terms that can be used as values of the `dcterms:accrualPolicy` property in descriptions of collections. It has been developed in association with the [Dublin Core Collections Application Profile \(DC Collections AP\)](#) but this vocabulary is independent of that profile and the terms defined here may be referenced in other metadata descriptions and used as the values of other properties.

In statements in DC metadata descriptions, the URIs of the individual terms may be used as *value URIs* and/or the labels of the terms may be used as *value strings*. The *vocabulary encoding scheme URI* is `http://purl.org/cld/terms/AccrualPolicy`.

A representation of the terms in this vocabulary is also available as an [RDF/XML document](#).

Note

All references to properties, classes, vocabulary encoding schemes and syntax encoding schemes in DC metadata descriptions are made using URIs. In this document, Qualified Names of the form `prefix " : " local-part` are used as abbreviations for URIs which identify metadata terms. Prefixes are assumed to be associated with Namespace Names (URIs) as follows, and the corresponding URI for the term is constructed by concatenating the Namespace Name and the `local-part`:

- **dc:** <http://purl.org/dc/elements/1.1/>
- **dcterms:** <http://purl.org/dc/terms/>
- **dcmitype:** <http://purl.org/dc/dcmitype/>
- **cld:** <http://purl.org/cld/terms/>
- **accpol:** <http://purl.org/cld/accpol/>

Collection Description Accrual Policy Vocabulary [cld:AccrualPolicy]

Identifier	http://purl.org/cld/terms/AccrualPolicy
Qualified Name	cld:AccrualPolicy
Defined By	Collection Description Terms Namespace http://purl.org/cld/terms/
Type of Term	Vocabulary Encoding Scheme
Label	Collection Description Accrual Policy Vocabulary
Definition	A set of policies governing the addition of items are added to a collection.
Comments	
See Also	

Vocabulary Terms

- [Closed \[accpol:closed\]](#)
- [Passive \[accpol:passive\]](#)
- [Active \[accpol:active\]](#)
- [Partial \[accpol:partial\]](#)

Closed [accpol:closed]

Identifier	http://purl.org/cld/accpol/closed
Qualified Name	accpol:closed
Defined By	Collection Description Accrual Policy Namespace http://purl.org/cld/accpol/
Type of Term	Vocabulary Term
Label	Closed
Definition	A policy that items are no longer added to the collection.
Comments	
Is Member Of	Collection Description Accrual Policy Vocabulary http://purl.org/cld/terms/AccrualPolicy
See Also	

Passive [accpol:passive]

Identifier	http://purl.org/cld/accpol/passive
Qualified Name	accpol:passive
Defined By	Collection Description Accrual Policy Namespace http://purl.org/cld/accpol/
Type of Term	Vocabulary Term
Label	Passive
Definition	A policy that items are added to the collection only in response to the initiative of an external agent.
Comments	
Is Member Of	Collection Description Accrual Policy Vocabulary http://purl.org/cld/terms/AccrualPolicy
See Also	

Active [[accpol:active](#)]

Identifier	http://purl.org/cld/accpol/active
Qualified Name	accpol:active
Defined By	Collection Description Accrual Policy Namespace http://purl.org/cld/accpol/
Type of Term	Vocabulary Term
Label	Active
Definition	A policy that items are actively sought for addition to the collection.
Comments	
Is Member Of	Collection Description Accrual Policy Vocabulary http://purl.org/cld/terms/AccrualPolicy
See Also	

Partial [[accpol:partial](#)]

Identifier	http://purl.org/cld/accpol/partial
Qualified Name	accpol:partial
Defined By	Collection Description Accrual Policy Namespace http://purl.org/cld/accpol/
Type of Term	Vocabulary Term
Label	Partial
Definition	A policy that items are actively sought for addition to a specific part of the collection.
Comments	
Is Member Of	Collection Description Accrual Policy Vocabulary http://purl.org/cld/terms/AccrualPolicy
See Also	

Changes made in this version

- Changed name of DC Collection Description Application Profile to DC Collections Application Profile



Metadata associated with this resource: <http://dublincore.org/groups/collections/accrual-policy/2006-08-24/index.shtml.rdf>

[Copyright](#) © 1995-2007 [DCMI](#) All Rights Reserved. DCMI [liability](#), [trademark/service mark](#), [document use](#) and [software licensing](#) rules apply. Your interactions with this site are in accordance with our [privacy](#) statements. Please feel free to [contact us](#) for any questions, comments or media inquiries.

DCMI and the DCMI Web site are hosted by [OCLC Research](#).

Copyright © 1995-2007 DCMI. All Rights Reserved.



[Home](#) > [Groups](#) > [Collections](#) > [Frequency](#) > [2007-03-09](#) >



Dublin Core Metadata Initiative

Making it easier to find information

Dublin Core Collection Description Frequency Vocabulary

Creator:	Dublin Core Collection Description Working Group
Date Issued:	2007-03-09
Identifier:	http://dublincore.org/groups/collections/frequency/2007-03-09/
Replaces:	http://dublincore.org/groups/collections/frequency/2006-08-24/
Is Replaced By:	Not applicable
Latest Version:	http://dublincore.org/groups/collections/frequency/

Description of Document: This document describes the frequency vocabulary used by the application profile for collection-level description developed by the Dublin Core Collection Description Working Group.

Introduction

The Collection Description Frequency Vocabulary provides a set of terms that can be used as values of the `dc:terms:accrualPeriodicity` property in descriptions of collections. It has been developed in association with the [Dublin Core Collections Application Profile \(DC Collections AP\)](#) but this vocabulary is independent of that profile and the terms defined here may be referenced in other metadata descriptions and used as the values of other properties.

The Collection Description Frequency Vocabulary is based on the set of codes used for publication frequency in the *MARC 21 Concise Format for Holdings Data*.

In statements in DC metadata descriptions, the URIs of the individual terms may be used as *value URIs* and/or the labels of the terms may be used as *value strings*. The *vocabulary encoding scheme URI* is `http://purl.org/cld/terms/Frequency`.

A representation of the terms in this vocabulary is also available as an [RDF/XML document](#).

Note

All references to properties, classes, vocabulary encoding schemes and syntax encoding schemes in DC metadata descriptions are made using URIs. In this document, Qualified Names of the form `prefix " : " local-part` are used as abbreviations for URIs which identify metadata terms. Prefixes are assumed to be associated with Namespace Names (URIs)

as follows, and the corresponding URI for the term is constructed by concatenating the Namespace Name and the local-part:

- **dc:** <http://purl.org/dc/elements/1.1/>
- **dcterms:** <http://purl.org/dc/terms/>
- **dcmitype:** <http://purl.org/dc/dcmitype/>
- **cld:** <http://purl.org/cld/terms/>
- **freq:** <http://purl.org/cld/freq/>

Collection Description Frequency Vocabulary [cld:Frequency]

Identifier	http://purl.org/cld/terms/Frequency
Qualified Name	cld:Frequency
Defined By	Collection Description Terms Namespace http://purl.org/cld/terms/
Type of Term	Vocabulary Encoding Scheme
Label	Collection Description Frequency Vocabulary
Definition	A set of frequencies with which a repeatable event occurs.
Comments	
See Also	MARC 21 Concise Holdings: Caption and Pattern Fields (853-855) http://www.loc.gov/marc/holdings/echdcapt.html

Vocabulary Terms

- [Triennial \[freq:triennial\]](#)
- [Biennial \[freq:biennial\]](#)
- [Annual \[freq:annual\]](#)
- [Semiannual \[freq:semiannual\]](#)
- [Three times a year \[freq:threeTimesAYear\]](#)
- [Quarterly \[freq:quarterly\]](#)
- [Bimonthly \[freq:bimonthly\]](#)
- [Monthly \[freq:monthly\]](#)
- [Semimonthly \[freq:semimonthly\]](#)
- [Biweekly \[freq:biweekly\]](#)
- [Three times a month \[freq:threeTimesAMonth\]](#)
- [Weekly \[freq:weekly\]](#)
- [Semiweekly \[freq:semiweekly\]](#)
- [Three times a week \[freq:threeTimesAWeek\]](#)
- [Daily \[freq:daily\]](#)
- [Continuous \[freq:continuous\]](#)
- [Irregular \[freq:irregular\]](#)

Triennial [freq:triennial]

Identifier	http://purl.org/cld/freq/triennial
Qualified Name	freq:triennial

Defined By	Collection Description Frequency Namespace http://purl.org/cld/freq/
Type of Term	Vocabulary Term
Label	Triennial
Definition	The event occurs every three years.
Comments	
Is Member Of	Collection Description Frequency Vocabulary http://purl.org/cld/terms/Frequency
See Also	MARC 21 Concise Holdings: Caption and Pattern Fields (853-855) http://www.loc.gov/marc/holdings/echdcapt.html

Biennial [freq:biennial]

Identifier	http://purl.org/cld/freq/biennial
Qualified Name	freq:biennial
Defined By	Collection Description Frequency Namespace http://purl.org/cld/freq/
Type of Term	Vocabulary Term
Label	Biennial
Definition	The event occurs every two years.
Comments	
Is Member Of	Collection Description Frequency Vocabulary http://purl.org/cld/terms/Frequency
See Also	MARC 21 Concise Holdings: Caption and Pattern Fields (853-855) http://www.loc.gov/marc/holdings/echdcapt.html

Annual [freq:annual]

Identifier	http://purl.org/cld/freq/annual
Qualified Name	freq:annual
Defined By	Collection Description Frequency Namespace http://purl.org/cld/freq/
Type of Term	Vocabulary Term
Label	Annual
Definition	The event occurs once a year.
Comments	
Is Member Of	Collection Description Frequency Vocabulary http://purl.org/cld/terms/Frequency
See Also	MARC 21 Concise Holdings: Caption and Pattern Fields (853-855) http://www.loc.gov/marc/holdings/echdcapt.html

Semiannual [freq:semiannual]

Identifier	http://purl.org/cld/freq/semiannual
Qualified Name	freq:semiannual
Defined By	Collection Description Frequency Namespace http://purl.org/cld/freq/
Type of Term	Vocabulary Term
Label	Semiannual
Definition	The event occurs twice a year.
Comments	
Is Member Of	Collection Description Frequency Vocabulary http://purl.org/cld/terms/Frequency
See Also	MARC 21 Concise Holdings: Caption and Pattern Fields (853-855) http://www.loc.gov/marc/holdings/echdcapt.html

Three times a year [freq:threeTimesAYear]

Identifier	http://purl.org/cld/freq/threeTimesAYear
Qualified Name	freq:threeTimesAYear
Defined By	Collection Description Frequency Namespace http://purl.org/cld/freq/
Type of Term	Vocabulary Term
Label	Three times a year
Definition	The event occurs three times a year.
Comments	
Is Member Of	Collection Description Frequency Vocabulary http://purl.org/cld/terms/Frequency
See Also	MARC 21 Concise Holdings: Caption and Pattern Fields (853-855) http://www.loc.gov/marc/holdings/echdcapt.html

Quarterly [freq:quarterly]

Identifier	http://purl.org/cld/freq/quarterly
Qualified Name	freq:quarterly
Defined By	Collection Description Frequency Namespace http://purl.org/cld/freq/
Type of Term	Vocabulary Term
Label	Quarterly
Definition	The event occurs every three months.

Comments	
Is Member Of	Collection Description Frequency Vocabulary http://purl.org/cld/terms/Frequency
See Also	MARC 21 Concise Holdings: Caption and Pattern Fields (853-855) http://www.loc.gov/marc/holdings/echdcapt.html

Bimonthly [freq:bimonthly]

Identifier	http://purl.org/cld/freq/bimonthly
Qualified Name	freq:bimonthly
Defined By	Collection Description Frequency Namespace http://purl.org/cld/freq/
Type of Term	Vocabulary Term
Label	Bimonthly
Definition	The event occurs every two months.
Comments	
Is Member Of	Collection Description Frequency Vocabulary http://purl.org/cld/terms/Frequency
See Also	MARC 21 Concise Holdings: Caption and Pattern Fields (853-855) http://www.loc.gov/marc/holdings/echdcapt.html

Monthly [freq:monthly]

Identifier	http://purl.org/cld/freq/monthly
Qualified Name	freq:monthly
Defined By	Collection Description Frequency Namespace http://purl.org/cld/freq/
Type of Term	Vocabulary Term
Label	Monthly
Definition	The event occurs once a month.
Comments	
Is Member Of	Collection Description Frequency Vocabulary http://purl.org/cld/terms/Frequency
See Also	MARC 21 Concise Holdings: Caption and Pattern Fields (853-855) http://www.loc.gov/marc/holdings/echdcapt.html

Semimonthly [freq:semimonthly]

Identifier	http://purl.org/cld/freq/semimonthly
Qualified Name	freq:semimonthly

Defined By	Collection Description Frequency Namespace http://purl.org/cld/freq/
Type of Term	Vocabulary Term
Label	Semimonthly
Definition	The event occurs twice a month.
Comments	
Is Member Of	Collection Description Frequency Vocabulary http://purl.org/cld/terms/Frequency
See Also	MARC 21 Concise Holdings: Caption and Pattern Fields (853-855) http://www.loc.gov/marc/holdings/echdcapt.html

Biweekly [freq:biweekly]

Identifier	http://purl.org/cld/freq/biweekly
Qualified Name	freq:biweekly
Defined By	Collection Description Frequency Namespace http://purl.org/cld/freq/
Type of Term	Vocabulary Term
Label	Biweekly
Definition	The event occurs every two weeks.
Comments	
Is Member Of	Collection Description Frequency Vocabulary http://purl.org/cld/terms/Frequency
See Also	MARC 21 Concise Holdings: Caption and Pattern Fields (853-855) http://www.loc.gov/marc/holdings/echdcapt.html

Three times a month [freq:threeTimesAMonth]

Identifier	http://purl.org/cld/freq/threeTimesAMonth
Qualified Name	freq:threeTimesAMonth
Defined By	Collection Description Frequency Namespace http://purl.org/cld/freq/
Type of Term	Vocabulary Term
Label	Three times a month
Definition	The event occurs three times a month.
Comments	
Is Member Of	Collection Description Frequency Vocabulary http://purl.org/cld/terms/Frequency
See Also	MARC 21 Concise Holdings: Caption and Pattern Fields (853-855) http://www.loc.gov/marc/holdings/echdcapt.html

Weekly [freq:weekly]

Identifier	http://purl.org/cld/freq/weekly
Qualified Name	freq:weekly
Defined By	Collection Description Frequency Namespace http://purl.org/cld/freq/
Type of Term	Vocabulary Term
Label	Weekly
Definition	The event occurs once a week.
Comments	
Is Member Of	Collection Description Frequency Vocabulary http://purl.org/cld/terms/Frequency
See Also	MARC 21 Concise Holdings: Caption and Pattern Fields (853-855) http://www.loc.gov/marc/holdings/echdcapt.html

Semiweekly [freq:semiweekly]

Identifier	http://purl.org/cld/freq/semiweekly
Qualified Name	freq:semiweekly
Defined By	Collection Description Frequency Namespace http://purl.org/cld/freq/
Type of Term	Vocabulary Term
Label	Semiweekly
Definition	The event occurs twice a week.
Comments	
Is Member Of	Collection Description Frequency Vocabulary http://purl.org/cld/terms/Frequency
See Also	MARC 21 Concise Holdings: Caption and Pattern Fields (853-855) http://www.loc.gov/marc/holdings/echdcapt.html

Three times a week [freq:threeTimesAWeek]

Identifier	http://purl.org/cld/freq/threeTimesAWeek
Qualified Name	freq:threeTimesAWeek
Defined By	Collection Description Frequency Namespace http://purl.org/cld/freq/
Type of Term	Vocabulary Term
Label	Three times a week
Definition	The event occurs three times a week.

Comments	
Is Member Of	Collection Description Frequency Vocabulary http://purl.org/cld/terms/Frequency
See Also	MARC 21 Concise Holdings: Caption and Pattern Fields (853-855) http://www.loc.gov/marc/holdings/echdcapt.html

Daily [freq:daily]

Identifier	http://purl.org/cld/freq/daily
Qualified Name	freq:daily
Defined By	Collection Description Frequency Namespace http://purl.org/cld/freq/
Type of Term	Vocabulary Term
Label	Daily
Definition	The event occurs once a day.
Comments	
Is Member Of	Collection Description Frequency Vocabulary http://purl.org/cld/terms/Frequency
See Also	MARC 21 Concise Holdings: Caption and Pattern Fields (853-855) http://www.loc.gov/marc/holdings/echdcapt.html

Continuous [freq:continuous]

Identifier	http://purl.org/cld/freq/continuous
Qualified Name	freq:continuous
Defined By	Collection Description Frequency Namespace http://purl.org/cld/freq/
Type of Term	Vocabulary Term
Label	Continuous
Definition	The event repeats without interruption.
Comments	
Is Member Of	Collection Description Frequency Vocabulary http://purl.org/cld/terms/Frequency
See Also	MARC 21 Concise Holdings: Caption and Pattern Fields (853-855) http://www.loc.gov/marc/holdings/echdcapt.html

Irregular [freq:irregular]

Identifier	http://purl.org/cld/freq/completelyIrregular
Qualified Name	freq:irregular

Defined By	Collection Description Frequency Namespace http://purl.org/cld/freq/
Type of Term	Vocabulary Term
Label	Irregular
Definition	The event occurs at uneven intervals.
Comments	
Is Member Of	Collection Description Frequency Vocabulary http://purl.org/cld/terms/Frequency
See Also	MARC 21 Concise Holdings: Caption and Pattern Fields (853-855) http://www.loc.gov/marc/holdings/echdcapt.html

Changes made in this version

- Changed name of DC Collection Description Application Profile to DC Collections Application Profile



Metadata associated with this resource: <http://dublincore.org/groups/collections/frequency/2006-08-24/index.shtml.rdf>

[Copyright](#) © 1995-2007 [DCMI](#) All Rights Reserved. DCMI [liability](#), [trademark/service mark](#), [document use](#) and [software licensing](#) rules apply. Your interactions with this site are in accordance with our [privacy](#) statements. Please feel free to [contact us](#) for any questions, comments or media inquiries.

DCMI and the DCMI Web site are hosted by [OCLC Research](#).

Copyright © 1995-2007 DCMI. All Rights Reserved.